

METRONET OATS STREET LEVEL CROSSING

FLORA AND VEGETATION SURVEY

Prepared for: Public Transport Authority

Report Date: 31 January 2019

Version: 2

Report No. 2018-408

The logo for PGV Environmental is located in the bottom right corner of the page. It features the letters 'PGV' in a large, bold, white sans-serif font. Below 'PGV', the word 'ENVIRONMENTAL' is written in a smaller, white, all-caps sans-serif font. The background of the logo area is a vibrant orange with a subtle pattern of fine, white, curved lines that create a sense of movement and depth.

PGV
ENVIRONMENTAL

CONTENTS

Contents i

List of Attachments ii

1 INTRODUCTION 1

 1.1 Background..... 1

 1.2 Site Location 1

 1.3 Objectives 1

2 EXISTING ENVIRONMENT 2

 2.1 Land Use 2

 2.2 Topography 2

 2.3 Geology and Soils 3

 2.4 Hydrology 3

3 METHODOLOGY..... 4

 3.1 Scope of Works..... 4

 3.2 Database Searches 4

 3.3 Site Survey 4

 3.4 Survey Conditions..... 4

4 RESULTS..... 6

 4.1 Flora Database Searches 6

 4.2 Flora..... 10

 4.3 Vegetation 11

 4.3.1 Vegetation Types..... 11

 4.3.2 Vegetation Condition 13

 4.4 Conservation Significance of Flora and Vegetation 13

 4.4.1 Flora..... 13

 4.4.2 Vegetation 13

5 SUMMARY AND CONCLUSIONS..... 14

6 REFERENCES 15

LIST OF ATTACHMENTS

Tables

- Table 1: Statement of Botanical Survey Conditions
- Table 2: Conservation Significant Flora likely to occur within 5km of the Site
- Table 3: Preferred habitat of Identified Conservation Significant Flora
- Table 4: Trees and Shrubs Recorded in the Survey Area
- Table 5: Vegetation Condition Rating Scale

Plates

- Plate 1: Historical Aerial Photography from 1953 (Landgate, 2018)

Figures

- Figure 1: Site Location
- Figure 2: Site Boundary
- Figure 3: Vegetation Description Locations
- Figure 4: Vegetation Type
- Figure 5: Vegetation Condition

Appendices

- Appendix 1: Nature Map Report
- Appendix 2: Protected Matters Database Search Tool Report
- Appendix 3: Conservation Codes
- Appendix 4: Field Data

1 INTRODUCTION

1.1 Background

The Public Transport Authority (PTA) is currently seeking to implement parts of METRONET which is the State Government's long-term plan for public transport. As part of the plan the level crossing of the railway across Oats Street is proposed to be removed.

1.2 Site Location

The Oats Street Level Crossing (hereafter referred to as 'the site') is located in Carlisle in the Town of Victoria Park, approximately 7km south-east of the Perth Central Business District (Figure 1). The site is 25.86ha in size and contains part of the existing railway from Miller Street to Leach Highway to the east (Figure 2). The site is mostly bounded by Rutland Avenue and Banks Street. The boundary also extends partway along:

- Mint Street;
- Archer Street;
- Oats Street;
- Millford Street; and
- Cohn Street (Figure 2).

1.3 Objectives

The objectives of the flora and fauna surveys commissioned by PTA are:

- *Assess the biological values of each of the proposed projects to inform the environmental impact assessment process and support broader environmental approvals applications.*
- *Identify biological values of conservation significance for each of the proposed projects to minimise and/or manage potential environmental impacts.*

This report provides the flora and vegetation components of the biological values assessment.

2 EXISTING ENVIRONMENT

2.1 Land Use

Examination of historical aerial photography shows that the site was cleared in 1953 (Plate 1).

Plate 1: Historical Aerial Photography from 1953 (Landgate, 2018)



There are no areas that contain native vegetation. The site contains some scattered trees.

2.2 Topography

The site is gently undulating and varies from approximately 14.2m to 15.3m Australian Height Datum (AHD) (DWER, 2018).

2.3 Geology and Soils

The western part of the site is mapped in the Bassendean System and consists of very low relief, leached, grey siliceous Pleistocene sand dunes, intervening sandy and clayey swamps and gently undulating plains (Bolland, 1998). These soils are very leached, infertile and mildly acidic (DPIRD, 2017). A small area in the eastern part of the site is located on the Pinjarra Plain system which consists of a broad low relief plain west of the foothills, comprising predominantly Pleistocene fluvial sediments and some Holocene alluvium associated with major current drainage systems. The major soils are naturally poorly drained and many swamps occur (DPIRD, 2018).

The soil phases mapped on the site are:

- EnvGeol S8 Phase (212Bs_S8) consists of sand that is very light grey at the surface, yellow at depth, fine to medium-grained, sub-rounded quartz, moderately well sorted of eolian origin; and
- Pinjarra Phase S10 (213Pj_S10) which is described as very gently undulating plain with imperfectly drained mottled yellow duplex soils with sand to sandy loam topsoil (DPIRD, 2018).

2.4 Hydrology

Groundwater under the site is between approximately 8mAHD to 9mAHD (DWER, 2018), which is between 5.7m and 8.5m below ground level. Groundwater generally flows to the south-west (DWER, 2018). There are no wetlands or surface water features on the site (National Map, 2018).

3 METHODOLOGY

3.1 Scope of Works

A Detailed Flora and Vegetation Survey was undertaken in accordance with EPA Technical Guidance *Flora and Vegetation Surveys for Environmental Impact Assessment* (EPA, 2016). The survey included the following:

- Desktop search and review of Parks and Wildlife Service's (PaWS) (as part of the Department of Biodiversity, Conservation and Attractions (DBCA)) Naturemap database, the Department of the Environment and Energy's (DoEE) Protected Matters Search Tool and previous survey reports;
- Examination of recent aerial photography and contour maps to provisionally identify vegetation types and condition;
- Field survey using quadrats and/or relevés in any areas of native vegetation to record native and introduced species as well as a thorough site walkover;
- Field survey to search for Threatened and Priority species;
- Recording of any significant plant species using a hand-held GPS;
- Description and mapping of vegetation types and vegetation condition;
- Recording of any weed species listed as Declared Pests under S22 of the BAM Act or as Weeds of National Significance were recorded on the site; and
- Compilation of a flora list.

3.2 Database Searches

Database searches using Naturemap (PaWS, 2018) and the Protected Matters Search Tool (DoEE, 2018) were undertaken for a 5km radius around the central point of the site prior to the site survey. Other public information was also researched for the site to determine any additional studies that had been completed on or near the site.

3.3 Site Survey

A flora and vegetation survey of the site was conducted by Dr Paul van der Moezel on 12 and 23 October 2018. The whole site was walked to record the vegetation types and native species in the survey area. Access was not needed within the fenced portion of the rail reserve as it did not contain any intact native vegetation.

No quadrats or relevés were sampled as the whole survey area did not contain any native vegetation in Good condition or better.

3.4 Survey Conditions

The conditions that the survey was undertaken in are presented in Table 1 in order to assess the adequacy of the survey. In summary, there were no constraints to the survey.

Table 1: Statement of Botanical Survey Conditions

Issue	Constraints (Y/N)*	Comment
Competency/experience of the consultant conducting the survey	No	Dr Paul van der Moezel has extensive botanical survey experience in the Perth Metropolitan Region.
Proportion of the flora identified^	No	The timing of the survey in October was optimal to record most of the native species.
Sources of information (historic/recent or new data)	No	The flora in the Perth Metropolitan Region is well documented.
Proportion of the task achieved and further work that may need to be undertaken	No	No follow-up survey required as no Threatened Flora expected to occur in other seasons.
Timing/weather/season/cycle	No	The spring survey was optimal for most flora species. 2018 was a good year for ephemeral species, including orchids.
Disturbances (Fire)	No	The fire age of the vegetation was greater than 5 years.
Intensity of survey (e.g. In retrospect was the intensity adequate)	No	The small site and ease of access made for a full coverage. Access was not required within the rail reserve.
Completeness (e.g. was relevant area fully surveyed)	No	
Resources (e.g. degree of expertise available for plant identification)	No	Experienced botanist undertook plant identifications on site.
Remoteness and/or access problems	No	Easily accessible site in the Perth Metropolitan Region.
Availability of contextual (e.g. bioregional) information for the study area.	No	Perth's Bush Forever

*Constraints have been rated as Significant, Moderate or No constraints

^Fungi and nonvascular flora (e.g. algae, mosses and liverworts) were not specifically surveyed for during the survey.

4 RESULTS

4.1 Flora Database Searches

The conservation significant flora identified in the searches of Naturemap database (Appendix 1) and the Protected Matters Search Tool (Appendix 2) as occurring within 5km of the site are listed in Table 2. Table 3 lists the preferred habitat of these species.

Table 2: Conservation Significant Flora likely to occur within 5km of the Site

Scientific Name	Common Name	Conservation Status (WA)	Status under EPBC Act
<i>Caladenia huegelii</i>	King Spider-orchid, Grand Spider-orchid, Rusty Spider-orchid	Schedule 1	Endangered
<i>Drakaea elastica</i>	Glossy-leafed Hammer Orchid	Schedule 1	Endangered
<i>Eucalyptus x balanites</i>	Cadda Road Mallee	Schedule 1	Endangered
<i>Grevillea curviloba</i> subsp. <i>curviloba</i>	Narrow curved-leaf Grevillea	Schedule 1	Endangered
<i>Grevillea thelemanniana</i> subsp. <i>thelemanniana</i>	Spider Net Grevillea	Schedule 1	Critically Endangered
<i>Synaphea</i> sp. Fairbridge Farm (D Papenfus 696)	Selena's Synaphea	Schedule 1	Critically Endangered
<i>Thelymitra dedmaniarum</i> (<i>Thelymitra manginii</i>)	Cinnamon Sun-orchid	Schedule 1	Endangered
<i>Diuris micrantha</i>	Dwarf Bee-orchid	Schedule 2	Vulnerable
<i>Diuris purdiei</i>	Purdie's Donkey-orchid	Schedule 2	Endangered
<i>Eremophila glabra</i> subsp. <i>chlorella</i>		Schedule 2	Endangered
<i>Lepidosperma rostratum</i>	Beaked Lepidosperma	Schedule 2	Endangered
<i>Macarthuria keigheryi</i>	Keighery's Macarthuria	Schedule 2	Endangered
<i>Thelymitra stellata</i>	Star Sun-orchid	Schedule 2	Endangered
<i>Andersonia gracilis</i>	Slender Andersonia	Schedule 3	Endangered
<i>Anigozanthos viridis</i> subsp. <i>terraspectans</i>	Dwarf Green Kangaroo Paw	Schedule 3	Vulnerable
<i>Conospermum undulatum</i>	Wavy-leafed Smokebush	Schedule 3	Vulnerable
<i>Drakaea micrantha</i>	Dwarf Hammer-orchid	Schedule 3	Vulnerable
<i>Eleocharis keigheryi</i>	Keighery's Eleocharis	Schedule 3	Vulnerable
<i>Haloragis scoparia</i>		Priority 1	
<i>Ptilotus sericostachyus</i> subsp. <i>roseus</i>		Priority 1	
<i>Johnsonia pubescens</i> subsp. <i>cygnorum</i>		Priority 2	
<i>Melaleuca viminalis</i>		Priority 2	
<i>Stylidium aceratum</i>		Priority 2	

Scientific Name	Common Name	Conservation Status (WA)	Status under EPBC Act
<i>Thelymitra variegata</i>	Queen of Sheba	Priority 2	
<i>Amanita preissii</i>	Cinnamon-ring Lepidella	Priority 3	
<i>Angianthus micropodioides</i>		Priority 3	
<i>Byblis gigantea</i>	Rainbow Plant	Priority 3	
<i>Conostylis bracteata</i>		Priority 3	
<i>Cyathochaeta teretifolia</i>		Priority 3	
<i>Dampiera triloba</i>		Priority 3	
<i>Eryngium pinnatifidum</i> subsp. <i>Palustre</i> (G.J. Keighery 13459)		Priority 3	
<i>Eryngium</i> sp. <i>Subdecumbens</i> (G.J. Keighery 5390)		Priority 3	
<i>Haemodorum loratum</i>		Priority 3	
<i>Hibbertia spicata</i> subsp. <i>leptotheca</i>		Priority 3	
<i>Isopogon drummondii</i>		Priority 3	
<i>Schoenus benthamii</i>		Priority 3	
<i>Schoenus capillifolius</i>		Priority 3	
<i>Schoenus pennisetis</i>		Priority 3	
<i>Schoenus</i> sp. <i>Warooka</i> (G.J. Keighery 12235)		Priority 3	
<i>Stylidium paludicola</i>		Priority 3	
<i>Aponogeton hexatepalus</i>	Stalked Water Ribbons	Priority 4	
<i>Boronia tenuis</i>		Priority 4	
<i>Dodonaea hackettiana</i>		Priority 4	
<i>Drosera occidentalis</i> subsp. <i>occidentalis</i>		Priority 4	
<i>Hydrocotyle lemnoides</i>		Priority 4	
<i>Jacksonia sericea</i>	Waldjumi	Priority 4	
<i>Schoenus natans</i>	Floating Bog-rush	Priority 4	
<i>Verticordia lindleyi</i> subsp. <i>lindleyi</i>		Priority 4	

Conservation Codes are shown in Appendix 3

Table 3: Preferred habitat of Identified Conservation Significant Flora

Scientific Name	Common Name	Habitat*
<i>Caladenia huegelii</i>	King Spider-orchid, Grand Spider-orchid, Rusty Spider-orchid	The Grand Spider-orchid prefers sand or clay loam. This species generally does not survive in disturbed areas.
<i>Drakaea elastica</i>	Glossy-leafed Hammer Orchid	The Glossy-leafed Hammer Orchid prefers low-lying situations adjoining winter-wet swamps. This species does not survive in disturbed areas.
<i>Eucalyptus x balanites</i>	Cadda Road Mallee	The Cadda Road Mallee prefers sandy soils with lateritic gravel.
<i>Grevillea curviloba subsp. curviloba</i>	Narrow curved-leaf Grevillea	Narrow curved-leaf Grevillea occurs in grey sand. Winter-wet heath. There are 17 known populations in an area between Muchea and Badgingarra (Phillimore and English, 2000).
<i>Grevillea thelemanniana subsp. thelemanniana</i>	Spider Net Grevillea	Spider Net Grevillea is recorded from the edge of a seasonal clay based open depression, on slightly deeper sandier soils. Moist grey-brown sandy loam over clay (Western Australian Herbarium, 2012).
<i>Synaphea</i> sp. Fairbridge Farm (D Papenfus 696)	Selena's Synaphea	Selena's Synaphea occurs in sandy with lateritic pebbles near winter-wet flats, in low woodland with weedy grasses.
<i>Thelymitra dedmaniarum (Thelymitra manginii)</i>	Cinnamon Sun-orchid	Cinnamon sun orchid is known from only two locations in the Gidgegannup area. It is confined to open wandoo woodland on red-brown sandy loam associated with dolerite and granite outcropping.
<i>Diuris micrantha</i>	Dwarf Bee-orchid	The Dwarf Bee-orchid is usually found on cleared firebreaks or open sandy patches that have been disturbed in Jarrah Banksia woodland or thickets of Spearwood (<i>Kunzea ericifolia/glabrescens</i>) (Williams <i>et al.</i> , 2001).
<i>Diuris purdiei</i>	Purdie's Donkey-orchid	Purdie's Donkey Orchid occurs in grey-black sand in moist winter-wet swamps.
<i>Eremophila glabra subsp. chlorella</i>		<i>Eremophila glabra</i> subsp. <i>chlorella</i> occurs in sandy clay in winter-wet depressions.
<i>Lepidosperma rostratum</i>	Beaked Lepidosperma	Beaked Lepidosperma is found in peaty sand, clay.
<i>Macarthuria keigheryi</i>	Keighery's Macarthuria	Keighery's Macarthuria prefers white or grey sand.
<i>Thelymitra stellata</i>	Star Sun-orchid	The Star Sun-orchid prefers sand, gravel or lateritic loam.
<i>Andersonia gracilis</i>	Slender Andersonia	Slender Andersonia occurs in white/grey sand, sandy clay, gravelly loam in winter-wet areas, near swamps.
<i>Anigozanthos viridis subsp. terraspectans</i>	Dwarf Green Kangaroo Paw	The Dwarf Green Kangaroo Paw occurs on grey sand, clay loam in winter-wet depressions.

Scientific Name	Common Name	Habitat*
<i>Conospermum undulatum</i>	Wavy-leaved Smokebush	Wavy-leaved Smokebush prefers grey or yellow-orange clayey sand.
<i>Drakaea micrantha</i>	Dwarf Hammer-orchid	Dwarf Hammer-orchid occurs in grey sands over dark, grey to blackish, sandy clay-loam substrates in winter wet depressions or swamps.
<i>Eleocharis keigheryi</i>	Keighery's Eleocharis	Keighery's Eleocharis occurs in clay, sandy loam and is emergent in freshwater: creeks, claypans.
<i>Haloragis scoparia</i>		<i>Haloragis scoparia</i> was recorded from an old lake bed, winter wet. Black calcareous clay over limestone (Western Australian Herbarium, 1994).
<i>Ptilotus sericostachyus</i> subsp. <i>roseus</i>		<i>Ptilotus sericostachyus</i> subsp. <i>roseus</i> was last recorded in 1906 (David and Tauss, 2011) in valleys (National Herbarium of Victoria, 1877).
<i>Johnsonia pubescens</i> subsp. <i>cygnorum</i>		<i>Johnsonia pubescens</i> subsp. <i>cygnorum</i> occurs on grey-white-yellow sand on flats on seasonally-wet sites.
<i>Melaleuca viminalis</i>		<i>Melaleuca viminalis</i> is recorded from stony riverbed in rapids with sandstone rocks overlying volcanics, in the creekline of sandstone gorges in sand among rocks, and around a pool below a waterfall (Craven, Lepschi and Cowley, 2010).
<i>Stylidium aceratum</i>		<i>Stylidium aceratum</i> occurs in sandy soils in swamp heathland.
<i>Thelymitra variegata</i>	Queen of Sheba	<i>Stylidium aceratum</i> grows in sandy clay, sand, laterite.
<i>Amanita preissii</i>	Cinnamon-ring Lepidella	Cinnamon-ring Lepidella is found under shrubs and Eucalyptus in West Australia.
<i>Angianthus micropodioides</i>		<i>Angianthus micropodioides</i> occurs in saline sandy soils on river edges, saline depressions, claypans.
<i>Byblis gigantea</i>	Rainbow Plant	The Rainbow Plant occurs in sandy-peat swamps in seasonally wet areas.
<i>Conostylis bracteata</i>		<i>Conostylis bracteata</i> occurs in sand, limestone on consolidated sand dunes.
<i>Cyathochaeta teretifolia</i>		<i>Cyathochaeta teretifolia</i> grows in grey sand, sandy clay in swamps, creek edges.
<i>Dampiera triloba</i>		<i>Dampiera triloba</i> grows in loamy sand (Australian National Herbarium, 2009).
<i>Eryngium pinnatifidum</i> subsp. <i>Palustre</i> (G.J. Keighery 13459)		<i>Eryngium pinnatifidum</i> subsp. <i>Palustre</i> is recorded from a winter wet claypan, water to 20 cm deep. Grey-brown clay (Western Australian Herbarium, 1989).
<i>Eryngium</i> sp. <i>Subdecumbens</i> (G.J. Keighery 5390)		<i>Eryngium</i> sp. <i>Subdecumbens</i> grows in gray, grey sand on seasonally wet flats, claypans, swamps.

Scientific Name	Common Name	Habitat*
<i>Haemodorum loratum</i>		<i>Haemodorum loratum</i> prefers grey or yellow sand, gravel.
<i>Hibbertia spicata</i> subsp. <i>leptotheca</i>		<i>Hibbertia spicata</i> subsp. <i>leptotheca</i> grows near-coastal limestone ridges, outcrops and cliffs.
<i>Isopogon drummondii</i>		<i>Isopogon drummondii</i> occurs in white, grey or yellow sand, often over laterite.
<i>Schoenus benthamii</i>		<i>Schoenus benthamii</i> prefers white, grey sand, sandy clay in winter-wet flats, swamps.
<i>Schoenus capillifolius</i>		<i>Schoenus capillifolius</i> grows in brown mud on claypans.
<i>Schoenus pennisetis</i>		<i>Schoenus pennisetis</i> prefers grey or peaty sand, sandy clay in swamps, winter-wet depressions.
<i>Schoenus</i> sp. Waroona (G.J. Keighery 12235)		<i>Schoenus</i> sp. Waroona occurs in clay or sandy clay on winter-wet flats.
<i>Stylidium paludicola</i>		<i>Stylidium paludicola</i> prefers peaty sand over clay in winter wet habitats in Marri and Melaleuca woodland, Melaleuca shrubland.
<i>Aponogeton hexatepalus</i>	Stalked Water Ribbons	Stalked Water Ribbons grow in freshwater: ponds, rivers, claypans.
<i>Boronia tenuis</i>		<i>Boronia tenuis</i> prefers laterite, stony soils, granite.
<i>Dodoniaea hackettiana</i>	Hackett's Hopbush	Hackett's Hopbush occurs in sand with outcropping limestone.
<i>Drosera occidentalis</i> subsp. <i>occidentalis</i>		<i>Drosera occidentalis</i> subsp. <i>occidentalis</i> occurs in sandy and clayey soils in swamps and wet depressions.
<i>Hydrocotyle lemnoides</i>		<i>Hydrocotyle lemnoides</i> occurs in swamps.
<i>Jacksonia sericea</i>	Waldjumi	Waldjumi grows in calcareous and sandy soils.
<i>Schoenus natans</i>	Floating Bog-rush	Floating Bog-rush occurs in winter-wet depressions.
<i>Verticordia lindleyi</i> subsp. <i>lindleyi</i>		<i>Verticordia lindleyi</i> subsp. <i>lindleyi</i> prefers sand, sandy clay in winter-wet depressions.

* sourced from Florabase, PaWS database searches and SPRAT (DoEE, 2018) unless otherwise denoted

4.2 Flora

The site did not contain any intact native vegetation in Good condition or better. One small stand of Geraldton Wax within the rail reserve also contained a few native plants as indicated in Table 4. Several Jarrah and Marri trees were also located within the rail reserve at Location 2.

No weed species listed as Declared Pests under S22 of the BAM Act or as Weeds of National Significance were recorded on the site.

A list of all the trees and shrubs recorded in the survey area is provided in Table 4. Some species are locally native species but have all been planted rather than being remnant plants.

Table 4: Trees and Shrubs Recorded in the Survey Area

Scientific Name	Common Name	Native Site	to Rail Reserve	Road Reserve
<i>Acacia saligna</i>	Orange Wattle	-	-	+
<i>Adenanthos cygnorum</i>	Woolly Bush	+	+	-
<i>Agonis flexuosa</i>	WA Peppermint	-	+	+
<i>Araucaria heterophylla</i>	Norfolk Island Pine	-	-	+
<i>Bauhinia purpurea</i>	Purple Bauhinia	-	-	+
<i>Bossiaea eriocarpa</i>	Common Brown Pea	+	+	
<i>Brachychiton populneus</i>	Kurrajong	-	-	+
<i>Callistemon viminalis</i>	Bottlebrush	-	-	+
<i>Chamelaucium uncinatum</i>	Geraldton Wax	-	+	+
<i>Corymbia calophylla</i>	Marri	+	+	-
<i>Corymbia citriodora</i>	Lemon-scented Gum	-	-	+
<i>Corymbia ficifolia</i>	Red Flowering Gum	-	-	+
<i>Eucalyptus caesia</i>	Silver Princess	-	-	+
<i>Eucalyptus camaldulensis</i>	River Red Gum	-	-	+
<i>Eucalyptus erythrocorys</i>	Illyarrie	-	-	+
<i>Eucalyptus marginata</i>	Jarrah	+	+	-
<i>Grevillea olivacea</i>	Olive Grevillea	-	-	+
<i>Jacksonia furcellata</i>	Grey Stinkwood	+	+	
<i>Leptospermum laevigatum</i>	Victorian Tea Tree	-	+	+
<i>Macrozamia riedlei</i>	Zamia Palm	+	+	-
<i>Melaleuca nesophila</i>	Mindiyed	-	-	+
<i>Melaleuca preissiana</i>	Moonah Paperbark	-	-	+
<i>Melaleuca quinquenervia</i>	Broad Leaved Paperbark	-	-	+
<i>Jacaranda mimosifolia</i>	Jacaranda	-	-	+
<i>Olea europaea</i>	Olive	-	-	+
<i>Scholtzia involucrata</i>	Spike Scholtzia	+	+	-
<i>Stirlingia latifolia</i>	Blueboy	+	+	-
<i>Thysanotus patersonii</i>		+	+	-
<i>Verticordia densiflora</i>	Compacted Featherflower	+	+	-
<i>Xanthorrhoea preissii</i>	Balga	+	+	+

4.3 Vegetation

4.3.1 Vegetation Types

No intact native vegetation was recorded in the survey area (Figure 4).

A broad description of the vegetation recorded on the site follows. Photographs of areas described are provided in Appendix 4 and the locations shown on Figure 3.

Location 1 – Geraldton Wax and Woolly Bush shrubs occur within the rail reserve.

Some *Melaleuca quinquenervia* trees in the road reserve.

Location 2 – some young Jarrah and Marri trees in weedy area in rail reserve as well as Geraldton Wax, WA Peppermint, *Adenanthos cygnorum* (Woolly Bush) and *Jacksonia furcellata*.

Road reserve contains Olive trees, Illyarrie, Red Flowering Gum, *Melaleuca quinquenervia*.

Location 3 – Small area of Geraldton Wax and WA Peppermint with several native species as listed in Table 2.

Road reserve contains Olive trees, Geraldton Wax and *Xanthorrhoea preissii*.

Location 4 – Olive and *Melaleuca quinquenervia* trees in the road reserve.

Location 5 – Few WA Peppermints, Geraldton Wax and *Xanthorrhoea preissii* in rail reserve.

Norfolk Island Pine trees, WA Peppermint, Bottlebrush and *Melaleuca nesophila* in road reserve.

Location 6 – WA Peppermint and *Xanthorrhoea preissii* in rail reserve.

Norfolk Island Pine, Bottlebrush and *Melaleuca nesophila* in road reserve.

Location 7 – One large River Red Gum and one Moonah Paperbark in Cohn Street road reserve.

Location 8 – WA Peppermint, Geraldton Wax and *Xanthorrhoea preissii* in rail reserve.

Norfolk Island Pine trees, WA Peppermint, Bottlebrush and *Melaleuca nesophila* in road reserve.

Location 9 – Kurrajong in road reserve.

Location 10 – Jacarandas next to carpark.

Location 11 – Two Red Flowering Gums next to carpark.

Location 12 – WA Peppermint, some Geraldton Wax and *Xanthorrhoea preissii* in rail reserve.

Red Flowering Gum in road reserve.

Location 13 – WA Peppermint and Geraldton Wax in rail reserve.

Olive Grevillea, Silver Princess, Red Flowering Gum, *Melaleuca quinquenervia* and Bottlebrush in road reserve.

Location 14 – WA Peppermint and Bottlebrush both sides of Dane Street road reserve.

Location 15 – Norfolk Island Pine, *Melaleuca quinquenervia* and Bottlebrush in road reserve

Location 16 – Purple Bauhinia both sides of Lion Street road verge.

Location 17 – Geraldton Wax, WA Peppermint and Victorian Teatree in rail reserve

Olive Grevillea, Silver Princess, Red Flowering Gum, *Melaleuca quinquenervia* and Bottlebrush in road reserve

Location 18 – *Melaleuca quinquenervia* next to carpark.

4.3.2 Vegetation Condition

The condition of the site was assessed according to the system of Keighery as described in Bush Forever (Government of Western Australia, 2000) (Table 5).

Table 5: Vegetation Condition Rating Scale

Condition	Description
Pristine	Pristine or nearly so, no obvious signs of disturbance.
Excellent	Vegetation structure intact, disturbance affecting individual species and weeds are non-aggressive species.
Very Good	Vegetation structure altered, obvious signs of disturbance. For example, disturbance to vegetation structure caused by repeated fires, the presence of some more aggressive weeds, dieback, logging and grazing.
Good	Vegetation structure significantly altered by very obvious signs of multiple disturbance. Retains basic vegetation structure or ability to regenerate to it. For example, disturbance to vegetation structure caused by very frequent fires, the presence of some very aggressive weeds at high density, partial clearing, dieback and grazing.
Degraded	Basic vegetation structure severely impacted by disturbance. Scope for regeneration but not to a state approaching good condition without intensive management. For example, disturbance to vegetation structure caused by very frequent fires, the presence of very aggressive weeds, partial clearing, dieback and grazing.
Completely Degraded	The structure of the vegetation is no longer intact and the area is completely or almost completely without native species. These are often described as 'parkland cleared' with the flora comprising weed or crop species with isolated native trees or shrubs.

The whole site was rated as Completely Degraded (Figure 5).

4.4 Conservation Significance of Flora and Vegetation

4.4.1 Flora

No Threatened or Priority flora species were recorded on the site.

4.4.2 Vegetation

No native vegetation of conservation significance was recorded on the site. Therefore, no Threatened or Priority Ecological Communities occur on the site.

5 SUMMARY AND CONCLUSIONS

The Flora and Vegetation survey resulted in the following findings:

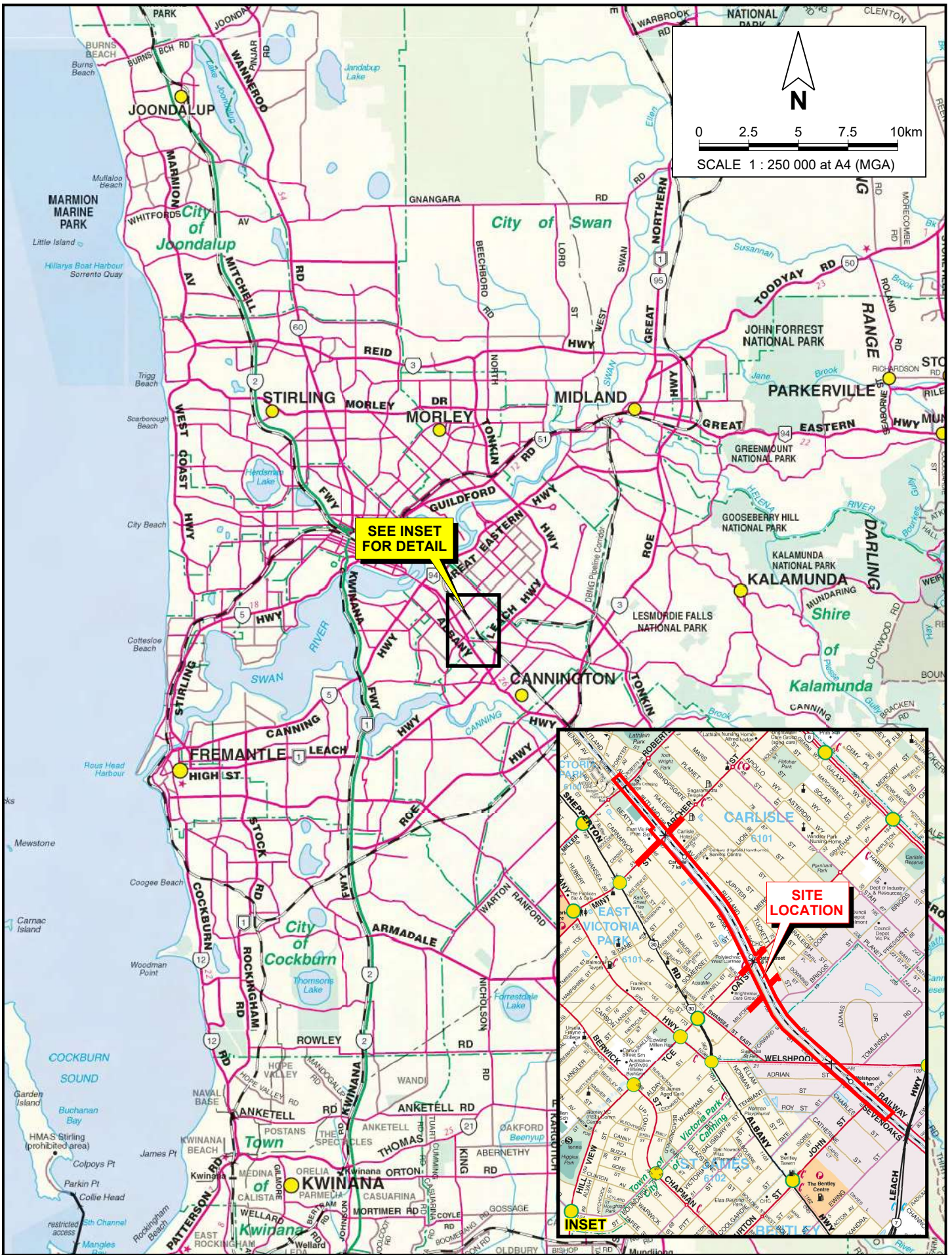
- No intact areas of native vegetation were recorded on the site;
- Some vegetation was recorded within the rail reserve. The vegetation mostly consisted of non-local Geraldton Wax and WA Peppermint with some Balga (*Xanthorrhoea preissii*) shrubs present. A small area containing some native plants among a dense stand of Geraldton Wax and WA Peppermint was recorded at one location within the rail reserve;
- The vegetation in the road reserves and carparks is all planted non-local native and exotic trees and shrubs;
- The condition of all vegetation recorded was rated as Completely Degraded;
- No Threatened (Declared Rare) or Priority flora species were recorded on the site;
- No Threatened or Priority Ecological Communities were recorded on the site; and
- No weed species listed as Declared Pests under S22 of the BAM Act or as Weeds of National Significance were recorded on the site.

6 REFERENCES

- Amanitaceae Org (2015) Species Profile *Amanita preissii* Accessed August 2015 <http://www.amanitaceae.org/?Amanita+priessii> Australia
- Australian National Herbarium (2009) Atlas of Living Australia; Australia's Virtual Herbarium Record for *Dampiera trilobai* <http://biocache.ala.org.au/occurrences/d94999ab-255f-49c4-b567-b35c4a5f3860> Accessed March 2017 Perth Western Australia
- Craven, L.A., Lepschi, B.J. and Cowley, K.J. (2010) *Melaleuca* (Myrtaceae) of Western Australia: five new species, three new combinations, one new name and a new state record. *Nuytsia* 20: 27-36 Perth, Western Australia
- Davis, R.W. and Tauss, C. (2011) A new and rare species of *Ptilotus* (Amaranthaceae) from a suburban wetland of the eastern Swan Coastal Plain, Western Australia. *Nuytsia* 21(3): 97–102 Perth, Western Australia
- Department of Environment and Conservation (DEC) (2012) Cinnamon Sun Orchid Endangered Flora of Western Australia Fact Sheet. https://www.dpaw.wa.gov.au/images/documents/plants-animals/threatened-species/flora_posters/ThelymitraDedmaniarum2009135.pdf Accessed June 2016 Perth Western Australia
- Department of Primary Industries and Regional Development (DPIRD) (2018) Natural Resource Information. Accessed July, 2018 <http://maps.agric.wa.gov.au/nrm-info/> Government of Western Australia, Perth.
- Department of the Environment and Energy (DoEE) (2018) Protected Matters Search Tool Accessed September 2018 <http://www.environment.gov.au/webgis-framework/apps/pmst/pmst.jsf> Australia
- Department of Water and Environmental Regulation (DWER) (2018) *Perth Groundwater Map*. Accessed October 2018 <https://maps.water.wa.gov.au/#/webmap/gwm> Government of Western Australia, Perth.
- Environmental Protection Authority (EPA) (2016) *Technical Guidance: Flora and Vegetation Surveys for Environmental Impact Assessment* Perth Western Australia
- Government of Western Australia (2000) *Bush Forever - Keeping the Bush in the City. Volume 2: Directory of Bush Forever Sites*. Perth, Western Australia.
- Landgate (2018) Historical Aerial Photography Accessed October 2018 <https://www.landgate.wa.gov.au/bmvf/app/mapviewer/> Government of Western Australia, Perth.
- National Herbarium of Victoria (1877) Online record on Atlas of Living Australia <http://biocache.ala.org.au/occurrences/647b446a-c759-4a1e-a91a-cad2c00530f3> Accessed October 2015

- National Map (2018) Map-Based Access to Spatial Data from Australian Government Agencies <http://nationalmap.gov.au/#wa> Accessed October 2018 Government of Australia
- Parks and Wildlife Service (PaWS) (2018) Naturemap Accessed October 2018 <https://naturemap.dpaw.wa.gov.au/> Perth Western Australia
- Phillimore, R. and English, V. (2000) *Narrow curved-leaf Grevillea Grevillea curviloba subsp. incurva Interim Recovery Plan 2000-2003* Department of Conservation and Land Management Perth Western Australia
- Rye, B.L. (2013) A revision of the south-western Australian genus *Astartea* (Myrtaceae: Chamelaucieae) *Nuytsia* 23: 189–269 Perth Western Australia
- Western Australian Herbarium (1989) Online record on Atlas of Living Australia *Eryngium pinnatifidum* subsp. *Palustre* <http://biocache.ala.org.au/occurrences/579560ea-be88-440b-9ab0-e93999c5b08d> Accessed October 2015 Perth
- Western Australian Herbarium (1994) Atlas of Living Australia; Australia's Virtual Herbarium Record <http://biocache.ala.org.au/occurrences/12adab12-3e34-4d52-af20-418451703b5c> Accessed March 2016 Perth
- Western Australian Herbarium (2012) Atlas of Living Australia; Australia's Virtual Herbarium Record <http://biocache.ala.org.au/occurrences/6f0edc46-9268-4234-a28e-8aaa6c7f546d> Accessed March 2016 Perth
- Williams, K., Horan, A., Wood, S. and Webb, A (2001) *Declared rare and poorly known flora in the Central Forest Region, Western Australian Wildlife Management Program No. 33*, Western Australian Department of Conservation and Land Management. Perth, Western Australia

FIGURES



2018-408-01.dgn
 PINPOINT CARTOGRAPHICS (08) 9562 7136

Drawn: P. van der Moezel Job: 10331 Rpt: 2018-408	Date: 6 Nov 2018 Revision: A

Public Transport Authority
 FLORA AND VEGETATION SURVEY
 METRONET OATS STREET LEVEL CROSSING

SITE LOCATION

Figure 1



N

0 50 100 150 200 250m

SCALE 1 : 7 500 at A3 (MGA)

Legend

- - - Site Boundary
- Cadastral Boundary
- · · Easement Boundary

		Public Transport Authority FLORA AND VEGETATION SURVEY METRONET OATS STREET LEVEL CROSSING		Figure 2
Drawn: P. van der Moezel	Date: 6 Nov 2018	SITE BOUNDARY		
Job: 10331	Rpt: 2018-408	Revision: A		



N

0 50 100 150 200 250m

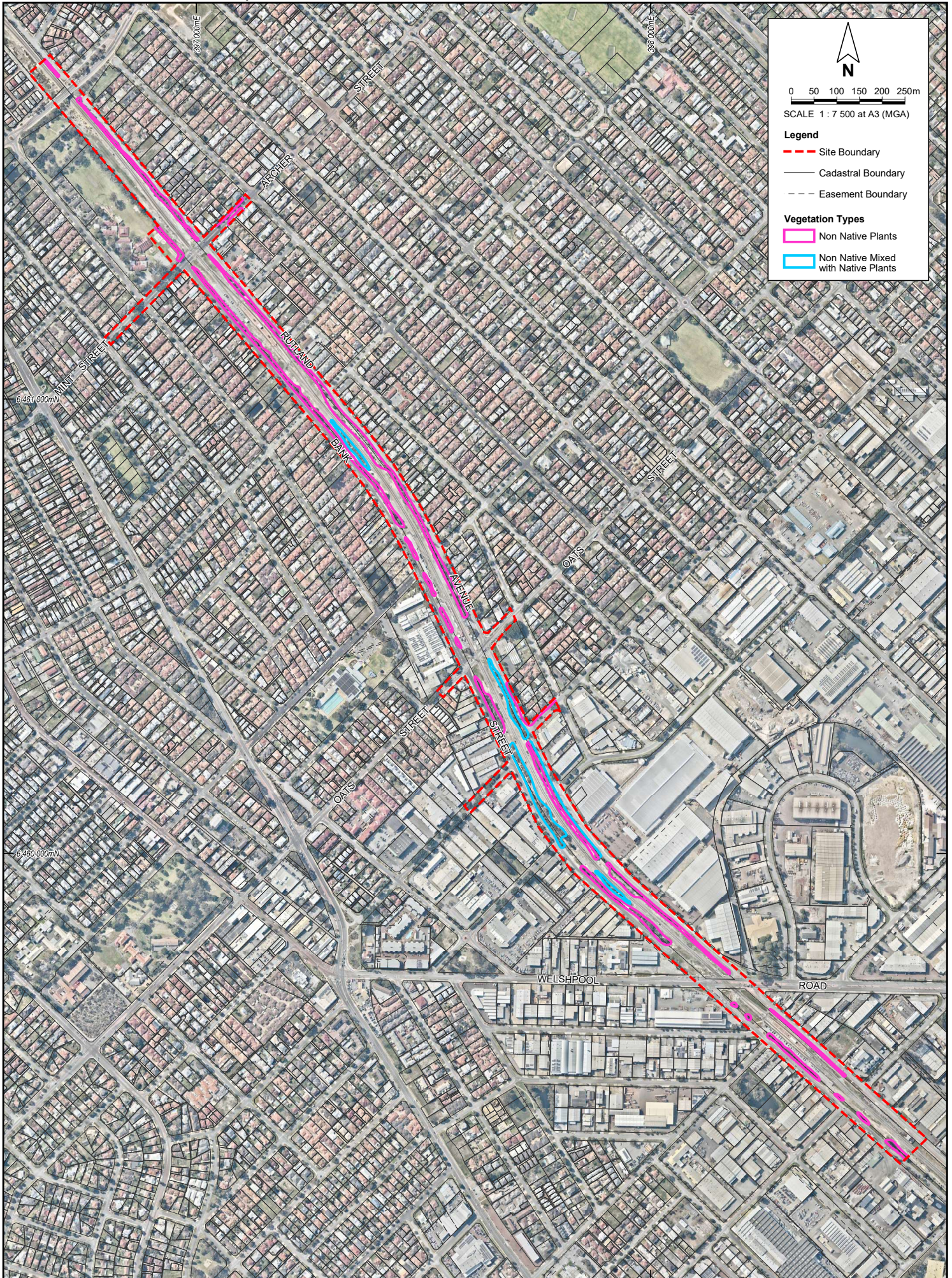
SCALE 1 : 7 500 at A3 (MGA)

Legend

- - - Site Boundary
- Cadastral Boundary
- Easement Boundary
- Vegetation Description Area

		Public Transport Authority FLORA AND VEGETATION SURVEY METRONET OATS STREET LEVEL CROSSING		Figure 3
Drawn: P. van der Moezel	Date: 6 Nov 2018	VEGETATION DESCRIPTION LOCATIONS		
Job: 10331 Rpt: 2018-408	Revision: A			

CADASTRAL SOURCE: Landgate, November 2018.
 AERIAL PHOTOGRAPH SOURCE: NearMap, flown September 2018.



N

0 50 100 150 200 250m

SCALE 1 : 7 500 at A3 (MGA)

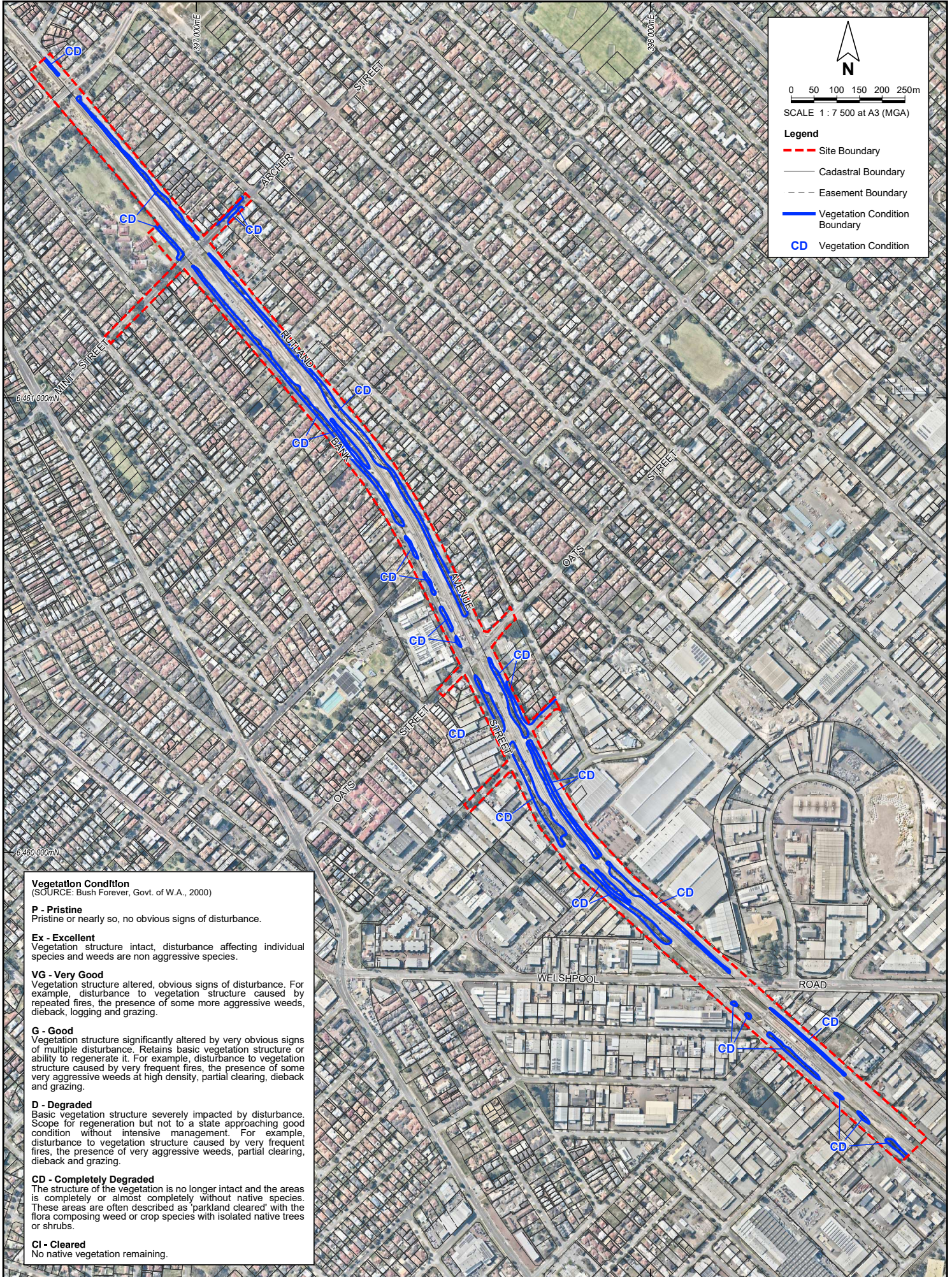
Legend

- - - Site Boundary
- Cadastral Boundary
- Easement Boundary

Vegetation Types

- Non Native Plants
- Non Native Mixed with Native Plants

CADASTRAL SOURCE: Landgate, November 2018.
 AERIAL PHOTOGRAPH SOURCE: NearMap, flown September 2018.



N

0 50 100 150 200 250m

SCALE 1 : 7 500 at A3 (MGA)

Legend

- - - Site Boundary
- Cadastral Boundary
- - - Easement Boundary
- Vegetation Condition Boundary
- CD Vegetation Condition

Vegetation Condition
(SOURCE: Bush Forever, Govt. of W.A., 2000)

P - Pristine
Pristine or nearly so, no obvious signs of disturbance.

Ex - Excellent
Vegetation structure intact, disturbance affecting individual species and weeds are non aggressive species.

VG - Very Good
Vegetation structure altered, obvious signs of disturbance. For example, disturbance to vegetation structure caused by repeated fires, the presence of some more aggressive weeds, dieback, logging and grazing.

G - Good
Vegetation structure significantly altered by very obvious signs of multiple disturbance. Retains basic vegetation structure or ability to regenerate it. For example, disturbance to vegetation structure caused by very frequent fires, the presence of some very aggressive weeds at high density, partial clearing, dieback and grazing.

D - Degraded
Basic vegetation structure severely impacted by disturbance. Scope for regeneration but not to a state approaching good condition without intensive management. For example, disturbance to vegetation structure caused by very frequent fires, the presence of very aggressive weeds, partial clearing, dieback and grazing.

CD - Completely Degraded
The structure of the vegetation is no longer intact and the areas is completely or almost completely without native species. These areas are often described as 'parkland cleared' with the flora composing weed or crop species with isolated native trees or shrubs.

CI - Cleared
No native vegetation remaining.

pgv ENVIRONMENTAL		Public Transport Authority FLORA AND VEGETATION SURVEY METRONET OATS STREET LEVEL CROSSING		Figure 5
Drawn: P. van der Mozeel	Date: 6 Nov 2018	VEGETATION CONDITION		
Job: 10331	Rpt: 2018-408	Revision: A		

APPENDIX 1

Naturemap Report

NatureMap Species Report

Created By Guest user on 01/11/2018

Current Names Only Yes

Core Datasets Only Yes

Method 'By Line'

Vertices 31° 58' 34" S, 115° 54' 23" E 31° 59' 52" S, 115° 55' 36" E

Group By Conservation Status

Conservation Status	Species	Records
Non-conservation taxon	1628	65602
Other specially protected fauna	3	24
Priority 1	2	2
Priority 2	3	3
Priority 3	20	83
Priority 4	12	436
Protected under international agreement	14	751
Rare or likely to become extinct	22	1808
TOTAL	1704	68709

Name ID	Species Name	Naturalised	Conservation Code	Endemic To Query Area
Rare or likely to become extinct				
1.	6309 <i>Andersonia gracilis</i>		T	
2.	24345 <i>Botaurus poiciloptilus</i> (Australasian Bittern)		T	
3.	1596 <i>Caladenia huegelii</i> (Grand Spider Orchid)		T	
4.	24784 <i>Calidris ferruginea</i> (Curlew Sandpiper)		T	
5.	24731 <i>Calyptorhynchus banksii</i> subsp. <i>naso</i> (Forest Red-tailed Black Cockatoo)		T	
6.	24733 <i>Calyptorhynchus baudinii</i> (Baudin's Cockatoo, White-tailed Long-billed Black Cockatoo)		T	
7.	24734 <i>Calyptorhynchus latirostris</i> (Carnaby's Cockatoo, White-tailed Short-billed Black Cockatoo)		T	
8.	48400 <i>Calyptorhynchus</i> sp. (white-tailed black cockatoo)		T	
9.	13999 <i>Conospermum undulatum</i>		T	
10.	24092 <i>Dasyurus geoffroi</i> (Chuditch, Western Quoll)		T	
11.	1637 <i>Diuris purdiei</i> (Purdie's Donkey Orchid)		T	
12.	17605 <i>Eleocharis keigheryi</i>		T	
13.	17150 <i>Eremophila glabra</i> subsp. <i>chlorella</i>		T	
14.	24473 <i>Falco hypoleucos</i> (Grey Falcon)		T	
15.	2107 <i>Grevillea thelemanniana</i> (Spider Net Grevillea)		T	
16.	33983 <i>Leioproctus douglasiellus</i> (a short-tongued bee)		T	
17.	17106 <i>Macarthuria keigheryi</i>		T	
18.	33984 <i>Neopasiphae simplicior</i> (a short-tongued bee)		T	
19.	24798 <i>Numenius madagascariensis</i> (Eastern Curlew)		T	
20.	25345 <i>Pseudemydura umbrina</i> (Western Swamp Tortoise, Western Swamp Turtle)		T	
21.	1033 <i>Tetralia australiensis</i>		T	
22.	34113 <i>Westralunio carteri</i> (Carter's Freshwater Mussel)		T	
Protected under international agreement				
23.	41323 <i>Actitis hypoleucos</i> (Common Sandpiper)		IA	
24.	24779 <i>Calidris acuminata</i> (Sharp-tailed Sandpiper)		IA	
25.	24786 <i>Calidris melanotos</i> (Pectoral Sandpiper)		IA	
26.	24788 <i>Calidris ruficollis</i> (Red-necked Stint)		IA	
27.	24789 <i>Calidris subminuta</i> (Long-toed Stint)		IA	
28.	48587 <i>Hydroprogne caspia</i> (Caspian Tern)		IA	
29.	24690 <i>Macronectes giganteus</i> (Southern Giant Petrel)		IA	
30.	48591 <i>Pandion cristatus</i> (Osprey, Eastern Osprey)		IA	
31.	24843 <i>Plegadis falcinellus</i> (Glossy Ibis)		IA	
32.	24383 <i>Pluvialis squatarola</i> (Grey Plover)		IA	
33.	24716 <i>Puffinus pacificus</i> (Wedge-tailed Shearwater)		IA	
34.	48597 <i>Thalasseus bergii</i> (Crested Tern)		IA	
35.	24806 <i>Tringa glareola</i> (Wood Sandpiper)		IA	
36.	24808 <i>Tringa nebularia</i> (Common Greenshank, greenshank)		IA	

Other specially protected fauna

Name ID	Species Name	Naturalised	Conservation Code	¹ Endemic To Query Area
37.	25624 <i>Falco peregrinus</i> (Peregrine Falcon)		S	
38.	24475 <i>Falco peregrinus</i> subsp. <i>macropus</i> (Australian Peregrine Falcon)		S	
39.	48070 <i>Phascogale tapoatafa</i> subsp. <i>wambenger</i> (South-western Brush-tailed Phascogale, Wambenger)		S	
Priority 1				
40.	6178 <i>Haloragis scoparia</i>		P1	
41.	11615 <i>Ptilotus sericostachyus</i> subsp. <i>roseus</i>		P1	
Priority 2				
42.	19272 <i>Johnsonia pubescens</i> subsp. <i>cygnorum</i>		P2	
43.	37683 <i>Melaleuca viminalis</i>		P2	
44.	1717 <i>Thelymitra variegata</i> (Queen of Sheba)		P2	
Priority 3				
45.	48332 <i>Amanita preissii</i> (Cinnamon-ring Lepidella)		P3	
46.	43542 <i>Amanita wadjukiorum</i>		P3	
47.	7831 <i>Angianthus micropodioides</i>		P3	
48.	45402 <i>Babingtonia urbana</i> (Coastal Plain Babingtonia)		P3	
49.	3178 <i>Byblis gigantea</i> (Rainbow Plant)		P3	
50.	1425 <i>Conostylis bracteata</i>		P3	
51.	41641 <i>Ctenotus ora</i> (Coastal Plains Skink)		P3	
52.	41801 <i>Eryngium pinnatifidum</i> subsp. <i>Palustre</i> (G.J. Keighery 13459)		P3	
53.	41810 <i>Eryngium</i> sp. <i>Subdecumbens</i> (G.J. Keighery 5390)		P3	
54.	1469 <i>Haemodorum loratum</i>		P3	
55.	11461 <i>Hibbertia spicata</i> subsp. <i>leptotheca</i>		P3	
56.	45081 <i>Lasiopetalum glutinosum</i> subsp. <i>glutinosum</i>		P3	
57.	25147 <i>Lerista lineata</i> (Perth Slider, Lined Skink)		P3	
58.	25249 <i>Neelaps calonotos</i> (Black-striped Snake, black-striped burrowing snake)		P3	
59.	974 <i>Schoenus benthamii</i>		P3	
60.	980 <i>Schoenus capillifolius</i>		P3	
61.	1008 <i>Schoenus pennisetis</i>		P3	
62.	17731 <i>Schoenus</i> sp. <i>Waroona</i> (G.J. Keighery 12235)		P3	
63.	18564 <i>Stylidium aceratum</i>		P3	
64.	24855 <i>Tyto novaehollandiae</i> subsp. <i>novaehollandiae</i> (Masked Owl (southwest))		P3	
Priority 4				
65.	141 <i>Aponogeton hexatepalus</i> (Stalked Water Ribbons)		P4	
66.	4444 <i>Boronia tenuis</i> (Blue Boronia)		P4	
67.	4763 <i>Dodonaea hackettiana</i> (Hackett's Hopbush)		P4	
68.	13191 <i>Drosera occidentalis</i> subsp. <i>occidentalis</i>		P4	
69.	6233 <i>Hydrocotyle lemnoides</i> (Aquatic Pennywort)		P4	
70.	24215 <i>Hydromys chrysogaster</i> (Water-rat, Rakali)		P4	
71.	48588 <i>Isodon fusciventer</i> (Quenda, southwestern brown bandicoot)		P4	
72.	47975 <i>Ixobrychus dubius</i> (Australian Little Bittern)		P4	
73.	4027 <i>Jacksonia sericea</i> (Waldjumi)		P4	
74.	24328 <i>Oxyura australis</i> (Blue-billed Duck)		P4	
75.	1003 <i>Schoenus natans</i> (Floating Bog-rush)		P4	
76.	14714 <i>Verticordia lindleyi</i> subsp. <i>lindleyi</i>		P4	
Non-conservation taxon				
77.	??			
78.	19708 <i>Abutilon grandifolium</i>	Y		
79.	15466 <i>Acacia applanata</i>			
80.	3282 <i>Acacia cyclops</i> (Coastal Wattle)			
81.	11926 <i>Acacia drewiana</i> subsp. <i>drewiana</i>			
82.	11661 <i>Acacia drummondii</i> subsp. <i>drummondii</i>			
83.	3374 <i>Acacia huegelii</i>			
84.	3383 <i>Acacia incurva</i>			
85.	11611 <i>Acacia lasiocarpa</i> var. <i>lasiocarpa</i>			
86.	15721 <i>Acacia lasiocarpa</i> var. <i>sedifolia</i>			
87.	3442 <i>Acacia microbotrya</i> (Manna Wattle, Kalyang)			
88.	3454 <i>Acacia nervosa</i> (Rib Wattle)			
89.	15481 <i>Acacia pulchella</i> var. <i>glaberrima</i>			
90.	15483 <i>Acacia pulchella</i> var. <i>pulchella</i>			
91.	30033 <i>Acacia saligna</i> subsp. <i>lindleyi</i>			
92.	30032 <i>Acacia saligna</i> subsp. <i>saligna</i>			
93.	3541 <i>Acacia sessilis</i>			
94.	3557 <i>Acacia stenoptera</i> (Narrow Winged Wattle)			
95.	3576 <i>Acacia tetragonocarpa</i>			
96.	3584 <i>Acacia truncata</i>			
97.	3602 <i>Acacia willdenowiana</i> (Grass Wattle)			
98.	24260 <i>Acanthiza apicalis</i> (Broad-tailed Thornbill, Inland Thornbill)			

Name ID	Species Name	Naturalised	Conservation Code	¹ Endemic To Query Area
99.	24261 <i>Acanthiza chrysorrhoa</i> (Yellow-rumped Thornbill)			
100.	24262 <i>Acanthiza inornata</i> (Western Thornbill)			
101.	1205 <i>Acanthocarpus canaliculatus</i>			
102.	24560 <i>Acanthorhynchus superciliosus</i> (Western Spinebill)			
103.	25535 <i>Accipiter cirrocephalus</i> (Collared Sparrowhawk)			
104.	24281 <i>Accipiter cirrocephalus</i> subsp. <i>cirrocephalus</i> (Collared Sparrowhawk)			
105.	25536 <i>Accipiter fasciatus</i> (Brown Goshawk)			
106.	24282 <i>Accipiter fasciatus</i> subsp. <i>fasciatus</i> (Brown Goshawk)			
107.	<i>Acercella falcipes</i>			
108.	42368 <i>Acritoscincus trilineatus</i> (Western Three-lined Skink)			
109.	25755 <i>Acrocephalus australis</i> (Australian Reed Warbler)			
110.	<i>Acrochaetium savianum</i>			
111.	6203 <i>Actinotus glomeratus</i>			
112.	6205 <i>Actinotus leucocephalus</i> (Flannel Flower)			
113.	14970 <i>Adenanthos barbiger</i>			
114.	11837 <i>Adenanthos cygnorum</i> subsp. <i>cygnorum</i> (Common Woollybush)			
115.	25544 <i>Aegotheles cristatus</i> (Australian Owlet-nightjar)			
116.	<i>Afurcagobius suppositus</i>			
117.	<i>Agapornis</i> sp.			Y
118.	38751 <i>Agaricus californicus</i>			Y
119.	38752 <i>Agaricus campestris</i>			
120.	<i>Agaricus</i> sp.			
121.	43242 <i>Agave angustifolia</i>	Y		
122.	23501 <i>Agrostocrinum scabrum</i> subsp. <i>scabrum</i>			
123.	17028 <i>Ailanthus altissima</i> (Tree of Heaven)	Y		
124.	185 <i>Aira cupaniana</i> (Silvery Hairgrass)	Y		
125.	48513 <i>Aizoon pubescens</i>	Y		
126.	<i>Akamptogonus novarae</i>			
127.	43820 <i>Albuca flaccida</i>	Y		
128.	<i>Aldrichetta forsteri</i>			
129.	1056 <i>Alexgeorgea nitens</i>			
130.	1378 <i>Allium triquetrum</i> (Three-cornered Garlic)	Y		
131.	1732 <i>Allocasuarina humilis</i> (Dwarf Sheoak)			
132.	1734 <i>Allocasuarina microstachya</i>			
133.	<i>Allothereua maculata</i>			
134.	190 <i>Alopecurus myosuroides</i> (Slender Foxtail)	Y		
135.	2648 <i>Alternanthera denticulata</i> (Lesser Joyweed)			
136.	2652 <i>Alternanthera nodiflora</i> (Common Joyweed)			
137.	48626 <i>Althenia australis</i>			
138.	38754 <i>Amanita conicobulbosa</i>			
139.	38756 <i>Amanita umbrinella</i>			
140.	38757 <i>Amanita xanthocephala</i>			
141.	2656 <i>Amaranthus caudatus</i> (Love Lies Bleeding)	Y		
142.	2659 <i>Amaranthus cruentus</i> (Redshank)	Y		
143.	2662 <i>Amaranthus hybridus</i> (Slim Amaranth)	Y		
144.	2671 <i>Amaranthus viridis</i> (Green Amaranth)	Y		
145.	1489 <i>Amaryllis belladonna</i> (Belladonna Lily)	Y		
146.	<i>Amblyomma albolimbatum</i>			
147.	<i>Amblyomma triguttatum</i>			
148.	13380 <i>Amphibromus nervosus</i>			
149.	197 <i>Amphipogon debilis</i>			
150.	200 <i>Amphipogon turbinatus</i>			
151.	13267 <i>Amyema linophylla</i> subsp. <i>linophylla</i>			
152.	2383 <i>Amyema preissii</i> (Wireleaf Mistletoe)			
153.	<i>Aname mainae</i>			
154.	<i>Aname tepperi</i>			
155.	1058 <i>Anarthria gracilis</i>			
156.	24310 <i>Anas castanea</i> (Chestnut Teal)			
157.	24312 <i>Anas gracilis</i> (Grey Teal)			
158.	24313 <i>Anas platyrhynchos</i> (Mallard)			
159.	<i>Anas platyrhynchos</i> subsp. <i>domesticus</i>			
160.	24315 <i>Anas rhynchotis</i> (Australasian Shoveler)			
161.	24316 <i>Anas superciliosa</i> (Pacific Black Duck)			
162.	<i>Anas superciliosa</i> subsp. <i>x platyrhynchos</i>			Y
163.	6300 <i>Andersonia aristata</i> (Rice Flower)			
164.	6312 <i>Andersonia involucrata</i>			
165.	7833 <i>Angianthus preissianus</i>			
166.	<i>Anguilla australis</i>			
167.	47414 <i>Anhinga novaehollandiae</i> (Australasian Darter)			
168.	11470 <i>Anigozanthos bicolor</i> subsp. <i>bicolor</i>			

Name ID	Species Name	Naturalised	Conservation Code	¹ Endemic To Query Area
169.	1409 <i>Anigozanthos humilis</i> (Catspaw)			
170.	1411 <i>Anigozanthos manglesii</i> (Mangles Kangaroo Paw, Kurulbrang)			
171.	11261 <i>Anigozanthos manglesii</i> subsp. <i>manglesii</i>			
172.	11566 <i>Anigozanthos viridis</i> subsp. <i>viridis</i>			
173.	<i>Anisops hyperion</i>			
174.	<i>Anoplocapros lenticularis</i>			
175.	17455 <i>Anredera cordifolia</i>	Y		
176.	<i>Anser anser</i>			
177.	25241 <i>Antaresia stimsoni</i> subsp. <i>stimsoni</i> (Stimson's Python)			
178.	24561 <i>Anthochaera carunculata</i> (Red Wattlebird)			
179.	24562 <i>Anthochaera lunulata</i> (Western Little Wattlebird)			
180.	12724 <i>Anthotium junciforme</i>			
181.	24599 <i>Anthus australis</i> subsp. <i>australis</i> (Australian Pipit)			
182.	3686 <i>Aotus cordifolia</i>			
183.	3688 <i>Aotus gracillima</i>			
184.	3186 <i>Aphanes arvensis</i> (Parsley Piert)	Y		
185.	1117 <i>Aphelia cyperoides</i>			
186.	1118 <i>Aphelia drummondii</i>			
187.	6210 <i>Apium annuum</i>			
188.	12040 <i>Apium prostratum</i> var. <i>prostratum</i> (Sea Celery)			
189.	<i>Apogon victoriae</i>			
190.	24991 <i>Aprasia repens</i> (Sand-plain Worm-lizard)			
191.	24285 <i>Aquila audax</i> (Wedge-tailed Eagle)			
192.	<i>Ara ararauna</i>			Y
193.	<i>Aracana aurita</i>			
194.	<i>Arachnura higginsi</i>			
195.	<i>Araneus cyphoxis</i>			
196.	<i>Araneus eburneiventris</i>			
197.	<i>Araneus senicaudatus</i>			
198.	<i>Araneus talipedatus</i>			
199.	38969 <i>Arcyria minuta</i>			
200.	38973 <i>Arcyria pomiformis</i>			
201.	25557 <i>Ardea garzetta</i> (Little Egret)			
202.	24337 <i>Ardea garzetta</i> subsp. <i>nigripes</i> (Little Egret)			
203.	25559 <i>Ardea intermedia</i> (Intermediate Egret)			
204.	41324 <i>Ardea modesta</i> (great egret, white egret)			
205.	24340 <i>Ardea novaehollandiae</i> (White-faced Heron)			
206.	24341 <i>Ardea pacifica</i> (White-necked Heron)			
207.	25560 <i>Ardea sacra</i> (Eastern Reef Egret, Eastern Reef Heron)			
208.	24610 <i>Ardeotis australis</i> (Australian Bustard)			
209.	17797 <i>Argemone ochroleuca</i> subsp. <i>ochroleuca</i>	Y		
210.	<i>Argiope protensa</i>			
211.	<i>Argiope trifasciata</i>			
212.	28293 <i>Argyranthemum frutescens</i> subsp. <i>foeniculaceum</i>	Y		
213.	<i>Argyrosomus japonicus</i>			
214.	1264 <i>Arnocrinum preissii</i>			
215.	11542 <i>Arrhenatherum elatius</i> var. <i>bulbosum</i> (Onion Twitch)	Y		
216.	25566 <i>Artamus cinereus</i> (Black-faced Woodswallow)			
217.	24352 <i>Artamus cinereus</i> subsp. <i>melanops</i> (Black-faced Woodswallow)			
218.	24353 <i>Artamus cyanopterus</i> (Dusky Woodswallow)			
219.	<i>Artema atlanta</i>			
220.	<i>Artemia linnaei</i>			
221.	<i>Artemia taeniifera</i>			
222.	<i>Artonopsis exposita</i>			
223.	226 <i>Arundo donax</i> (Giant Reed)	Y		
224.	1201 <i>Asparagus officinalis</i> (Asparagus)	Y		
225.	1364 <i>Asphodelus fistulosus</i> (Onion Weed)	Y		
226.	20350 <i>Astartea affinis</i> (West-coast Astartea)			
227.	20283 <i>Astartea scoparia</i> (Common Astartea)			
228.	6330 <i>Astroloma macrocalyx</i> (Swan Berry)			
229.	6331 <i>Astroloma microcalyx</i> (Native Cranberry)			
230.	6334 <i>Astroloma pallidum</i> (Kick Bush)			
231.	6337 <i>Astroloma stomarrhena</i> (Red Swamp Cranberry)			
232.	6339 <i>Astroloma xerophyllum</i>			
233.	2462 <i>Atriplex hypoleuca</i>			
234.	2471 <i>Atriplex prostrata</i> (Hastate Orache)	Y		
235.	2475 <i>Atriplex semibaccata</i> (Berry Saltbush)			
236.	38761 <i>Auricularia comea</i>			
237.	<i>Austracantha minax</i>			
238.	<i>Austrammo harveyi</i>			

Name ID	Species Name	Naturalised	Conservation Code	¹ Endemic To Query Area
239.	17257 <i>Austrostipa variabilis</i>			
240.	233 <i>Avena barbata</i> (Bearded Oat)	Y		
241.	20013 <i>Axonopus fissifolius</i>	Y		
242.	24318 <i>Aythya australis</i> (Hardhead)			
243.	42902 <i>Azolla rubra</i>			
244.	18280 <i>Babiana nana</i>	Y		
245.	36441 <i>Babingtonia camphorosmae</i> (Camphor Myrtle)			
246.	16346 <i>Bacopa monnieri</i>	Y		
247.	38978 <i>Badhamia panicea</i>			
248.	<i>Badumna insignis</i>			
249.	26501 <i>Bangia atropurpurea</i>			
250.	32682 <i>Banksia armata</i> var. <i>armata</i>			
251.	1800 <i>Banksia attenuata</i> (Slender Banksia, Piara)			
252.	1819 <i>Banksia grandis</i> (Bull Banksia, Pulgarla)			
253.	1822 <i>Banksia ilicifolia</i> (Holly-leaved Banksia)			
254.	1823 <i>Banksia incana</i>			
255.	1830 <i>Banksia littoralis</i> (Swamp Banksia, Pungura)			
256.	1834 <i>Banksia menziesii</i> (Firewood Banksia)			
257.	32077 <i>Banksia sessilis</i> var. <i>cygnorum</i>			
258.	1852 <i>Banksia telmatiaea</i> (Swamp Fox Banksia)			
259.	32315 <i>Barbula calycina</i>			
260.	<i>Barnardius zonarius</i>			
261.	38765 <i>Battarrea stevenii</i>			
262.	740 <i>Baumea arthropphylla</i>			
263.	741 <i>Baumea articulata</i> (Jointed Rush)			
264.	743 <i>Baumea juncea</i> (Bare Twigrush)			
265.	744 <i>Baumea laxa</i>			
266.	745 <i>Baumea preissii</i>			
267.	5393 <i>Beaufortia squarrosa</i> (Sand Beaufortia, Sand Bottlebrush, Puno)			
268.	7853 <i>Berkheya rigida</i> (African Thistle, Hamelin Thistle)	Y		
269.	25788 <i>Billardiera fraseri</i> (Elegant Pronaya)			
270.	25798 <i>Billardiera fusiformis</i> (Australian Bluebell)			
271.	24319 <i>Biziura lobata</i> (Musk Duck)			
272.	1417 <i>Blancoa canescens</i> (Winter Bell)			
273.	38848 <i>Bolbitius titubans</i>			
274.	749 <i>Bolboschoenus caldwellii</i> (Marsh Club-rush)			
275.	<i>Boletellus obscurecoccineus</i>			
276.	<i>Boletus</i> sp.			
277.	16636 <i>Boronia crenulata</i> subsp. <i>viminea</i>			
278.	4414 <i>Boronia cymosa</i> (Granite Boronia)			
279.	4417 <i>Boronia dichotoma</i>			
280.	17665 <i>Boronia purdieana</i> subsp. <i>purdieana</i>			
281.	11381 <i>Boronia ramosa</i> subsp. <i>anethifolia</i>			
282.	1272 <i>Borya scirpoidea</i>			
283.	1273 <i>Borya sphaerocephala</i> (Pincushions)			
284.	24251 <i>Bos taurus</i> (European Cattle)	Y		
285.	3710 <i>Bossiaea eriocarpa</i> (Common Brown Pea)			
286.	3714 <i>Bossiaea ornata</i> (Broad Leaved Brown Pea)			
287.	6341 <i>Brachyloma preissii</i> (Globe Heath)			
288.	7878 <i>Brachyscome iberidifolia</i>			
289.	42380 <i>Brachyuophis fasciolatus</i> subsp. <i>fasciolatus</i> (Narrow-banded Shovel-nosed Snake)			
290.	42381 <i>Brachyuophis semifasciatus</i> (Southern Shovel-nosed Snake)			
291.	2993 <i>Brassica fruticulosa</i> (Twiggy Turnip)	Y		
292.	3000 <i>Brassica tournefortii</i> (Mediterranean Turnip)	Y		
293.	2995 <i>Brassica x napus</i>	Y		
294.	244 <i>Briza maxima</i> (Blowfly Grass)	Y		
295.	245 <i>Briza minor</i> (Shivery Grass)	Y		
296.	246 <i>Bromus alopecuroides</i>	Y		
297.	249 <i>Bromus diandrus</i> (Great Brome)	Y		
298.	250 <i>Bromus hordeaceus</i> (Soft Brome)	Y		
299.	1383 <i>Burchardia bairdiae</i>			
300.	1385 <i>Burchardia multiflora</i> (Dwarf Burchardia)			
301.	24359 <i>Burhinus grallarius</i> (Bush Stone-curlew)			
302.	25713 <i>Cacatua galerita</i> (Sulphur-crested Cockatoo)			
303.	25714 <i>Cacatua pastinator</i> (Western Long-billed Corella)			
304.	25715 <i>Cacatua roseicapilla</i> (Galah)			
305.	25716 <i>Cacatua sanguinea</i> (Little Corella)			
306.	24729 <i>Cacatua tenuirostris</i> (Eastern Long-billed Corella)	Y		
307.	25598 <i>Cacomantis flabelliformis</i> (Fan-tailed Cuckoo)			
308.	24427 <i>Cacomantis flabelliformis</i> subsp. <i>flabelliformis</i> (Fan-tailed Cuckoo)			

Name ID	Species Name	Naturalised	Conservation Code	¹ Endemic To Query Area
309.	42307 <i>Cacomantis pallidus</i> (Pallid Cuckoo)			
310.	1276 <i>Caesia micrantha</i> (Pale Grass Lily)			
311.	15330 <i>Caladenia arenicola</i>			
312.	1586 <i>Caladenia discoidea</i> (Dancing Orchid)			
313.	1590 <i>Caladenia ferruginea</i> (Rusty Spider Orchid)			
314.	15348 <i>Caladenia flava</i> subsp. <i>flava</i>			
315.	1599 <i>Caladenia latifolia</i> (Pink Fairy Orchid)			
316.	15365 <i>Caladenia longicauda</i> subsp. <i>longicauda</i>			
317.	1603 <i>Caladenia longiclavata</i> (Clubbed Spider Orchid)			
318.	17760 <i>Caladenia nobilis</i>			
319.	15503 <i>Caladenia paludosa</i>			
320.	15377 <i>Caladenia reptans</i> subsp. <i>reptans</i>			
321.	2848 <i>Calandrinia corrigioloides</i> (Strap Purslane)			
322.	1214 <i>Calectasia grandiflora</i> (Blue Tinsel Lily)			
323.	19309 <i>Calectasia narragara</i>			
324.	4717 <i>Callitriche stagnalis</i> (Common Starwort)	Y		
325.	36520 <i>Callitris acuminata</i> (Dwarf Cypress)			
326.	96 <i>Callitris preissii</i> (Rottnest Island Pine, Maro)			
327.	36600 <i>Callitris pyramidalis</i> (Swamp Cypress)			
328.	5411 <i>Calothamnus hirsutus</i>			
329.	5415 <i>Calothamnus lateralis</i>			
330.	35816 <i>Calothamnus quadrifidus</i> subsp. <i>quadrifidus</i>			
331.	5428 <i>Calothamnus rupestris</i> (Mouse Ears)			
332.	5429 <i>Calothamnus sanguineus</i> (Silky-leaved Blood flower, Pindak)			
333.	25717 <i>Calyptorhynchus banksii</i> (Red-tailed Black-Cockatoo)			
334.	5439 <i>Calytrix angulata</i> (Yellow Starflower)			
335.	5441 <i>Calytrix aurea</i>			
336.	5458 <i>Calytrix flavescens</i> (Summer Starflower)			
337.	5460 <i>Calytrix fraseri</i> (Pink Summer Calytrix)			
338.	5461 <i>Calytrix glutinosa</i>			
339.	5476 <i>Calytrix sapphirina</i>			
340.	<i>Calytrix</i> sp.			
341.	32338 <i>Campylopus introflexus</i>	Y		
342.	30883 <i>Canis lupus</i> subsp. <i>familiaris</i> (Dog)	Y		
343.	13488 <i>Canna x generalis</i>	Y		
344.	3004 <i>Capsella bursa-pastoris</i> (Shepherd's Purse)	Y		
345.	<i>Carassius auratus</i>			
346.	3005 <i>Cardamine hirsuta</i> (Common Bittercress)	Y		
347.	18555 <i>Cardamine</i> sp. <i>Jandakot</i> (P. Luff s.n. 4/7/1969)	Y		
348.	25625 <i>Carduelis carduelis</i> (Goldfinch, European Goldfinch)	Y		
349.	24480 <i>Carduelis carduelis</i> subsp. <i>britannica</i> (Goldfinch)	Y		
350.	753 <i>Carex appressa</i> (Tall Sedge)			
351.	754 <i>Carex divisa</i> (Divided Sedge)	Y		
352.	755 <i>Carex fascicularis</i> (Tassel Sedge)			
353.	1162 <i>Cartonema phylloides</i>			
354.	2951 <i>Cassytha flava</i> (Dodder Laurel)			
355.	2952 <i>Cassytha glabella</i> (Tangled Dodder Laurel)			
356.	2957 <i>Cassytha racemosa</i> (Dodder Laurel)			
357.	11242 <i>Cassytha racemosa</i> forma <i>pilosa</i>			
358.	11799 <i>Cassytha racemosa</i> forma <i>racemosa</i>			
359.	1742 <i>Casuarina obesa</i> (Swamp Sheoak, Kuli)			
360.	13685 <i>Catapodium rigidum</i> (Rigid Fescue)	Y		
361.	27380 <i>Caulerpa flexilis</i> var. <i>muelleri</i>			
362.	760 <i>Caustis dioica</i>			
363.	<i>Ceinidae</i> sp.			
364.	<i>Celaenia excavata</i>			
365.	259 <i>Cenchrus echinatus</i> (Burrgrass)	Y		
366.	41566 <i>Cenchrus longisetus</i> (Feathertop)	Y		
367.	41563 <i>Cenchrus purpureus</i> (Elephant Grass)	Y		
368.	7917 <i>Centaurea solstitialis</i> (St Barnaby's Thistle, Yellow Star Thistle)	Y		
369.	6542 <i>Centaureum tenuiflorum</i>	Y		
370.	6214 <i>Centella asiatica</i>			
371.	7918 <i>Centipeda cunninghamii</i> (Common Sneezewood, Gukwonderuk, Old Man Weed)			
372.	1121 <i>Centrolepis aristata</i> (Pointed Centrolepis)			
373.	1134 <i>Centrolepis polygyna</i> (Wiry Centrolepis)			
374.	2889 <i>Cerastium glomeratum</i> (Mouse Ear Chickweed)	Y		
375.	38982 <i>Ceratiomyxa fruticulosa</i>			
376.	32462 <i>Ceratodon purpureus</i> subsp. <i>convolutus</i>			
377.	<i>Ceratopogonidae</i> sp.			
378.	17685 <i>Chaetanthus aristatus</i>			

Name ID	Species Name	Naturalised	Conservation Code	¹ Endemic To Query Area
379.	24186 <i>Chalinolobus gouldii</i> (Gould's Wattled Bat)			
380.	24187 <i>Chalinolobus morio</i> (Chocolate Wattled Bat)			
381.	18156 <i>Chamaecytisus palmensis</i> (Tagasaste)	Y		
382.	1280 <i>Chamaescilla corymbosa</i> (Blue Squill)			
383.	11299 <i>Chamaescilla corymbosa</i> var. <i>corymbosa</i>			
384.	5498 <i>Chamelaucium uncinatum</i> (Geraldton Wax)			
385.	24377 <i>Charadrius ruficapillus</i> (Red-capped Plover)			
386.	1513 <i>Chasmanthe floribunda</i> (African Cornflag)	Y		
387.	<i>Cheilodactylus gibbosus</i>			
388.	3169 <i>Cheiranthra preissiana</i>			
389.	<i>Chelmonops curiosus</i>			
390.	43380 <i>Chelodina colliei</i> (South-western Snake-necked Turtle)			
391.	24321 <i>Chenonetta jubata</i> (Australian Wood Duck, Wood Duck)			
392.	2483 <i>Chenopodium album</i> (Fat Hen)	Y		
393.	47909 <i>Cheramoeca leucosterna</i> (White-backed Swallow)			
394.	33939 <i>Cherax cainii</i> (Marron)			
395.	<i>Cherax destructor</i>			
396.	<i>Cherax quinquecarinatus</i>			
397.	<i>Chironominae</i> sp.			
398.	267 <i>Chloris gayana</i> (Rhodes Grass)	Y		
399.	<i>Chlorophyllum brunneum</i>			
400.	38768 <i>Chlorophyllum molybdites</i>			
401.	7925 <i>Chondrilla juncea</i> (Skeleton Weed)	Y		
402.	763 <i>Chorizandra enodis</i> (Black Bristlerush)			
403.	3753 <i>Chonizema dicksonii</i> (Yellow-eyed Flame Pea)			
404.	24980 <i>Christinus marmoratus</i> (Marbled Gecko)			
405.	<i>Chroicocephalus novaehollandiae</i>			
406.	24431 <i>Chrysococcyx basalis</i> (Horsfield's Bronze Cuckoo)			
407.	25601 <i>Chrysococcyx lucidus</i> (Shining Bronze Cuckoo)			
408.	24432 <i>Chrysococcyx lucidus</i> subsp. <i>plagosus</i> (Shining Bronze Cuckoo)			
409.	17585 <i>Chrysocoma coma-aurea</i>	Y		Y
410.	7933 <i>Chthonocephalus pseudevax</i> (Woolly Groundheads)			
411.	6543 <i>Cicendia filiformis</i> (Slender Cicendia)	Y		
412.	18303 <i>Cinnamomum camphora</i>	Y		
413.	24288 <i>Circus approximans</i> (Swamp Harrier)			
414.	7937 <i>Cirsium vulgare</i> (Spear Thistle, Scotch Thistle)	Y		
415.	27665 <i>Cladia ferdinandii</i>			
416.	24774 <i>Cladorhynchus leucocephalus</i> (Banded Stilt)			
417.	<i>Cleidopus gloriamaris</i>			
418.	2929 <i>Clematis pubescens</i> (Common Clematis)			
419.	38770 <i>Clitocybe kenkulunea</i>			
420.	<i>Cnidoglanis macrocephalus</i>			
421.	26675 <i>Codium laminarioides</i>			
422.	276 <i>Coix lacryma-jobi</i> (Job's Tears)	Y		Y
423.	44593 <i>Coleonema pulchellum</i>	Y		
424.	25675 <i>Colluricincla harmonica</i> (Grey Shrike-thrush)			
425.	24613 <i>Colluricincla harmonica</i> subsp. <i>rufiventris</i> (Grey Shrike-thrush)			
426.	32999 <i>Colocasia esculenta</i> var. <i>esculenta</i>	Y		
427.	<i>Coltricia cinnamomea</i>			
428.	24399 <i>Columba livia</i> (Domestic Pigeon)	Y		
429.	38990 <i>Comatricha nigra</i>			
430.	4550 <i>Comesperma calymega</i> (Blue-spike Milkwort)			
431.	4551 <i>Comesperma ciliatum</i>			
432.	4559 <i>Comesperma polygaloides</i> (Small Milkwort)			
433.	4564 <i>Comesperma virgatum</i> (Milkwort)			
434.	48634 <i>Commersonia corniculata</i>			
435.	15516 <i>Conospermum canaliculatum</i> subsp. <i>canaliculatum</i>			
436.	1875 <i>Conospermum huegelii</i> (Slender Smokebush)			
437.	1882 <i>Conospermum stoechadis</i> (Common Smokebush)			
438.	15520 <i>Conospermum stoechadis</i> subsp. <i>sclerophyllum</i>			
439.	15611 <i>Conospermum stoechadis</i> subsp. <i>stoechadis</i> (Common Smokebush)			
440.	1885 <i>Conospermum triplinervium</i> (Tree Smokebush)			
441.	6347 <i>Conostephium minus</i> (Pink-tipped Pearl flower)			
442.	6348 <i>Conostephium pendulum</i> (Pearl Flower)			
443.	6349 <i>Conostephium preissii</i>			
444.	1418 <i>Conostylis aculeata</i> (Prickly Conostylis)			
445.	11513 <i>Conostylis aculeata</i> subsp. <i>cygnorum</i>			
446.	12109 <i>Conostylis aculeata</i> subsp. <i>preissii</i>			
447.	1423 <i>Conostylis aurea</i> (Golden Conostylis)			
448.	11438 <i>Conostylis candicans</i> subsp. <i>candicans</i>			

Name ID	Species Name	Naturalised	Conservation Code	¹ Endemic To Query Area
449.	1429 <i>Conostylis caricina</i>			
450.	11695 <i>Conostylis festucacea</i> subsp. <i>festucacea</i>			
451.	1436 <i>Conostylis juncea</i>			
452.	11597 <i>Conostylis setigera</i> subsp. <i>setigera</i>			
453.	1455 <i>Conostylis setosa</i> (White Cottonhead)			
454.	5502 <i>Conothamnus trinervis</i>			
455.	7939 <i>Conyza bonariensis</i> (Flaxleaf Fleabane)	Y		
456.	7941 <i>Conyza parva</i>	Y		
457.	20074 <i>Conyza sumatrensis</i>	Y		
458.	<i>Coprinellus micaceus</i>			
459.	<i>Coprinus comatus</i>			
460.	25568 <i>Coracina novaehollandiae</i> (Black-faced Cuckoo-shrike)			
461.	24362 <i>Coracina novaehollandiae</i> subsp. <i>novaehollandiae</i> (Black-faced Cuckoo-shrike)			
462.	<i>Coris auricularis</i>			
463.	<i>Cormocephalus aurantiipes</i>			
464.	<i>Cormocephalus novaehollandiae</i>			
465.	<i>Cormocephalus rubriceps</i>			
466.	<i>Cormocephalus strigosus</i>			
467.	<i>Cormocephalus turneri</i>			
468.	2891 <i>Corrigiola litoralis</i> (Strapwort)	Y		
469.	48259 <i>Cortaderia selloana</i> subsp. <i>selloana</i>	Y		
470.	<i>Cortinarius erythraeus</i>			
471.	<i>Cortinarius rotundisporus</i>			
472.	24416 <i>Corvus bennetti</i> (Little Crow)			
473.	25592 <i>Corvus coronoides</i> (Australian Raven)			
474.	24417 <i>Corvus coronoides</i> subsp. <i>perplexus</i> (Australian Raven)			
475.	17104 <i>Corymbia calophylla</i> (Marri)			
476.	7943 <i>Cotula australis</i> (Common Cotula)			
477.	7944 <i>Cotula bipinnata</i> (Ferny Cotula)	Y		
478.	7945 <i>Cotula coronopifolia</i> (Waterbutton)	Y		
479.	7946 <i>Cotula cotuloides</i> (Smooth Cotula)			
480.	7947 <i>Cotula turbinata</i> (Funnel Weed)	Y		
481.	24671 <i>Coturnix pectoralis</i> (Stubble Quail)			
482.	24420 <i>Cracticus nigrogularis</i> (Pied Butcherbird)			
483.	25595 <i>Cracticus tibicen</i> (Australian Magpie)			
484.	24422 <i>Cracticus tibicen</i> subsp. <i>dorsalis</i> (White-backed Magpie)			
485.	25596 <i>Cracticus torquatus</i> (Grey Butcherbird)			
486.	3136 <i>Crassula alata</i>	Y		
487.	11221 <i>Crassula alata</i> var. <i>alata</i>	Y		
488.	11709 <i>Crassula colorata</i> var. <i>acuminata</i>			
489.	11563 <i>Crassula colorata</i> var. <i>colorata</i>			
490.	3138 <i>Crassula decumbens</i> (Rufous Stonecrop)			
491.	11349 <i>Crassula decumbens</i> var. <i>decumbens</i>			
492.	3142 <i>Crassula natans</i>	Y		
493.	15706 <i>Crassula natans</i> var. <i>minus</i>	Y		
494.	38997 <i>Craterium leucocephalum</i>			
495.	38998 <i>Craterium minutum</i>			
496.	<i>Craterocephalus mugiloides</i>			
497.	38780 <i>Crepidotus eucalyptorum</i>			
498.	29054 <i>Crepis foetida</i> subsp. <i>foetida</i> (Stinking Hawksbeard)	Y		
499.	25398 <i>Crinia georgiana</i> (Quacking Frog)			
500.	25399 <i>Crinia glauerti</i> (Clicking Frog)			
501.	25400 <i>Crinia insignifera</i> (Squelching Froglet)			
502.	13527 <i>Croninia kingiana</i>			
503.	13470 <i>Cryptandra arbutiflora</i> var. <i>arbutiflora</i>			
504.	13484 <i>Cryptandra arbutiflora</i> var. <i>tubulosa</i>			
505.	4810 <i>Cryptandra scoparia</i>			
506.	30893 <i>Cryptoblepharus buchananii</i>			
507.	25020 <i>Cryptoblepharus plagiocephalus</i>			
508.	30899 <i>Ctenophorus adelaidensis</i> (Southern Heath Dragon, Western Heath Dragon)			
509.	25027 <i>Ctenotus australis</i>			
510.	25039 <i>Ctenotus fallens</i>			
511.	25040 <i>Ctenotus gemmula</i> (Jewelled South-west Ctenotus (Swan Coastal Plain subpop P3), skink)			
512.	25049 <i>Ctenotus labillardieri</i>			
513.	6663 <i>Cuscuta epithymum</i> (Lesser Dodder, Greater Dodder)	Y		
514.	11021 <i>Cuscuta planiflora</i>	Y		
515.	15114 <i>Cyanicula gemmata</i>			
516.	768 <i>Cyathochaeta avenacea</i>			
517.	769 <i>Cyathochaeta clandestina</i>			

Name ID	Species Name	Naturalised	Conservation Code	¹ Endemic To Query Area
518.	25087 <i>Cyclodomorphus celatus</i> (Western Slender Blue-tongue)			
519.	<i>Cyclosa trilobata</i>			
520.	6216 <i>Cyclosporum leptophyllum</i>	Y		
521.	40661 <i>Cycnogeton lineare</i>			
522.	24322 <i>Cygnus atratus</i> (Black Swan)			
523.	19625 <i>Cymbalaria muralis</i> subsp. <i>muralis</i>	Y		
524.	283 <i>Cynodon dactylon</i> (Couch)	Y		
525.	776 <i>Cyperus brevifolius</i> (Kyllinga Weed)	Y		
526.	783 <i>Cyperus congestus</i> (Dense Flat-sedge)	Y		
527.	794 <i>Cyperus gymnocaulos</i> (Spiny Flat-sedge)			
528.	18198 <i>Cyperus papyrus</i>	Y		
529.	806 <i>Cyperus polystachyos</i> (Bunchy Sedge)			
530.	815 <i>Cyperus tenellus</i> (Tiny Flatsedge)	Y		
531.	816 <i>Cyperus tenuiflorus</i> (Scaly Sedge)	Y		
532.	30901 <i>Dacelo novaeguineae</i> (Laughing Kookaburra)	Y		
533.	30902 <i>Dacelo novaeguineae</i> subsp. <i>novaeguineae</i> (Laughing Kookaburra)	Y		
534.	7454 <i>Dampiera linearis</i> (Common Dampiera)			
535.	7462 <i>Dampiera pedunculata</i>			
536.	7484 <i>Dampiera trigona</i> (Angled-stem Dampiera)			
537.	25673 <i>Daphoenositta chrysoptera</i> (Varied Sittella)			
538.	24606 <i>Daphoenositta chrysoptera</i> subsp. <i>pileata</i> (Varied Sittella, Black-capped Sittella)			
539.	1220 <i>Dasyopogon obliquifolius</i>			
540.	6963 <i>Datura metel</i> (Downy Thornapple)	Y		
541.	6964 <i>Datura stramonium</i> (Common Thornapple)	Y		
542.	6965 <i>Datura wrightii</i> (Hairy Thornapple)	Y		
543.	6218 <i>Daucus glochidiatus</i> (Australian Carrot)			
544.	3793 <i>Daviesia angulata</i>			
545.	19747 <i>Daviesia decurrens</i> subsp. <i>decurrens</i>			
546.	18560 <i>Daviesia divaricata</i> subsp. <i>divaricata</i>			
547.	15505 <i>Daviesia incrassata</i> subsp. <i>incrassata</i>			
548.	16585 <i>Daviesia nudiflora</i> subsp. <i>nudiflora</i>			
549.	3832 <i>Daviesia physodes</i>			
550.	3845 <i>Daviesia triflora</i>			
551.	<i>Deinopis unicolor</i>			Y
552.	25766 <i>Delma fraseri</i> (Fraser's Legless Lizard)			
553.	24999 <i>Delma grayii</i>			
554.	25296 <i>Demansia psammophis</i> subsp. <i>reticulata</i> (Yellow-faced Whipsnake)			
555.	25325 <i>Dendrelaphis punctulata</i> (Green Tree Snake)			
556.	38784 <i>Descomyces albus</i>			
557.	17691 <i>Desmocladius fasciculatus</i>			
558.	16595 <i>Desmocladius flexuosus</i>			
559.	46362 <i>Desmocladius lateriflorus</i>			
560.	39008 <i>Diachea leucopodia</i>			
561.	39009 <i>Diachea radiata</i>			Y
562.	25607 <i>Dicaeum hirundinaceum</i> (Mistletoebird)			
563.	1289 <i>Dichopogon preissii</i>			
564.	39012 <i>Diderma cinereum</i>			
565.	39016 <i>Diderma saundersii</i>			Y
566.	39024 <i>Didymium serpula</i>			
567.	39026 <i>Didymium verrucosporum</i>			
568.	17838 <i>Dielsia stenostachya</i>			
569.	17736 <i>Digitaria aequiglumis</i>	Y		
570.	311 <i>Digitaria ciliaris</i> (Summer Grass)	Y		
571.	314 <i>Digitaria didactyla</i> (Queensland Blue Couch)	Y		
572.	18667 <i>Digitaria eriantha</i>	Y		
573.	320 <i>Digitaria sanguinalis</i> (Crab Grass)	Y		
574.	321 <i>Digitaria violascens</i>	Y		
575.	<i>Dingosa murata</i>			
576.	<i>Dingosa serrata</i>			
577.	<i>Dinocambala ingens</i>			
578.	<i>Diodon nichthemerus</i>			
579.	1509 <i>Dioscorea hastifolia</i> (Warrine, Warrarn)			
580.	<i>Diplocarpon rosae</i>			
581.	24939 <i>Diplodactylus polyophthalmus</i>			
582.	18589 <i>Diplopeltis huegelii</i> subsp. <i>lehmannii</i>			
583.	27727 <i>Dirinaria aegialita</i>			
584.	7055 <i>Dischisma capitatum</i> (Woolly-headed Dischisma)	Y		
585.	7961 <i>Dittrichia graveolens</i> (Stinkwort)	Y		
586.	11049 <i>Diuris corymbosa</i>			
587.	42231 <i>Diuris decremента</i>			

Name ID	Species Name	Naturalised	Conservation Code	¹ Endemic To Query Area
588.	1634 <i>Diuris laxiflora</i> (Bee Orchid)			
589.	1640 <i>Drakaea glyptodon</i> (King-in-his-carriage)			
590.	<i>Drechslera poae</i>			Y
591.	2800 <i>Drosanthemum candens</i> (Redondo Creeper)	Y		
592.	3091 <i>Drosera bulbigena</i> (Midget Sundew)			
593.	3095 <i>Drosera erythrorhiza</i> (Red Ink Sundew)			
594.	13217 <i>Drosera erythrorhiza</i> subsp. <i>erythrorhiza</i>			
595.	3097 <i>Drosera gigantea</i> (Giant Sundew)			
596.	3098 <i>Drosera glanduligera</i> (Pimpernel Sundew)			
597.	13195 <i>Drosera helodes</i>			
598.	3101 <i>Drosera heterophylla</i> (Swamp Rainbow)			
599.	3106 <i>Drosera macrantha</i> (Bridal Rainbow)			
600.	14298 <i>Drosera macrantha</i> subsp. <i>macrantha</i>			
601.	3109 <i>Drosera menziesii</i> (Pink Rainbow)			
602.	11853 <i>Drosera menziesii</i> subsp. <i>menziesii</i>			
603.	48710 <i>Drosera micrantha</i>			
604.	3110 <i>Drosera microphylla</i> (Golden Rainbow)			
605.	48709 <i>Drosera minutiflora</i>			
606.	11768 <i>Drosera neesii</i> subsp. <i>neesii</i>			
607.	3114 <i>Drosera nitidula</i> (Shining Sundew)			
608.	3115 <i>Drosera occidentalis</i> (Western Sundew)			
609.	3118 <i>Drosera pallida</i> (Pale Rainbow)			
610.	3123 <i>Drosera platystigma</i> (Black-eyed Sundew)			
611.	29178 <i>Drosera porrecta</i>			
612.	3128 <i>Drosera ramellosa</i> (Branched Sundew)			
613.	8911 <i>Drosera rosulata</i>			
614.	<i>Drosera</i> sp.			
615.	13185 <i>Drosera spilos</i>			
616.	3131 <i>Drosera stolonifera</i> (Leafy Sundew)			
617.	3133 <i>Drosera subhirtella</i> (Sunny Rainbow)			
618.	13205 <i>Drosera tubaestylis</i>			
619.	3135 <i>Drosera zonaria</i> (Painted Sundew)			
620.	33500 <i>Dysphania ambrosioides</i> (Mexican Tea)	Y		
621.	<i>Dytiscidae</i> sp.			
622.	7374 <i>Ecballium elaterium</i> (Squirting Cucumber)	Y		
623.	328 <i>Echinochloa colona</i> (Awnless Barnyard Grass)	Y		
624.	11105 <i>Echinochloa crus-galli</i>	Y		
625.	329 <i>Echinochloa crus-pavonis</i> (South American Barnyard Grass)	Y		
626.	337 <i>Echinochloa pyramidalis</i> (Antelope Grass)	Y		
627.	338 <i>Echinochloa telmatophila</i> (Swamp Barnyard Grass)	Y		
628.	25251 <i>Echiopsis curta</i> (Bardick)			
629.	8450 <i>Eclipta prostrata</i>	Y		
630.	<i>Edelia vittata</i>			
631.	25096 <i>Egernia kingii</i> (King's Skink)			
632.	25100 <i>Egernia napoleonis</i>			
633.	<i>Egretta garzetta</i>			
634.	<i>Egretta novaehollandiae</i>			
635.	11818 <i>Ehrharta brevifolia</i> var. <i>brevifolia</i>	Y		
636.	347 <i>Ehrharta calycina</i> (Perennial Veldt Grass)	Y		
637.	<i>Ehrharta</i> sp.			
638.	<i>Elanus axillaris</i>			
639.	25540 <i>Elanus caeruleus</i> (Black-shouldered Kite)			
640.	24290 <i>Elanus caeruleus</i> subsp. <i>axillaris</i> (Australian Black-shouldered Kite)			
641.	25250 <i>Elapognathus coronatus</i> (Crowned Snake)			
642.	5187 <i>Elatine gratioloides</i> (Waterwort)			
643.	822 <i>Eleocharis acuta</i> (Common Spikerush)			
644.	353 <i>Eleusine indica</i> (Crowsfoot Grass)	Y		
645.	47937 <i>Eiseyornis melanops</i> (Black-fronted Dotterel)			
646.	1643 <i>Elythranthera brunonis</i> (Purple Enamel Orchid)			
647.	1644 <i>Elythranthera emarginata</i> (Pink Enamel Orchid)			
648.	39030 <i>Enerthenema papillatum</i>			
649.	<i>Engraulis australis</i>			
650.	<i>Enoplosus armatus</i>			
651.	45819 <i>Entorrhiza casparyana</i>			Y
652.	<i>Eolophus roseicapillus</i>			
653.	24651 <i>Eopsaltria australis</i> subsp. <i>griseogularis</i> (Western Yellow Robin)			
654.	1645 <i>Epiblema grandiflorum</i> (Babe-in-a-cradle)			
655.	6132 <i>Epilobium ciliatum</i>	Y		
656.	14289 <i>Epilobium tetragonum</i> subsp. <i>tetragonum</i>	Y		
657.	<i>Epinephelides armatus</i>			

Name ID	Species Name	Naturalised	Conservation Code	¹ Endemic To Query Area
658.	24567 <i>Epthianura albifrons</i> (White-fronted Chat)			
659.	374 <i>Eragrostis cilianensis</i> (Stinkgrass)	Y		
660.	379 <i>Eragrostis elongata</i> (Clustered Lovegrass)			
661.	17610 <i>Eragrostis tenuifolia</i>	Y		
662.	13950 <i>Eremaea asterocarpa</i> subsp. <i>asterocarpa</i>			
663.	5540 <i>Eremaea fimbriata</i>			
664.	5541 <i>Eremaea pauciflora</i>			
665.	14104 <i>Eremaea pauciflora</i> var. <i>pauciflora</i>			
666.	17175 <i>Eremophila glabra</i> subsp. <i>albicans</i>			
667.	15415 <i>Eriochilus scaber</i> subsp. <i>scaber</i>			
668.	<i>Eriophora biapicata</i>			
669.	4332 <i>Erodium botrys</i> (Long Storksbill)	Y		
670.	4335 <i>Erodium cygnorum</i> (Blue Heronsbill)			
671.	4336 <i>Erodium moschatum</i> (Musky Crowfoot)	Y		
672.	<i>Erysiphe necator</i>			
673.	48633 <i>Erythrina crista-galli</i>	Y		Y
674.	18299 <i>Erythrina x sykesii</i>	Y		
675.	24379 <i>Erythrogonys cinctus</i> (Red-kneed Dotterel)			
676.	<i>Ethmostigmus rubripes</i>			
677.	5708 <i>Eucalyptus marginata</i> (Jarrah, Djara)			
678.	13547 <i>Eucalyptus marginata</i> subsp. <i>marginata</i> (Jarrah)			
679.	5763 <i>Eucalyptus rudis</i> (Flooded Gum, Kulurda)			
680.	13511 <i>Eucalyptus rudis</i> subsp. <i>rudis</i>			
681.	3872 <i>Euchilopsis linearis</i> (Swamp Pea)			
682.	4624 <i>Euphorbia dendroides</i>	Y		
683.	20014 <i>Euphorbia hyssopifolia</i>	Y		
684.	34160 <i>Euphorbia lathyris</i> (Caper Spurge)	Y		
685.	29940 <i>Euphorbia maculata</i>	Y		
686.	4633 <i>Euphorbia marginata</i> (Snow-on-the-mountain)	Y		
687.	4638 <i>Euphorbia peplus</i> (Petty Spurge)	Y		
688.	34757 <i>Euphorbia prostrata</i>	Y		
689.	4648 <i>Euphorbia terracina</i> (Geraldton Carnation Weed)	Y		
690.	<i>Eurytion incisunguis</i>			Y
691.	3880 <i>Eutaxia virgata</i>			
692.	25621 <i>Falco berigora</i> (Brown Falcon)			
693.	24471 <i>Falco berigora</i> subsp. <i>berigora</i> (Brown Falcon)			
694.	25622 <i>Falco cenchroides</i> (Australian Kestrel, Nankeen Kestrel)			
695.	24472 <i>Falco cenchroides</i> subsp. <i>cenchroides</i> (Australian Kestrel, Nankeen Kestrel)			
696.	25623 <i>Falco longipennis</i> (Australian Hobby)			
697.	24474 <i>Falco longipennis</i> subsp. <i>longipennis</i> (Australian Hobby)			
698.	8850 <i>Fallopia convolvulus</i>	Y		
699.	24041 <i>Felis catus</i> (Cat)	Y		
700.	11445 <i>Ferraria crispa</i> subsp. <i>crispa</i>	Y		
701.	20216 <i>Ficinia nodosa</i> (Knotted Club Rush)			
702.	894 <i>Fimbristylis velata</i>			
703.	<i>Fistulina hepatica</i>			
704.	6221 <i>Foeniculum vulgare</i> (Fennel)	Y		
705.	<i>Fomitopsis lilacinogilva</i>			
706.	5209 <i>Frankenia pauciflora</i> (Seaheath)			
707.	18392 <i>Freesia alba</i> x <i>leichtlinii</i>	Y		
708.	25727 <i>Fulica atra</i> (Eurasian Coot)			
709.	24761 <i>Fulica atra</i> subsp. <i>australis</i> (Eurasian Coot)			
710.	39033 <i>Fuligo septica</i>			
711.	8365 <i>Fumaria bastardii</i>	Y		
712.	2969 <i>Fumaria capreolata</i> (Whiteflower Fumitory)	Y		
713.	31532 <i>Fumaria muralis</i> subsp. <i>muralis</i>	Y		
714.	30916 <i>Funambulus pennanti</i> (Indian Palm Squirrel)	Y		
715.	902 <i>Gahnia decomposita</i>			
716.	907 <i>Gahnia trifida</i> (Coast Saw-sedge)			
717.	34028 <i>Galaxias occidentalis</i> (Western Minnow)			
718.	7976 <i>Galinsoga parviflora</i> (Potato Weed)	Y		
719.	<i>Gallinula jobiensis</i>			
720.	25729 <i>Gallinula tenebrosa</i> (Dusky Moorhen)			
721.	24763 <i>Gallinula tenebrosa</i> subsp. <i>tenebrosa</i> (Dusky Moorhen)			
722.	25730 <i>Gallirallus philippensis</i> (Buff-banded Rail)			
723.	24765 <i>Gallirallus philippensis</i> subsp. <i>mellori</i> (Buff-banded Rail)			
724.	<i>Gallus gallus</i>			
725.	<i>Gambusia affinis</i>			
726.	20346 <i>Gamochoaeta coarctata</i>	Y		
727.	19195 <i>Gamochoaeta pensylvanica</i>	Y		

Name ID	Species Name	Naturalised	Conservation Code	¹ Endemic To Query Area
728.	20475 <i>Gastrolobium capitatum</i>			
729.	20473 <i>Gastrolobium ebracteolatum</i>			
730.	20483 <i>Gastrolobium linearifolium</i>			
731.	20512 <i>Gastrolobium praemorsum</i>			
732.	42314 <i>Gavicalis virescens (Singing Honeyeater)</i>			
733.	<i>Geastrum sp.</i>			
734.	38787 <i>Geastrum triplex</i>			
735.	24959 <i>Gehyra variegata</i>			
736.	32380 <i>Gemmabryum pachythecum</i>			
737.	4339 <i>Geranium molle (Dove's Foot Cranesbill)</i>	Y		
738.	4341 <i>Geranium solanderi (Native Geranium)</i>			
739.	<i>Gerres subfasciatus</i>			
740.	25530 <i>Gerygone fusca (Western Gerygone)</i>			
741.	1518 <i>Gladiolus angustus (Long Tubed Painted Lady)</i>	Y		
742.	1520 <i>Gladiolus caryophyllaceus (Wild Gladiolus)</i>	Y		
743.	1524 <i>Gladiolus undulatus (Wild Gladiolus)</i>	Y		
744.	29836 <i>Glandularia aristigera</i>	Y		
745.	6143 <i>Glischrocaryon aureum (Common Popflower)</i>			
746.	17043 <i>Glyceria declinata</i>	Y		
747.	47962 <i>Glyciphila melanops (Tawny-crowned Honeyeater)</i>			
748.	7991 <i>Gnephosis drummondii</i>			
749.	8002 <i>Gnephosis tenuissima</i>			
750.	6587 <i>Gomphocarpus fruticosus (Narrowleaf Cottonbush)</i>	Y		
751.	3945 <i>Gompholobium aristatum</i>			
752.	10909 <i>Gompholobium confertum</i>			
753.	3956 <i>Gompholobium shuttleworthii</i>			
754.	3957 <i>Gompholobium tomentosum (Hairy Yellow Pea)</i>			
755.	6159 <i>Gonocarpus nodulosus</i>			
756.	6161 <i>Gonocarpus pithyoides</i>			
757.	12551 <i>Goodenia micrantha</i>			
758.	7538 <i>Goodenia pulchella</i>			
759.	19286 <i>Goodenia pulchella subsp. Coastal Plain A (M. Hislop 634)</i>			
760.	19284 <i>Goodenia pulchella subsp. Coastal Plain B (L.W. Sage 2336)</i>			
761.	26876 <i>Gracilaria verrucosa</i>			
762.	24443 <i>Grallina cyanoleuca (Magpie-lark)</i>			
763.	37500 <i>Grammatotheca bergiana var. bergiana</i>	Y		
764.	14282 <i>Gratiola pubescens</i>			
765.	1964 <i>Grevillea bipinnatifida (Fuchsia Grevillea)</i>			
766.	19628 <i>Grevillea bipinnatifida subsp. bipinnatifida</i>			
767.	1982 <i>Grevillea crithmifolia</i>			
768.	1997 <i>Grevillea endlicheriana (Spindly Grevillea)</i>			
769.	2066 <i>Grevillea pilulifera (Woolly-flowered Grevillea)</i>			
770.	15839 <i>Grevillea preissii subsp. preissii</i>			
771.	14421 <i>Grevillea synapheae subsp. synapheae</i>			
772.	12824 <i>Grevillea vestita subsp. vestita</i>			
773.	<i>Gripopterygidae sp.</i>			
774.	<i>Gymnapistes marmoratus</i>			
775.	<i>Gymnopilus allantopus</i>			
776.	<i>Gymnopilus purpuratus</i>			
777.	2784 <i>Gyrostemon ramulosus (Corkybark)</i>			
778.	24487 <i>Haematopus longirostris (Pied Oystercatcher)</i>			
779.	1464 <i>Haemodorum brevisepalum</i>			
780.	1468 <i>Haemodorum laxum</i>			
781.	1470 <i>Haemodorum paniculatum (Mardja)</i>			
782.	1472 <i>Haemodorum simplex</i>			
783.	1475 <i>Haemodorum spicatum (Mardja)</i>			
784.	2136 <i>Hakea candolleana</i>			
785.	2137 <i>Hakea ceratophylla (Horned Leaf Hakea)</i>			
786.	2143 <i>Hakea conchifolia (Shell-leaved Hakea)</i>			
787.	2166 <i>Hakea incrassata (Marble Hakea)</i>			
788.	2175 <i>Hakea lissocarpha (Honey Bush)</i>			
789.	2197 <i>Hakea prostrata (Harsh Hakea)</i>			
790.	2203 <i>Hakea ruscifolia (Candle Hakea)</i>			
791.	31793 <i>Hakea sp. Eastern coastal plain (G.J. Keighery 8014)</i>			
792.	2212 <i>Hakea sulcata (Furrowed Hakea)</i>			
793.	2214 <i>Hakea trifurcata (Two-leaf Hakea)</i>			
794.	2216 <i>Hakea varia (Variable-leaved Hakea)</i>			
795.	24293 <i>Haliaeetus leucogaster (White-bellied Sea-Eagle)</i>			
796.	24295 <i>Haliastur sphenurus (Whistling Kite)</i>			
797.	24689 <i>Halobaena caerulea (Blue Petrel)</i>			

Name ID	Species Name	Naturalised	Conservation Code	¹ Endemic To Query Area
798.	26900 <i>Haloplegma preissii</i>			
799.	3961 <i>Hardenbergia comptoniana</i> (Native Wisteria)			
800.	38791 <i>Hebeloma crustuliniforme</i>			
801.	<i>Hebridae</i> sp.			
802.	25410 <i>Heleioporus eyrei</i> (Moaning Frog)			
803.	8008 <i>Helianthus annuus</i> (Sunflower, Common Sunflower)	Y		
804.	12016 <i>Helianthus debilis</i> subsp. <i>cucumerifolius</i>	Y		
805.	3016 <i>Heliophila pusilla</i>	Y		
806.	8084 <i>Helminthotheca echioides</i> (Ox-tongue, Prickly Ox-tongue)	Y		
807.	16933 <i>Hemiandra glabra</i>			
808.	6839 <i>Hemiandra pungens</i> (Snakebush)			
809.	<i>Hemicorduliidae</i> sp.			
810.	25475 <i>Hemiergis peronii</i>			
811.	25119 <i>Hemiergis quadrilineata</i>			
812.	41020 <i>Hemiphora bartlingii</i> (Woolly Dragon)			
813.	41042 <i>Hemiphora uncinata</i>			
814.	39034 <i>Hemitrichia calyculata</i>			
815.	<i>Henicops dentatus</i>			
816.	1293 <i>Hensmania turbinata</i>			
817.	1526 <i>Hesperantha falcata</i>	Y		
818.	24961 <i>Heteronotia binoei</i> (Bynoe's Gecko)			
819.	<i>Hexagonia vesparia</i>			
820.	5112 <i>Hibbertia aurea</i>			
821.	5114 <i>Hibbertia commutata</i>			
822.	5134 <i>Hibbertia huegelii</i>			
823.	5135 <i>Hibbertia hypericoides</i> (Yellow Buttercups)			
824.	45534 <i>Hibbertia hypericoides</i> subsp. <i>hypericoides</i>			
825.	5162 <i>Hibbertia racemosa</i> (Stalked Guinea Flower)			
826.	5172 <i>Hibbertia stellaris</i> (Orange Stars)			
827.	48381 <i>Hibbertia striata</i>			
828.	5173 <i>Hibbertia subvaginata</i>			
829.	5176 <i>Hibbertia vaginata</i>			
830.	4926 <i>Hibiscus diversifolius</i>	Y		Y
831.	48241 <i>Hibiscus diversifolius</i> subsp. <i>diversifolius</i>	Y		
832.	47965 <i>Hieraaetus morphnoides</i> (Little Eagle)			
833.	25734 <i>Himantopus himantopus</i> (Black-winged Stilt)			
834.	24491 <i>Hirundo neoxena</i> (Welcome Swallow)			
835.	<i>Histrio histrio</i>			
836.	<i>Hogna crispipes</i>			
837.	<i>Hogna immansueta</i>			
838.	444 <i>Holcus lanatus</i> (Yorkshire Fog)	Y		
839.	<i>Holocnemus pluchei</i>			
840.	448 <i>Hordeum glaucum</i> (Northern Barley Grass)	Y		
841.	449 <i>Hordeum leporinum</i> (Barley Grass)	Y		
842.	450 <i>Hordeum marinum</i>	Y		
843.	3966 <i>Hovea pungens</i> (Devil's Pins, Puyenak)			
844.	3968 <i>Hovea trisperma</i> (Common Hovea)			
845.	12741 <i>Hyalosperma cotula</i>			
846.	5216 <i>Hybanthus calycinus</i> (Wild Violet)			
847.	166 <i>Hydrilla verticillata</i> (Water Thyme)			
848.	6223 <i>Hydrocotyle alata</i>			
849.	6226 <i>Hydrocotyle callicarpa</i> (Small Pennywort)			
850.	6229 <i>Hydrocotyle diantha</i>			
851.	6238 <i>Hydrocotyle ranunculoides</i>	Y		
852.	<i>Hydrophilidae</i> sp.			
853.	<i>Hygrocybe polychroma</i>			
854.	452 <i>Hyparrhenia hirta</i> (Tambookie Grass)	Y		
855.	5180 <i>Hypericum gramineum</i> (Small St John's Wort)			
856.	5817 <i>Hypocalymma angustifolium</i> (White Myrtle, Kudjid)			
857.	8086 <i>Hypochaeris glabra</i> (Smooth Catsear)	Y		
858.	9352 <i>Hypochaeris radicata</i> (Flat Weed, Cats-ear)	Y		
859.	1070 <i>Hypolaena exsulca</i>			
860.	17841 <i>Hypolaena pubescens</i>			
861.	<i>Idiommata blackwalli</i>			
862.	<i>Idiosoma hirsutum</i>			
863.	48492 <i>Inocybe campestris</i>			
864.	40869 <i>Inocybe curvipes</i>	Y		
865.	48524 <i>Inocybe gomphocephala</i>			
866.	48552 <i>Inocybe tomentipes</i>			
867.	38799 <i>Inocybe violaceoaulis</i>			

Name ID	Species Name	Naturalised	Conservation Code	¹ Endemic To Query Area
868.	6620 <i>Ipomoea cairica</i> (Coast Morning Glory)	Y		
869.	6630 <i>Ipomoea indica</i> (Morning Glory)	Y		
870.	11 <i>Isoetes drummondii</i> (Quillwort)			
871.	20199 <i>Isolepis cernua</i> var. <i>cernua</i>			
872.	20200 <i>Isolepis cernua</i> var. <i>setiformis</i>			
873.	912 <i>Isolepis cyperoides</i>			
874.	917 <i>Isolepis marginata</i> (Coarse Club-rush)			
875.	919 <i>Isolepis oldfieldiana</i>			
876.	10831 <i>Isolepis prolifera</i> (Budding Club-rush)	Y		
877.	924 <i>Isolepis stellata</i> (Star Club-rush)			
878.	<i>Isometroides vescus</i>			
879.	<i>Isopeda leishmanni</i>			
880.	<i>Isopedella cana</i>			
881.	2221 <i>Isopogon asper</i>			
882.	2229 <i>Isopogon dubius</i> (Pincushion Coneflower)			
883.	7396 <i>Isotoma hypocrateriformis</i> (Woodbridge Poison)			
884.	7398 <i>Isotoma pusilla</i> (Small Isotome)			
885.	7399 <i>Isotoma scapigera</i> (Long-scaped Isotome)			
886.	19700 <i>Isotropis cuneifolia</i> subsp. <i>cuneifolia</i>			
887.	1532 <i>Ixia maculata</i> (Yellow Ixia)	Y		
888.	<i>Ixodes tasmani</i>			Y
889.	3998 <i>Jacksonia angulata</i>			
890.	4010 <i>Jacksonia floribunda</i> (Holly Pea)			
891.	4012 <i>Jacksonia furcellata</i> (Grey Stinkwood)			
892.	4018 <i>Jacksonia lehmannii</i>			
893.	4029 <i>Jacksonia sternbergiana</i> (Stinkwood, Kapur)			
894.	1298 <i>Johnsonia pubescens</i> (Pipe Lily)			
895.	19632 <i>Johnsonia pubescens</i> subsp. <i>pubescens</i>			
896.	1175 <i>Juncus acutus</i> (Spiny Rush)	Y		
897.	20454 <i>Juncus acutus</i> subsp. <i>acutus</i>	Y		
898.	1178 <i>Juncus bufonius</i> (Toad Rush)	Y		
899.	1180 <i>Juncus capitatus</i> (Capitate Rush)	Y		
900.	1184 <i>Juncus holoschoenus</i> (Jointleaf Rush)			
901.	11922 <i>Juncus kraussii</i> subsp. <i>australiensis</i>			
902.	1186 <i>Juncus microcephalus</i>	Y		
903.	1187 <i>Juncus oxycarpus</i>	Y		
904.	1188 <i>Juncus pallidus</i> (Pale Rush)			
905.	1189 <i>Juncus pauciflorus</i> (Loose Flower Rush)			
906.	1196 <i>Juncus usitatus</i> (Common Rush)	Y		
907.	<i>Kangarosa properipes</i>			
908.	<i>Karaops jarrit</i>			
909.	4037 <i>Kennedia coccinea</i> (Coral Vine)			
910.	4044 <i>Kennedia prostrata</i> (Scarlet Runner)			
911.	7068 <i>Kickxia spuria</i> (Roundleaf Toadflax)	Y		
912.	1221 <i>Kingia australis</i> (Kingia, Pulongok)			
913.	5835 <i>Kunzea micrantha</i>			
914.	3669 <i>Labichea punctata</i> (Lance-leaved Cassia)			
915.	4046 <i>Lablab purpureus</i> (Lablab Bean)	Y		
916.	16091 <i>Lachenalia bulbifera</i>	Y		
917.	1370 <i>Lachenalia reflexa</i>	Y		
918.	20019 <i>Lachnagrostis filiformis</i>			
919.	19955 <i>Lachnagrostis plebeia</i>			
920.	38803 <i>Lachnum virgineum</i>			
921.	8095 <i>Lactuca saligna</i> (Wild Lettuce, Willow-leaf Lettuce)	Y		
922.	8096 <i>Lactuca serriola</i> (Prickly Lettuce)	Y		
923.	29046 <i>Lactuca serriola</i> forma <i>serriola</i>	Y		
924.	<i>Laetiporus portentosus</i>			
925.	14646 <i>Lagunaria patersonia</i>	Y		
926.	24367 <i>Lalage tricolor</i> (White-winged Triller)			
927.	2249 <i>Lambertia multiflora</i> (Many-flowered Honeysuckle)			
928.	14083 <i>Lambertia multiflora</i> var. <i>darlingensis</i>			
929.	<i>Lampona cylindrata</i>			
930.	28342 <i>Landoltia punctata</i> (Thin Duckweed)			
931.	25637 <i>Larus novaehollandiae</i> (Silver Gull)			
932.	24511 <i>Larus novaehollandiae</i> subsp. <i>novaehollandiae</i> (Silver Gull)			
933.	4052 <i>Latrobea tenella</i>			
934.	<i>Latrodectus hasseltii</i>			
935.	13284 <i>Lawrencella rosea</i>			
936.	4959 <i>Lawrencia squamata</i>			
937.	11815 <i>Laxmannia grandiflora</i> subsp. <i>grandiflora</i>			

Name ID	Species Name	Naturalised	Conservation Code	¹ Endemic To Query Area
938.	11911 <i>Laxmannia ramosa</i> subsp. <i>ramosa</i>			
939.	11464 <i>Laxmannia sessiliflora</i> subsp. <i>australis</i>			
940.	1309 <i>Laxmannia squarrosa</i>			
941.	7568 <i>Lechenaultia biloba</i> (<i>Blue Leschenaultia</i>)			
942.	7572 <i>Lechenaultia expansa</i>			
943.	7574 <i>Lechenaultia floribunda</i> (<i>Free-flowering Leschenaultia</i>)			
944.	1051 <i>Lemna disperma</i> (<i>Duckweed</i>)			
945.	38805 <i>Lentinellus pulvinulus</i>			
946.	39038 <i>Leocarpus fragilis</i>			
947.	44490 <i>Leontodon rhagadioloides</i>	Y		
948.	8099 <i>Leontodon saxatilis</i> (<i>Hairy Hawkbit</i>)	Y		
949.	19989 <i>Lepidium didymum</i>	Y		
950.	18074 <i>Lepidobolus preissianus</i> subsp. <i>preissianus</i>			
951.	41620 <i>Lepidosperma asperatum</i>			
952.	937 <i>Lepidosperma longitudinale</i> (<i>Pithy Sword-sedge</i>)			
953.	940 <i>Lepidosperma pubisquamum</i>			
954.	944 <i>Lepidosperma scabrum</i>			
955.	<i>Lepidosperma</i> sp.			
956.	946 <i>Lepidosperma striatum</i>			
957.	1653 <i>Leporella fimbriata</i> (<i>Hare Orchid</i>)			
958.	32398 <i>Leptobryum pyriforme</i>			
959.	1077 <i>Leptocarpus canus</i> (<i>Hoary Twine-rush</i>)			
960.	1078 <i>Leptocarpus coangustus</i>			
961.	46375 <i>Leptocarpus decipiens</i>			
962.	46380 <i>Leptocarpus kraussii</i>			
963.	46382 <i>Leptocarpus roycei</i>			
964.	<i>Leptoceridae</i> sp.			
965.	2344 <i>Leptomeria empetriformis</i>			
966.	2350 <i>Leptomeria pauciflora</i> (<i>Sparse-flowered Currant Bush</i>)			
967.	1085 <i>Lepyrodia glauca</i>			
968.	1088 <i>Lepyrodia macra</i> (<i>Large Scale Rush</i>)			
969.	1090 <i>Lepyrodia muirii</i>			
970.	25133 <i>Lerista elegans</i>			
971.	25148 <i>Lerista lineopunctulata</i>			
972.	25165 <i>Lerista praepedita</i>			
973.	6374 <i>Leucopogon conostephioides</i>			
974.	6434 <i>Leucopogon polymorphus</i>			
975.	6436 <i>Leucopogon propinquus</i>			
976.	6439 <i>Leucopogon pulchellus</i> (<i>Beard-heath</i>)			
977.	6440 <i>Leucopogon racemosus</i>			
978.	6444 <i>Leucopogon sprengelioides</i>			
979.	40803 <i>Leucopogon squarrosus</i> subsp. <i>squarrosus</i>			
980.	6447 <i>Leucopogon strictus</i>			
981.	6454 <i>Leucopogon verticillatus</i> (<i>Tassel Flower</i>)			
982.	7674 <i>Levenhookia preissii</i> (<i>Preiss's Stylewort</i>)			
983.	7677 <i>Levenhookia stipitata</i> (<i>Common Stylewort</i>)			
984.	25005 <i>Lialis burtonis</i>			
985.	25659 <i>Lichenostomus leucotis</i> (<i>White-eared Honeyeater</i>)			
986.	25661 <i>Lichmera indistincta</i> (<i>Brown Honeyeater</i>)			
987.	24582 <i>Lichmera indistincta</i> subsp. <i>indistincta</i> (<i>Brown Honeyeater</i>)			
988.	38808 <i>Limacella pitereka</i>			
989.	25415 <i>Limnodynastes dorsalis</i> (<i>Western Banjo Frog</i>)			
990.	7075 <i>Linaria maroccana</i>	Y		
991.	4363 <i>Linum trigynum</i> (<i>French Flax</i>)	Y		
992.	36160 <i>Liparophyllum capitatum</i>			
993.	25378 <i>Litoria adelaidensis</i> (<i>Slender Tree Frog</i>)			
994.	25388 <i>Litoria moorei</i> (<i>Motorbike Frog</i>)			
995.	9289 <i>Lobelia anceps</i> (<i>Angled Lobelia</i>)			
996.	7402 <i>Lobelia gibbosa</i> (<i>Tall Lobelia</i>)			
997.	7406 <i>Lobelia rhombifolia</i> (<i>Tufted Lobelia</i>)			
998.	7407 <i>Lobelia rhytidosperra</i> (<i>Wrinkled-seeded Lobelia</i>)			
999.	7408 <i>Lobelia tenuior</i> (<i>Slender Lobelia</i>)			
1000.	3048 <i>Lobularia maritima</i> (<i>Sweet Alyssum</i>)	Y		
1001.	8682 <i>Lolium lolia</i> (<i>Stiff Ryegrass</i>)	Y		
1002.	475 <i>Lolium multiflorum</i> (<i>Italian Ryegrass</i>)	Y		
1003.	476 <i>Lolium perenne</i> (<i>Perennial Ryegrass</i>)	Y		
1004.	10957 <i>Lolium perenne</i> x <i>rigidum</i>	Y		
1005.	477 <i>Lolium remotum</i> (<i>Hardy Ryegrass</i>)	Y		
1006.	478 <i>Lolium rigidum</i> (<i>Wimmera Ryegrass</i>)	Y		
1007.	11766 <i>Lolium temulentum</i> forma <i>arvense</i>	Y		

Name ID	Species Name	Naturalised	Conservation Code	¹ Endemic To Query Area
1008.	11384 <i>Lolium temulentum forma temulentum</i>	Y		
1009.	11073 <i>Lolium x hybridum</i>	Y		
1010.	1223 <i>Lomandra caespitosa (Tufted Mat Rush)</i>			
1011.	1228 <i>Lomandra hermaphrodita</i>			
1012.	1231 <i>Lomandra maritima</i>			
1013.	14542 <i>Lomandra micrantha subsp. micrantha</i>			
1014.	1234 <i>Lomandra nigricans</i>			
1015.	1236 <i>Lomandra odora (Tiered Matrush)</i>			
1016.	1239 <i>Lomandra preissii</i>			
1017.	1240 <i>Lomandra purpurea (Purple Mat Rush)</i>			
1018.	1243 <i>Lomandra sericea (Silky Mat Rush)</i>			
1019.	1246 <i>Lomandra suaveolens</i>			
1020.	<i>Longepi woodman</i>			
1021.	<i>Lophoictinia isura</i>			
1022.	8564 <i>Lotus subbiflorus</i>	Y		
1023.	4063 <i>Lotus uliginosus (Greater Lotus)</i>	Y		
1024.	42414 <i>Lucasium alboguttatum</i>			
1025.	44680 <i>Ludwigia repens</i>	Y		
1026.	4066 <i>Lupinus cosentinii</i>	Y		
1027.	4067 <i>Lupinus luteus (Yellow Lupin)</i>	Y		
1028.	39048 <i>Lycogala epidendrum</i>			
1029.	<i>Lycosa ariadnae</i>			
1030.	<i>Lycosa gilberta</i>			
1031.	<i>Lycosa godeffroyi</i>			
1032.	1097 <i>Lyginia barbata</i>			
1033.	18049 <i>Lyginia imberbis</i>			
1034.	2396 <i>Lysiana casuarinae</i>			
1035.	36375 <i>Lysimachia arvensis (Pimpernel)</i>	Y		
1036.	36373 <i>Lysimachia minima</i>	Y		
1037.	6456 <i>Lysinema ciliatum (Curry Flower)</i>			
1038.	34736 <i>Lysinema pentapetalum</i>			
1039.	5281 <i>Lythrum hyssopifolia (Lesser Loosestrife)</i>	Y		
1040.	2839 <i>Macarthuria australis</i>			
1041.	4070 <i>Macroptilium atropurpureum (Purple Bean)</i>	Y		
1042.	24326 <i>Malacorhynchus membranaceus (Pink-eared Duck)</i>			
1043.	25651 <i>Malurus lamberti (Variegated Fairy-wren)</i>			
1044.	25652 <i>Malurus leucopterus (White-winged Fairy-wren)</i>			
1045.	25654 <i>Malurus splendens (Splendid Fairy-wren)</i>			
1046.	36522 <i>Malva pseudolavatera</i>	Y		
1047.	24583 <i>Manorina flavigula (Yellow-throated Miner)</i>			
1048.	<i>Maratus pavonis</i>			
1049.	<i>Marchantia berteroana</i>			
1050.	31237 <i>Mauranthemum paludosum</i>	Y		
1051.	4079 <i>Medicago polymorpha (Burr Medic)</i>	Y		
1052.	4080 <i>Medicago sativa (Alfalfa)</i>	Y		
1053.	25758 <i>Megalurus gramineus (Little Grassbird)</i>			
1054.	20639 <i>Megathyrus maximus var. maximus</i>	Y		
1055.	37580 <i>Melaleuca acutifolia</i>			
1056.	5881 <i>Melaleuca brevifolia</i>			
1057.	40780 <i>Melaleuca citrina</i>	Y		
1058.	13271 <i>Melaleuca huegelii subsp. huegelii</i>			
1059.	13273 <i>Melaleuca incana subsp. incana</i>			
1060.	5922 <i>Melaleuca lanceolata (Rottnest Teatree, Moonah)</i>			
1061.	5926 <i>Melaleuca lateritia (Robin Redbreast Bush)</i>			
1062.	20297 <i>Melaleuca osullivanii</i>			
1063.	18394 <i>Melaleuca parviceps</i>			
1064.	5946 <i>Melaleuca pauciflora</i>			
1065.	5952 <i>Melaleuca preissiana (Moonah)</i>			
1066.	5959 <i>Melaleuca raphiophylla (Swamp Paperbark)</i>			
1067.	5961 <i>Melaleuca scabra (Rough Honey Myrtle, Wurru Bush)</i>			
1068.	5964 <i>Melaleuca seriata</i>			
1069.	18598 <i>Melaleuca systema</i>			
1070.	5978 <i>Melaleuca teretifolia (Banbar)</i>			
1071.	5983 <i>Melaleuca trichophylla</i>			
1072.	5987 <i>Melaleuca viminea (Mohan)</i>			
1073.	13280 <i>Melaleuca viminea subsp. viminea</i>			
1074.	47997 <i>Melanodryas cucullata (Hooded Robin)</i>			
1075.	4516 <i>Melia azedarach (White Cedar)</i>			
1076.	4084 <i>Melilotus albus</i>	Y		
1077.	4085 <i>Melilotus indicus</i>	Y		

Name ID	Species Name	Naturalised	Conservation Code	¹ Endemic To Query Area
1078.	14985 <i>Melinis repens</i>	Y		
1079.	25663 <i>Melithreptus brevirostris</i> (Brown-headed Honeyeater)			
1080.	24586 <i>Melithreptus brevirostris</i> subsp. <i>leucogenys</i> (Brown-headed Honeyeater)			
1081.	24587 <i>Melithreptus chloropsis</i> (Western White-naped Honeyeater)			
1082.	24736 <i>Melopsittacus undulatus</i> (Budgerigar)			
1083.	25184 <i>Menetia greyii</i>			
1084.	15994 <i>Mentha x piperita</i> var. <i>citrata</i>	Y		
1085.	24598 <i>Merops ornatus</i> (Rainbow Bee-eater)			
1086.	955 <i>Mesomelaena pseudostygia</i>			
1087.	957 <i>Mesomelaena tetragona</i> (Semaphore Sedge)			
1088.	<i>Microcanthus strigatus</i>			
1089.	<i>Microcarbo melanoleucos</i>			
1090.	1658 <i>Microtis atrata</i> (Swamp Mignonette Orchid)			
1091.	10954 <i>Microtis media</i> (Tall Mignonette Orchid)			
1092.	15419 <i>Microtis media</i> subsp. <i>media</i>			
1093.	4100 <i>Mirbelia spinosa</i>			
1094.	7085 <i>Misopates orontium</i> (Lesser Snapdragon)	Y		
1095.	<i>Missulena granulosa</i>			
1096.	<i>Missulena occatoria</i>			
1097.	<i>Mituliodon tarantulinus</i>			
1098.	7378 <i>Momordica balsamina</i> (Balsam Apple)	Y		
1099.	29418 <i>Monoculus monstrosus</i>	Y		
1100.	37440 <i>Monopsis debilis</i> var. <i>depressa</i>	Y		
1101.	4662 <i>Monotaxis grandiflora</i> (Diamond of the Desert)			
1102.	19585 <i>Monotaxis grandiflora</i> var. <i>grandiflora</i>			
1103.	19179 <i>Moraea flaccida</i> (One-leaf Cape Tulip)	Y		
1104.	19178 <i>Moraea lewisiae</i>	Y		
1105.	19438 <i>Moraea ochroleuca</i>	Y		
1106.	19177 <i>Moraea setifolia</i>	Y		
1107.	<i>Morchella elata</i>			
1108.	25240 <i>Morelia spilota</i> subsp. <i>imbricata</i> (Carpet Python)			
1109.	25191 <i>Morethia lineoocellata</i>			
1110.	25192 <i>Morethia obscura</i>			
1111.	24223 <i>Mus musculus</i> (House Mouse)	Y		
1112.	24042 <i>Mustela putorius</i> (European Polecat, Ferret)	Y		
1113.	38811 <i>Mycena clarkeana</i>			
1114.	25610 <i>Myiagra inquieta</i> (Restless Flycatcher)			
1115.	25420 <i>Myobatrachus gouldii</i> (Turtle Frog)			
1116.	7289 <i>Myoporum caprarioides</i> (Slender Myoporum)			
1117.	14187 <i>Myriocephalus occidentalis</i>			
1118.	6189 <i>Myriophyllum crispatum</i>			
1119.	6199 <i>Myriophyllum tillaeoides</i>			
1120.	<i>Nannoperca vittata</i>			
1121.	44494 <i>Narcissus tazetta</i> subsp. <i>aureus</i>	Y		
1122.	44495 <i>Narcissus tazetta</i> subsp. <i>tazetta</i>	Y		
1123.	6464 <i>Needhamiella pumilio</i>			
1124.	25248 <i>Neelaps bimaculatus</i> (Black-naped Snake)			
1125.	24738 <i>Neophema elegans</i> (Elegant Parrot)			
1126.	24739 <i>Neophema petrophila</i> (Rock Parrot)			
1127.	<i>Nephila edulis</i>			
1128.	492 <i>Neurachne alopecuroidea</i> (Foxtail Mulga Grass)			
1129.	<i>Nicodamus mainae</i>			
1130.	6974 <i>Nicotiana glauca</i> (Tree Tobacco)	Y		
1131.	25252 <i>Notechis scutatus</i> (Tiger Snake)			
1132.	1381 <i>Nothoscordum gracile</i>	Y		
1133.	<i>Notiasemus glauerti</i>			
1134.	<i>Notolabrus parilus</i>			
1135.	2401 <i>Nuytsia floribunda</i> (Christmas Tree, Mudja)			
1136.	25564 <i>Nycticorax caledonicus</i> (Rufous Night Heron)			
1137.	2923 <i>Nymphaea odorata</i> (Fragrant Waterlily)	Y		
1138.	24742 <i>Nymphicus hollandicus</i> (Cockatiel)			
1139.	44784 <i>Ocimum americanum</i>	Y		
1140.	<i>Ocrisiona leucocomis</i>			
1141.	24407 <i>Ocyphaps lophotes</i> (Crested Pigeon)			
1142.	<i>Oecobius navus</i>			
1143.	16390 <i>Oenothera drummondii</i> subsp. <i>drummondii</i>	Y		
1144.	6139 <i>Oenothera glazioviana</i> (Evening Primrose)	Y		
1145.	20052 <i>Oenothera jamesii</i>	Y		
1146.	16347 <i>Oenothera laciniata</i>	Y		
1147.	6140 <i>Oenothera mollissima</i>	Y		

Name ID	Species Name	Naturalised	Conservation Code	¹ Endemic To Query Area
1148.	6141 <i>Oenothera speciosa</i> (White Evening Primrose)	Y		
1149.	6142 <i>Oenothera stricta</i> (Common Evening Primrose)	Y		
1150.	14292 <i>Oenothera stricta</i> subsp. <i>stricta</i>	Y		
1151.	8127 <i>Olearia axillaris</i> (Coastal Daisybush)			
1152.	8133 <i>Olearia elaeophila</i>			
1153.	8143 <i>Olearia paucidentata</i> (Autumn Scrub Daisy)			
1154.	8149 <i>Olearia rudis</i> (Rough Daisybush)			
1155.	<i>Oligochaeta</i> sp.			
1156.	39054 <i>Oligonema schweinitzii</i>			
1157.	<i>Ommatoiulus moreleti</i>			
1158.	<i>Ommatoiulus moreletii</i>			
1159.	38816 <i>Omphalotus nidiformis</i>			
1160.	18255 <i>Opecularia vaginata</i> (Dog Weed)			
1161.	<i>Ophisurus serpens</i>			
1162.	29276 <i>Opuntia monacantha</i> (Barbary Fig)	Y		
1163.	<i>Oratemnus curtus</i>			
1164.	<i>Orectolobus ornatus</i>			
1165.	36177 <i>Ornduffia albiflora</i>			
1166.	4113 <i>Ornithopus compressus</i> (Yellow Serradella)	Y		
1167.	4115 <i>Ornithopus sativus</i> (French Serradella)	Y		
1168.	7122 <i>Orobanche minor</i> (Lesser Broomrape)	Y		
1169.	<i>Orthocladinae</i> sp.			
1170.	24085 <i>Oryctolagus cuniculus</i> (Rabbit)	Y		
1171.	<i>Ostearius melanopygius</i>			
1172.	168 <i>Ottelia ovalifolia</i> (Swamp Lily)			
1173.	14531 <i>Ottelia ovalifolia</i> subsp. <i>ovalifolia</i>			
1174.	4348 <i>Oxalis caprina</i>	Y		
1175.	4349 <i>Oxalis corniculata</i> (Yellow Wood Sorrel)	Y		
1176.	18331 <i>Oxalis debilis</i> var. <i>corymbosa</i> (Pink Shamrock)	Y		
1177.	4352 <i>Oxalis glabra</i>	Y		
1178.	4356 <i>Oxalis pes-caprae</i> (Soursob)	Y		
1179.	4358 <i>Oxalis purpurea</i> (Largeflower Wood Sorrel)	Y		
1180.	4359 <i>Oxalis violacea</i> (Violet Wood Sorrel)	Y		
1181.	<i>Oxidus gracilis</i>			
1182.	25680 <i>Pachycephala rufiventris</i> (Rufous Whistler)			
1183.	24624 <i>Pachycephala rufiventris</i> subsp. <i>rufiventris</i> (Rufous Whistler)			
1184.	24693 <i>Pachyptila desolata</i> (Antarctic Prion)			
1185.	<i>Palaemonidae</i> sp.			
1186.	38817 <i>Panaeolus papilionaceus</i>			
1187.	2965 <i>Papaver rhoeas</i> (Field Poppy)	Y		
1188.	2966 <i>Papaver somniferum</i> (Opium Poppy)	Y		
1189.	<i>Papillogobius punctatus</i>			
1190.	23500 <i>Paracaleana hortiorum</i>			
1191.	17114 <i>Paraserianthes lophantha</i> subsp. <i>lophantha</i>			
1192.	25253 <i>Parasuta gouldii</i>			
1193.	25681 <i>Pardalotus punctatus</i> (Spotted Pardalote)			
1194.	24625 <i>Pardalotus punctatus</i> subsp. <i>punctatus</i> (Spotted Pardalote)			
1195.	25682 <i>Pardalotus striatus</i> (Striated Pardalote)			
1196.	24630 <i>Pardalotus striatus</i> subsp. <i>westraliensis</i> (Striated Pardalote)			
1197.	7089 <i>Parentucellia latifolia</i> (Common Bartsia)	Y		
1198.	7090 <i>Parentucellia viscosa</i> (Sticky Bartsia)	Y		
1199.	<i>Parma microlepis</i>			
1200.	19270 <i>Parthenocissus tricuspidata</i>	Y		Y
1201.	527 <i>Paspalum dilatatum</i>	Y		
1202.	528 <i>Paspalum distichum</i> (Water Couch)	Y		
1203.	532 <i>Paspalum urvillei</i> (Vasey Grass)	Y		
1204.	5225 <i>Passiflora filamentosa</i>	Y		
1205.	1546 <i>Patersonia juncea</i> (Rush Leaved Patersonia)			
1206.	1550 <i>Patersonia occidentalis</i> (Purple Flag, Koma)			
1207.	30472 <i>Patersonia occidentalis</i> var. <i>occidentalis</i>			
1208.	43765 <i>Pauridia glabella</i> var. <i>glabella</i>			
1209.	43760 <i>Pauridia occidentalis</i>			
1210.	43782 <i>Pauridia vaginata</i> var. <i>vaginata</i>			
1211.	<i>Pegasus volitans</i>			
1212.	24648 <i>Pelecanus conspicillatus</i> (Australian Pelican)			
1213.	<i>Pempheris klunzingeri</i>			
1214.	16477 <i>Pericalymma ellipticum</i> var. <i>ellipticum</i>			
1215.	16478 <i>Pericalymma ellipticum</i> var. <i>floridum</i>			
1216.	13911 <i>Persicaria decipiens</i>			
1217.	11020 <i>Persicaria hydropiper</i>			

Name ID	Species Name	Naturalised	Conservation Code	¹ Endemic To Query Area
1218.	16983 <i>Persicaria maculosa</i>	Y		
1219.	2262 <i>Persoonia elliptica</i> (Spreading Snottygobble)			
1220.	2273 <i>Persoonia saccata</i> (Snottygobble)			
1221.	48060 <i>Petrochelidon ariel</i> (Fairy Martin)			
1222.	48061 <i>Petrochelidon nigricans</i> (Tree Martin)			
1223.	48066 <i>Petroica boodang</i> (Scarlet Robin)			
1224.	24659 <i>Petroica goodenovii</i> (Red-capped Robin)			
1225.	2286 <i>Petrophile brevifolia</i>			
1226.	20391 <i>Petrophile juncifolia</i>			
1227.	2299 <i>Petrophile linearis</i> (Pixie Mops)			
1228.	2301 <i>Petrophile macrostachya</i>			
1229.	47240 <i>Petunia x atkinsiana</i>	Y		
1230.	<i>Peziza austrogeaster</i>			
1231.	<i>Peziza repanda</i>			
1232.	<i>Peziza</i> sp.			
1233.	38819 <i>Peziza vesiculosa</i>			
1234.	6669 <i>Phacelia tanacetifolia</i>	Y		
1235.	<i>Phaeotrametes decipiens</i>			
1236.	25697 <i>Phalacrocorax carbo</i> (Great Cormorant)			
1237.	25698 <i>Phalacrocorax melanoleucos</i> (Little Pied Cormorant)			
1238.	24666 <i>Phalacrocorax melanoleucos</i> subsp. <i>melanoleucos</i> (Little Pied Cormorant)			
1239.	24667 <i>Phalacrocorax sulcirostris</i> (Little Black Cormorant)			
1240.	25699 <i>Phalacrocorax varius</i> (Pied Cormorant)			
1241.	550 <i>Phalaris canariensis</i> (Canary Grass)	Y		
1242.	551 <i>Phalaris minor</i> (Lesser Canary Grass)	Y		
1243.	<i>Phalloceros caudimaculatus</i>			
1244.	24409 <i>Phaps chalcoptera</i> (Common Bronzewing)			
1245.	<i>Phellinus gilvus</i>			
1246.	18529 <i>Philotheca spicata</i> (Pepper and Salt)			
1247.	1172 <i>Philydrella drummondii</i>			
1248.	14306 <i>Philydrella pygmaea</i> subsp. <i>pygmaea</i>			
1249.	1478 <i>Phlebocarya ciliata</i>			
1250.	1479 <i>Phlebocarya filifolia</i>			
1251.	<i>Pholcus phalangioides</i>			
1252.	<i>Pholiota highlandensis</i>			
1253.	<i>Phreatoicidae</i> sp.			
1254.	<i>Phryganoporus candidus</i>			
1255.	<i>Phryganoporus gausapatus</i> subsp. <i>occidentalis</i>			Y
1256.	48071 <i>Phylidonyris niger</i> (White-cheeked Honeyeater)			
1257.	24596 <i>Phylidonyris novaehollandiae</i> (New Holland Honeyeater)			
1258.	4675 <i>Phyllanthus calycinus</i> (False Boronia)			
1259.	17794 <i>Phyllanthus tenellus</i>	Y		
1260.	4 <i>Phylloglossum drummondii</i> (Pigmy Clubmoss)			
1261.	38822 <i>Phylloporus clelandii</i>			
1262.	<i>Phyllopteryx taeniolatus</i>			
1263.	20652 <i>Physalis angulata</i>	Y		
1264.	6983 <i>Physalis peruviana</i> (Cape Gooseberry)	Y		
1265.	39073 <i>Physarum nudum</i>			Y
1266.	39074 <i>Physarum pusillum</i>			
1267.	<i>Physidae</i> sp.			
1268.	<i>Physocyclus globosus</i>			
1269.	2793 <i>Phytolacca octandra</i> (Red Ink Plant)	Y		
1270.	<i>Phytophthora cinnamomi</i>			
1271.	5232 <i>Pimelea argentea</i> (Silvery Leaved Pimelea)			
1272.	11404 <i>Pimelea imbricata</i> var. <i>major</i>			
1273.	11402 <i>Pimelea imbricata</i> var. <i>piligera</i>			
1274.	18117 <i>Pimelea rosea</i> subsp. <i>rosea</i>			
1275.	5264 <i>Pimelea spectabilis</i> (Bunjong)			
1276.	5268 <i>Pimelea sulphurea</i> (Yellow Banjine)			
1277.	5269 <i>Pimelea sylvestris</i>			
1278.	<i>Pisolithus albus</i>			
1279.	42281 <i>Pithocarpa cordata</i>			
1280.	11785 <i>Plantago coronopus</i> subsp. <i>commutata</i>	Y		
1281.	7304 <i>Plantago major</i> (Greater Plantain)	Y		
1282.	24841 <i>Platalea flavipes</i> (Yellow-billed Spoonbill)			
1283.	24842 <i>Platalea regia</i> (Royal Spoonbill)			
1284.	19512 <i>Platanus x hispanica</i>	Y		Y
1285.	<i>Platax teira</i>			
1286.	25720 <i>Platycercus icterotis</i> (Western Rosella)			
1287.	25721 <i>Platycercus zonarius</i> (Australian Ringneck, Ring-necked Parrot)			

Name ID	Species Name	Naturalised	Conservation Code	¹ Endemic To Query Area
1288.	6255 <i>Platysace juncea</i>			
1289.	4524 <i>Platytheca galioides</i>			
1290.	25007 <i>Pletholax gracilis subsp. gracilis</i> (Keeled Legless Lizard)			
1291.	65 <i>Pleurosorus rufifolius</i> (Blanket Fern)			
1292.	<i>Plotosus unicolor</i>			Y
1293.	38825 <i>Pluteus pauperculus</i>			
1294.	571 <i>Poa annua</i> (Winter Grass)	Y		
1295.	575 <i>Poa homomalla</i>			
1296.	578 <i>Poa porphyroclados</i>			
1297.	25703 <i>Podargus strigoides</i> (Tawny Frogmouth)			
1298.	24679 <i>Podargus strigoides subsp. brachypterus</i> (Tawny Frogmouth)			
1299.	25704 <i>Podiceps cristatus</i> (Great Crested Grebe)			
1300.	8173 <i>Podolepis capillaris</i> (Wiry Podolepis)			
1301.	8177 <i>Podolepis lessonii</i>			
1302.	8182 <i>Podotheca angustifolia</i> (Sticky Longheads)			
1303.	8183 <i>Podotheca chrysantha</i> (Yellow Podotheca)			
1304.	25510 <i>Pogona minor</i> (Dwarf Bearded Dragon)			
1305.	24907 <i>Pogona minor subsp. minor</i> (Dwarf Bearded Dragon)			
1306.	8188 <i>Pogonolepis stricta</i>			
1307.	24681 <i>Poliocephalus poliocephalus</i> (Hoary-headed Grebe)			
1308.	2905 <i>Polycarpon tetraphyllum</i> (Fourleaf Allseed)	Y		
1309.	2416 <i>Polygonum arenastrum</i> (Sand Wireweed)	Y		
1310.	2419 <i>Polygonum aviculare</i> (Wireweed)	Y		
1311.	582 <i>Polypogon monspeliensis</i> (Annual Beardgrass)	Y		
1312.	30854 <i>Polytelis anthopeplus subsp. westralis</i> (Regent Parrot)			
1313.	18323 <i>Populus alba</i>	Y		
1314.	44729 <i>Porostereum crassum</i>			
1315.	25731 <i>Porphyrio porphyrio</i> (Purple Swamphen)			
1316.	24767 <i>Porphyrio porphyrio subsp. bellus</i> (Purple Swamphen)			
1317.	24769 <i>Porzana fluminea</i> (Australian Spotted Crane)			
1318.	25732 <i>Porzana pusilla</i> (Baillon's Crane)			
1319.	24770 <i>Porzana pusilla subsp. palustris</i> (Baillon's Crane)			
1320.	24771 <i>Porzana tabuensis</i> (Spotless Crane)			
1321.	109 <i>Potamogeton crispus</i> (Curly Pondweed)			
1322.	1669 <i>Prasophyllum cyphochilum</i> (Pouched Leek Orchid)			
1323.	1670 <i>Prasophyllum drummondii</i> (Swamp Leek Orchid)			
1324.	1672 <i>Prasophyllum fimbria</i> (Fringed Leek Orchid)			
1325.	16688 <i>Prasophyllum gracile</i>			
1326.	1676 <i>Prasophyllum hians</i> (Yawning Leek Orchid)			
1327.	<i>Psephotus dissimilis</i>			Y
1328.	<i>Pseudocarax dentex</i>			
1329.	8189 <i>Pseudognaphalium luteoalbum</i> (Jersey Cudweed)			
1330.	<i>Pseudogobius olorum</i>			
1331.	24234 <i>Pseudomys delicatulus</i> (Delicate Mouse)			
1332.	25511 <i>Pseudonaja affinis</i> (Dugite)			
1333.	25259 <i>Pseudonaja affinis subsp. affinis</i> (Dugite)			
1334.	42416 <i>Pseudonaja mengdeni</i> (Western Brown Snake)			
1335.	25433 <i>Pseudophryne guentheri</i> (Crawling Toadlet)			
1336.	38830 <i>Psilocybe coprophila</i>			
1337.	<i>Psittacus erithacus</i>			Y
1338.	41651 <i>Pteridium esculentum subsp. esculentum</i>			
1339.	24702 <i>Pterodroma brevirostris</i> (Kerguelen Petrel)			
1340.	24703 <i>Pterodroma lessonii</i> (White-headed Petrel)			
1341.	15426 <i>Pterostylis aspera</i>			
1342.	1686 <i>Pterostylis barbata</i> (Bird Orchid)			
1343.	1687 <i>Pterostylis dilatata</i>			
1344.	44527 <i>Pterostylis erubescens</i>			
1345.	11118 <i>Pterostylis pyramidalis</i> (Snail Orchid)			
1346.	1693 <i>Pterostylis recurva</i> (Jug Orchid)			
1347.	12217 <i>Pterostylis sanguinea</i>			
1348.	<i>Pterostylis sp.</i>			
1349.	1698 <i>Pterostylis vittata</i> (Banded Greenhood)			
1350.	2716 <i>Ptilotus declinatus</i> (Curved Mulla Mulla)			
1351.	11260 <i>Ptilotus drummondii var. drummondii</i> (Pussytail)			
1352.	2720 <i>Ptilotus esquamatus</i>			
1353.	32417 <i>Ptychostomum angustifolium</i>			
1354.	4181 <i>Pultenaea reticulata</i>			
1355.	<i>Purpleicephalus spurius</i>			
1356.	25008 <i>Pygopus lepidopodus</i> (Common Scaly Foot)			
1357.	16367 <i>Pyrorchis nigricans</i> (Red beaks, Elephants ears)			

Name ID	Species Name	Naturalised	Conservation Code	¹ Endemic To Query Area
1358.	2933 <i>Ranunculus muricatus</i> (Sharp Buttercup)	Y		
1359.	11927 <i>Ranunculus sessiliflorus</i> var. <i>sessiliflorus</i>			
1360.	3061 <i>Raphanus raphanistrum</i> (Wild Radish)	Y		
1361.	24243 <i>Rattus fuscipes</i> (Western Bush Rat)			
1362.	24244 <i>Rattus norvegicus</i> (Brown Rat)	Y		
1363.	24245 <i>Rattus rattus</i> (Black Rat)	Y		
1364.	24776 <i>Recurvirostra novaehollandiae</i> (Red-necked Avocet)			
1365.	6012 <i>Regelia ciliata</i>			
1366.	3084 <i>Reseda lutea</i> (Cutleaf Mingnonette)	Y		
1367.	38832 <i>Resupinatus cinerascens</i>			
1368.	11341 <i>Rhagodia baccata</i> subsp. <i>baccata</i>			
1369.	48096 <i>Rhipidura albiscapa</i> (Grey Fantail)			
1370.	25614 <i>Rhipidura leucophrys</i> (Willie Wagtail)			
1371.	24454 <i>Rhipidura leucophrys</i> subsp. <i>leucophrys</i> (Willie Wagtail)			
1372.	38834 <i>Rhizopogon roseolus</i>			
1373.	13241 <i>Rhodanthe chlorocephala</i> subsp. <i>rosea</i>			
1374.	13234 <i>Rhodanthe manglesii</i>			
1375.	13312 <i>Rhodanthe pyrethrum</i>			
1376.	31911 <i>Ricinocarpos megalocarpus</i>			
1377.	19942 <i>Ricinocarpos undulatus</i>			
1378.	4705 <i>Ricinus communis</i> (Castor Oil Plant)	Y		
1379.	17020 <i>Robinia pseudoacacia</i>	Y		
1380.	45434 <i>Roldana petasitis</i>	Y		
1381.	1554 <i>Romulea flava</i>	Y		
1382.	14485 <i>Romulea flava</i> var. <i>minor</i>	Y		
1383.	11544 <i>Romulea rosea</i> var. <i>australis</i> (Guildford Grass)	Y		
1384.	14924 <i>Romulea rosea</i> var. <i>communis</i>	Y		
1385.	10970 <i>Rostraria cristata</i>	Y		
1386.	32429 <i>Rosulabryum torquescens</i>			
1387.	2429 <i>Rumex acetosella</i> (Sorrel)	Y		
1388.	2433 <i>Rumex crispus</i> (Curled Dock)	Y		
1389.	46434 <i>Rumex hypogaeus</i>	Y		
1390.	2443 <i>Rumex vesicarius</i> (Ruby Dock)	Y		
1391.	38836 <i>Russula erumpens</i>			
1392.	40425 <i>Rytidosperma caespitosum</i>			
1393.	40427 <i>Rytidosperma setaceum</i>			
1394.	2906 <i>Sagina apetala</i> (Annual Pearlwort)	Y		
1395.	2907 <i>Sagina procumbens</i> (Spreading Pearlwort)	Y		
1396.	17591 <i>Sagittaria platyphylla</i>	Y		
1397.	48430 <i>Salicornia quinqueflora</i>			
1398.	48431 <i>Salicornia quinqueflora</i> subsp. <i>quinqueflora</i> (Beaded Glasswort)			
1399.	6987 <i>Salpichroa origanifolia</i> (Pampas Lily of the Valley)	Y		
1400.	6928 <i>Salvia reflexa</i> (Mintweed)	Y		
1401.	6929 <i>Salvia verbenaca</i> (Wild Sage)	Y		
1402.	79 <i>Salvinia molesta</i> (Salvinia)	Y		
1403.	6483 <i>Samolus junceus</i>			
1404.	6484 <i>Samolus repens</i> (Creeping Brookweed)			
1405.	11647 <i>Samolus repens</i> var. <i>repens</i>			
1406.	7603 <i>Scaevola canescens</i> (Grey Scaevola)			
1407.	7613 <i>Scaevola glandulifera</i> (Viscid Hand-flower)			
1408.	7619 <i>Scaevola lanceolata</i> (Long-leaved Scaevola)			
1409.	13182 <i>Scaevola repens</i> var. <i>repens</i>			
1410.	11027 <i>Schinus terebinthifolius</i>	Y		
1411.	<i>Schizophyllum commune</i>			
1412.	6263 <i>Schoenolaena juncea</i>			
1413.	48356 <i>Schoenoplectus tabernaemontani</i>			
1414.	971 <i>Schoenus andrewsii</i>			
1415.	973 <i>Schoenus asperocarpus</i> (Poison Sedge)			
1416.	975 <i>Schoenus bifidus</i>			
1417.	978 <i>Schoenus brevisetis</i>			
1418.	979 <i>Schoenus caespititius</i>			
1419.	984 <i>Schoenus curvifolius</i>			
1420.	985 <i>Schoenus discifer</i>			
1421.	987 <i>Schoenus elegans</i>			
1422.	991 <i>Schoenus grammatophyllus</i>			
1423.	992 <i>Schoenus grandiflorus</i> (Large Flowered Bogrush)			
1424.	996 <i>Schoenus laevigatus</i>			
1425.	998 <i>Schoenus latitans</i>			
1426.	1007 <i>Schoenus pedicellatus</i>			
1427.	17614 <i>Schoenus plumosus</i>			

Name ID	Species Name	Naturalised	Conservation Code	¹ Endemic To Query Area
1428.	1011 <i>Schoenus rigens</i>			
1429.	1016 <i>Schoenus subbarbatus</i> (Bearded Bog-rush)			
1430.	1017 <i>Schoenus subbulbosus</i>			
1431.	1018 <i>Schoenus subfascicularis</i>			
1432.	6033 <i>Scholtzia involucrata</i> (Spiked Scholtzia)			
1433.	<i>Scleroderma cepa</i>			
1434.	<i>Scolopendra morsitans</i>			
1435.	<i>Scorpius aequipinnis</i>			
1436.	<i>Scorpius georgianus</i>			
1437.	32433 <i>Sematophyllum homomallum</i>			
1438.	25878 <i>Senecio condylus</i>			
1439.	20663 <i>Senecio multicaulis</i> subsp. <i>multicaulis</i>			
1440.	8218 <i>Senecio ramosissimus</i> (Auricled Groundsel)			
1441.	8220 <i>Senecio vulgaris</i> (Common Groundsel)	Y		
1442.	25534 <i>Sericornis frontalis</i> (White-browed Scrubwren)			
1443.	608 <i>Setaria italica</i> (Italian Millet)	Y		
1444.	609 <i>Setaria palmifolia</i> (Palm Grass)	Y		
1445.	611 <i>Setaria sphacelata</i> (South African Pigeon Grass)	Y		
1446.	2909 <i>Silene gallica</i> (French Catchfly)	Y		
1447.	15972 <i>Silene gallica</i> var. <i>gallica</i>	Y		
1448.	8224 <i>Siloxerus filifolius</i>			
1449.	8225 <i>Siloxerus humifusus</i> (Procumbent Siloxerus)			
1450.	25266 <i>Simoselaps bertholdi</i> (Jan's Banded Snake)			
1451.	<i>Simuliidae</i> sp.			
1452.	28060 <i>Siphula coriacea</i>			
1453.	3070 <i>Sisymbrium irio</i> (London Rocket)	Y		
1454.	3072 <i>Sisymbrium orientale</i> (Indian Hedge Mustard)	Y		
1455.	1557 <i>Sisyrinchium exile</i>	Y		
1456.	30948 <i>Smicromis brevirostris</i> (Weebill)			
1457.	<i>Sminthopsis murina</i>			
1458.	<i>Solaenodolichopus pruvoti</i>			
1459.	6990 <i>Solanum aviculare</i> (Kangaroo Apple)	Y		
1460.	11114 <i>Solanum giganteum</i>	Y		
1461.	7022 <i>Solanum nigrum</i> (Black Berry Nightshade)	Y		
1462.	9259 <i>Solanum nodiflorum</i> (Glossy Nightshade)	Y		
1463.	45036 <i>Solidago chilensis</i>	Y		
1464.	10920 <i>Soliva sessilis</i> (Jo-jo, Onehunga Weed)	Y		
1465.	8230 <i>Sonchus asper</i> (Rough Sowthistle)	Y		
1466.	8231 <i>Sonchus oleraceus</i> (Common Sowthistle)	Y		
1467.	616 <i>Sorghum bicolor</i> (Grain Sorghum)	Y		
1468.	35236 <i>Sorghum x drummondii</i> (Sudan Grass)	Y		
1469.	1312 <i>Sowerbaea laxiflora</i> (Purple Tassels)			
1470.	1558 <i>Sparaxis bulbifera</i>	Y		
1471.	2912 <i>Spergula arvensis</i> (Corn Spurry)	Y		
1472.	4205 <i>Sphaerolobium linophyllum</i>			
1473.	4207 <i>Sphaerolobium medium</i>			
1474.	8710 <i>Sporobolus africanus</i> (Parramatta Grass)	Y		
1475.	6930 <i>Stachys arvensis</i> (Staggerweed)	Y		
1476.	4716 <i>Stachystemon vermicularis</i>			
1477.	<i>Steatoda capensis</i>			
1478.	<i>Steatoda grossa</i>			
1479.	20397 <i>Stellaria pallida</i>	Y		
1480.	13475 <i>Stenanthemum humile</i>			
1481.	19403 <i>Stenopetalum gracile</i>			
1482.	38840 <i>Stereum hirsutum</i>			
1483.	24522 <i>Sterna bergii</i> (Crested Tern)			
1484.	24525 <i>Sterna fuscata</i> subsp. <i>nubilosa</i> (Sooty Tern)			
1485.	48594 <i>Sternula nereis</i> (Fairy Tern)			
1486.	24329 <i>Stictonetta naevosa</i> (Freckled Duck)			
1487.	2316 <i>Stirlingia latifolia</i> (Blueboy)			
1488.	2317 <i>Stirlingia simplex</i>			
1489.	<i>Storena formosa</i>			
1490.	25597 <i>Strepera versicolor</i> (Grey Currawong)			
1491.	25589 <i>Streptopelia chinensis</i> (Spotted Turtle-Dove)	Y		
1492.	30951 <i>Streptopelia chinensis</i> subsp. <i>tigrina</i> (Spotted Turtle-Dove)	Y		
1493.	25590 <i>Streptopelia senegalensis</i> (Laughing Turtle-Dove)	Y		
1494.	30950 <i>Streptopelia senegalensis</i> subsp. <i>senegalensis</i> (Laughing Turtle-Dove)	Y		
1495.	<i>Stropharia semiglobata</i>			
1496.	24943 <i>Strophurus spinigerus</i> subsp. <i>inornatus</i>			
1497.	24942 <i>Strophurus spinigerus</i> subsp. <i>spinigerus</i>			

Name ID	Species Name	Naturalised	Conservation Code	¹ Endemic To Query Area
1498.	44492 <i>Stuckenia pectinata</i>			
1499.	7684 <i>Stylidium amoenum</i> (Lovely Triggerplant)			
1500.	30278 <i>Stylidium androsaceum</i>			
1501.	30276 <i>Stylidium bicolor</i>			
1502.	7693 <i>Stylidium brunonianum</i> (Pink Fountain Triggerplant)			
1503.	7699 <i>Stylidium carnosum</i> (Fleshy-leaved Triggerplant)			
1504.	7710 <i>Stylidium cygnorum</i>			
1505.	7712 <i>Stylidium despectum</i> (Dwarf Triggerplant)			
1506.	7713 <i>Stylidium dichotomum</i> (Pins-and-needles)			
1507.	7716 <i>Stylidium diuroides</i> (Donkey Triggerplant)			
1508.	11808 <i>Stylidium diuroides</i> subsp. <i>diuroides</i>			
1509.	7717 <i>Stylidium divaricatum</i> (Daddy-long-legs)			
1510.	7734 <i>Stylidium guttatum</i> (Dotted Triggerplant)			
1511.	25829 <i>Stylidium neurophyllum</i> (Coastal Plain Triggerplant)			
1512.	7768 <i>Stylidium obtusatum</i> (Pinafore Triggerplant)			
1513.	7772 <i>Stylidium perpusillum</i> (Tiny Triggerplant)			
1514.	7773 <i>Stylidium petiolare</i> (Horn Triggerplant)			
1515.	7774 <i>Stylidium piliferum</i> (Common Butterfly Triggerplant)			
1516.	7781 <i>Stylidium pubigerum</i> (Yellow Butterfly Triggerplant)			
1517.	7782 <i>Stylidium pulchellum</i> (Thumbelina Triggerplant)			
1518.	7785 <i>Stylidium repens</i> (Matted Triggerplant)			
1519.	7790 <i>Stylidium roseoalatum</i> (Pink-wing Triggerplant)			
1520.	23511 <i>Stylidium thesioides</i> (Delicate Triggerplant)			
1521.	7806 <i>Stylidium utricularioides</i> (Pink Fan Triggerplant)			
1522.	1260 <i>Stypandra glauca</i> (Blind Grass)			
1523.	6476 <i>Styphelia tenuiflora</i> (Common Pinheath)			
1524.	2639 <i>Suaeda australis</i> (Seablite)			
1525.	<i>Sutorectus tentaculatus</i>			
1526.	25902 <i>Symphotrichum squamatum</i> (Bushy Starwort)	Y		
1527.	2321 <i>Synaphea acutiloba</i> (Granite Synaphea)			
1528.	2323 <i>Synaphea gracillima</i>			
1529.	2329 <i>Synaphea spinulosa</i>			
1530.	15532 <i>Synaphea spinulosa</i> subsp. <i>spinulosa</i>			
1531.	32437 <i>Syntrichia antarctica</i>			
1532.	32438 <i>Syntrichia pagorum</i>			
1533.	25705 <i>Tachybaptus novaehollandiae</i> (Australasian Grebe, Black-throated Grebe)			
1534.	24682 <i>Tachybaptus novaehollandiae</i> subsp. <i>novaehollandiae</i> (Australasian Grebe, Black-throated Grebe)			
1535.	24331 <i>Tadorna tadornoides</i> (Australian Shelduck, Mountain Duck)			
1536.	<i>Tamopsis facialis</i>			
1537.	<i>Tamopsis perthensis</i>			
1538.	38843 <i>Tapinella panuoides</i>			
1539.	45613 <i>Taraxacum khatoonae</i>	Y		
1540.	24167 <i>Tarsipes rostratus</i> (Honey Possum, Noolbenger)			
1541.	<i>Tasmanicosa leuckartii</i>			
1542.	20135 <i>Taxandria linearifolia</i>			
1543.	32440 <i>Tayloria octoblepharum</i>			
1544.	33236 <i>Tecticornia halocnemoides</i> (Shrubby Samphire)			
1545.	33237 <i>Tecticornia halocnemoides</i> subsp. <i>halocnemoides</i>			
1546.	33319 <i>Tecticornia indica</i> subsp. <i>bidens</i>			
1547.	31718 <i>Tecticornia lepidosperma</i>			
1548.	<i>Tegenaria atrica</i>			Y
1549.	4251 <i>Templetonia drummondii</i>			
1550.	<i>Tetragnatha demissa</i>			
1551.	1036 <i>Tetralia octandra</i>			
1552.	48342 <i>Tetralia hirsuta</i> subsp. <i>hirsuta</i>			
1553.	48341 <i>Tetralia hirsuta</i> subsp. <i>viminea</i>			
1554.	4537 <i>Tetralia nuda</i>			
1555.	1701 <i>Thelymitra antennifera</i> (Vanilla Orchid)			
1556.	10856 <i>Thelymitra benthamiana</i> (Leopard Orchid)			
1557.	1702 <i>Thelymitra campanulata</i> (Shirt Orchid)			
1558.	1705 <i>Thelymitra crinita</i> (Blue Lady Orchid)			
1559.	1707 <i>Thelymitra flexuosa</i> (Twisted Sun Orchid)			
1560.	<i>Thelymitra</i> sp.			
1561.	1715 <i>Thelymitra spiralis</i> (Curlylocks)			
1562.	1718 <i>Thelymitra villosa</i> (Custard Orchid)			
1563.	20731 <i>Thelymitra vulgaris</i>			
1564.	5080 <i>Thomasia foliosa</i>			
1565.	5084 <i>Thomasia grandiflora</i> (Large Flowered Thomasia)			
1566.	5087 <i>Thomasia macrocarpa</i> (Large Fruited Thomasia)			

Name ID	Species Name	Naturalised	Conservation Code	¹ Endemic To Query Area
1567.	17322 <i>Thomasia rulingioides</i>			
1568.	<i>Threpterus maculosus</i>			
1569.	24845 <i>Threskiornis spinicollis</i> (Straw-necked Ibis)			
1570.	1319 <i>Thysanotus arenarius</i>			
1571.	1320 <i>Thysanotus asper</i> (Hairy Fringe Lily)			
1572.	1338 <i>Thysanotus manglesianus</i> (Fringed Lily)			
1573.	1339 <i>Thysanotus multiflorus</i> (Many-flowered Fringe Lily)			
1574.	1343 <i>Thysanotus patersonii</i>			
1575.	46055 <i>Thysanotus</i> sp. Coastal plain (N.H. Brittan 66/63)			
1576.	1351 <i>Thysanotus sparteus</i>			
1577.	1354 <i>Thysanotus tenellus</i>			
1578.	1358 <i>Thysanotus triandrus</i>			
1579.	25203 <i>Tiliqua occipitalis</i> (Western Bluetongue)			
1580.	25204 <i>Tiliqua rugosa</i> subsp. <i>aspera</i>			
1581.	25207 <i>Tiliqua rugosa</i> subsp. <i>rugosa</i>			
1582.	45838 <i>Tilletia ehrhartae</i>			
1583.	<i>Tilodon sexfasciatum</i>			
1584.	<i>Tipulidae</i> sp.			
1585.	25549 <i>Todiramphus sanctus</i> (Sacred Kingfisher)			
1586.	24309 <i>Todiramphus sanctus</i> subsp. <i>sanctus</i> (Sacred Kingfisher)			
1587.	32445 <i>Tortula muralis</i>			
1588.	6268 <i>Trachymene cyanopetala</i>			
1589.	6279 <i>Trachymene omata</i> (Spongefruit)			
1590.	6280 <i>Trachymene pilosa</i> (Native Parsnip)			
1591.	38844 <i>Trametes versicolor</i>			
1592.	17684 <i>Tremulina tremula</i>			
1593.	11112 <i>Tribolium uniolae</i>	Y		
1594.	1481 <i>Tribonanthes australis</i>			
1595.	1482 <i>Tribonanthes brachypetala</i>			
1596.	1483 <i>Tribonanthes longipetala</i>			
1597.	1485 <i>Tribonanthes violacea</i>			
1598.	48141 <i>Tribonyx ventralis</i> (Black-tailed Native-hen)			
1599.	4383 <i>Tribulus terrestris</i> (Caltrop)	Y		
1600.	39094 <i>Trichia affinis</i>			
1601.	25723 <i>Trichoglossus haematodus</i> (Rainbow Lorikeet)			
1602.	24755 <i>Trichoglossus haematodus</i> subsp. <i>moluccanus</i> (Rainbow Lorikeet)	Y		
1603.	<i>Tricholomopsis rutilans</i>			
1604.	25521 <i>Trichosurus vulpecula</i> (Common Brushtail Possum)			
1605.	24158 <i>Trichosurus vulpecula</i> subsp. <i>vulpecula</i> (Common Brushtail Possum)			
1606.	1361 <i>Tricoryne elatior</i> (Yellow Autumn Lily)			
1607.	1362 <i>Tricoryne humilis</i>			
1608.	1363 <i>Tricoryne tenella</i>			
1609.	1038 <i>Tricostularia neesii</i>			
1610.	17145 <i>Trifolium angustifolium</i> var. <i>angustifolium</i>	Y		
1611.	17763 <i>Trifolium campestre</i> var. <i>campestre</i> (Hop Clover)	Y		
1612.	4294 <i>Trifolium cherleri</i> (Cupped Clover)	Y		
1613.	4295 <i>Trifolium dubium</i> (Suckling Clover)	Y		
1614.	4298 <i>Trifolium hirtum</i> (Rose Clover)	Y		
1615.	17758 <i>Trifolium hybridum</i> var. <i>hybridum</i>	Y		
1616.	34197 <i>Trifolium michelianum</i>	Y		Y
1617.	17788 <i>Trifolium pratense</i> var. <i>sativum</i>	Y		
1618.	17115 <i>Trifolium repens</i> var. <i>repens</i>	Y		
1619.	19970 <i>Trifolium resupinatum</i> var. <i>majus</i>	Y		
1620.	14738 <i>Trifolium resupinatum</i> var. <i>resupinatum</i>	Y		
1621.	4309 <i>Trifolium scabrum</i> (Rough Clover)	Y		
1622.	4310 <i>Trifolium spumosum</i> (Bladder Clover)	Y		
1623.	4313 <i>Trifolium subterraneum</i> (Subterranean Clover)	Y		
1624.	15509 <i>Trifolium tomentosum</i> var. <i>tomentosum</i>	Y		
1625.	146 <i>Triglochin minutissima</i>			
1626.	147 <i>Triglochin mucronata</i>			
1627.	148 <i>Triglochin muelleri</i>			
1628.	18587 <i>Triglochin nana</i>			
1629.	4737 <i>Tripterococcus brunonis</i> (Winged Stackhousia)			
1630.	1139 <i>Trithuria bibracteata</i>			
1631.	1141 <i>Trithuria submersa</i>			
1632.	4360 <i>Tropaeolum majus</i> (Garden Nasturtium)	Y		
1633.	<i>Trygonoptera ovalis</i>			
1634.	13479 <i>Trymalium ledifolium</i> var. <i>rosmarinifolium</i>			
1635.	33418 <i>Trymalium odoratissimum</i> subsp. <i>odoratissimum</i>			
1636.	38846 <i>Tubaria serrulata</i>			

Name ID	Species Name	Naturalised	Conservation Code	¹ Endemic To Query Area
1637.	24069 <i>Tursiops truncatus</i> (Bottlenose Dolphin)			
1638.	98 <i>Typha domingensis</i> (Bulrush, Djandjid)			
1639.	99 <i>Typha orientalis</i> (Bulrush, Cumbungi)			
1640.	24852 <i>Tyto alba subsp. delicatula</i> (Barn Owl)			
1641.	4317 <i>Ulex europaeus</i> (Gorse)	Y		
1642.	35262 <i>Ulva intestinalis</i>			
1643.	24983 <i>Underwoodisaurus millii</i> (Barking Gecko)			
1644.	<i>Urodacus novaehollandiae</i>			
1645.	<i>Uromycladium tepperianum</i>			
1646.	8254 <i>Urospermum picroides</i> (False Hawkbit)	Y		
1647.	38388 <i>Ursinia antheroides subsp. antheroides</i>	Y		
1648.	1767 <i>Urtica urens</i> (Small Nettle)	Y		
1649.	45895 <i>Ustilago avenae</i>			
1650.	45898 <i>Ustilago cynodontis</i>			
1651.	45899 <i>Ustilago hordei</i>			
1652.	12493 <i>Utricularia gibba</i>			
1653.	7138 <i>Utricularia inaequalis</i>			
1654.	7145 <i>Utricularia menziesii</i> (Redcoats)			
1655.	7148 <i>Utricularia multifida</i>			
1656.	7153 <i>Utricularia tenella</i>			
1657.	7157 <i>Utricularia violacea</i> (Violet Bladderwort)			
1658.	33537 <i>Vallisneria australis</i>	Y		
1659.	24386 <i>Vanellus tricolor</i> (Banded Lapwing)			
1660.	25218 <i>Varanus gouldii</i> (Bungarra or Sand Monitor)			
1661.	25526 <i>Varanus tristis</i> (Racehorse Monitor)			
1662.	7665 <i>Velleia trinervis</i>			
1663.	8257 <i>Vellereophyton dealbatum</i> (White Cudweed)	Y		
1664.	<i>Venator immansueta</i>			
1665.	<i>Venatrix pullastra</i>			
1666.	36096 <i>Verbena incompta</i> (Purple-top Verbena)	Y		
1667.	20121 <i>Verbena rigida</i> var. <i>rigida</i>	Y		
1668.	15725 <i>Verbesina encelioides</i>	Y		
1669.	7108 <i>Veronica arvensis</i> (Wall Speedwell)	Y		
1670.	15431 <i>Verticordia acerosa</i> var. <i>acerosa</i>			
1671.	12388 <i>Verticordia acerosa</i> var. <i>preissii</i>			
1672.	15432 <i>Verticordia densiflora</i> var. <i>densiflora</i>			
1673.	15433 <i>Verticordia huegelii</i> var. <i>huegelii</i>			
1674.	6101 <i>Verticordia nitens</i> (Morrison Featherflower, Kodjeningara)			
1675.	6107 <i>Verticordia pennigera</i>			
1676.	12449 <i>Verticordia plumosa</i> var. <i>brachyphylla</i>			
1677.	24206 <i>Vespadelus regulus</i> (Southern Forest Bat)			
1678.	4320 <i>Vicia hirsuta</i> (Hairy Vetch)	Y		
1679.	4322 <i>Vicia sativa</i> (Common Vetch)	Y		
1680.	17285 <i>Vicia sativa</i> subsp. <i>cordata</i>	Y		
1681.	11474 <i>Vicia sativa</i> subsp. <i>nigra</i>	Y		
1682.	12070 <i>Vicia sativa</i> subsp. <i>sativa</i>	Y		
1683.	4325 <i>Viminaria juncea</i> (Swishbush, Koweda)			
1684.	24040 <i>Vulpes vulpes</i> (Red Fox)	Y		
1685.	722 <i>Vulpia bromoides</i> (Squirrel Tail Fescue)	Y		
1686.	724 <i>Vulpia myuros</i> (Rat's Tail Fescue)	Y		
1687.	13328 <i>Waitzia nitida</i>			
1688.	1563 <i>Watsonia aletroides</i>	Y		Y
1689.	13103 <i>Watsonia borbonica</i>	Y		
1690.	1566 <i>Watsonia marginata</i>	Y		
1691.	18118 <i>Watsonia meriana</i> var. <i>meriana</i>	Y		
1692.	1569 <i>Watsonia versfeldii</i>	Y		
1693.	11798 <i>Wigandia urens</i> var. <i>caracasana</i>	Y		
1694.	6658 <i>Wilsonia backhousei</i> (Narrow-leaf Wilsonia)			
1695.	1394 <i>Wurmbea dioica</i> (Early Nancy)			
1696.	12072 <i>Wurmbea dioica</i> subsp. <i>alba</i>			
1697.	1398 <i>Wurmbea monantha</i>			
1698.	14544 <i>Xanthorrhoea brunonis</i> subsp. <i>brunonis</i>			
1699.	1256 <i>Xanthorrhoea preissii</i> (Grass tree, Palga)			
1700.	6289 <i>Xanthosia huegelii</i>			
1701.	2331 <i>Xylomelum occidentale</i> (Woody Pear, Djandin)			
1702.	<i>Xysticus periscelis</i>			Y
1703.	<i>Zebraplatys fractivittata</i>			
1704.	25765 <i>Zosterops lateralis</i> (Grey-breasted White-eye, Silvereye)			

Name	ID	Species Name	Naturalised	Conservation Code	¹ Endemic To Query Area
------	----	--------------	-------------	-------------------	------------------------------------

Conservation Codes
 T - Rare or likely to become extinct
 X - Presumed extinct
 IA - Protected under international agreement
 S - Other specially protected fauna
 1 - Priority 1
 2 - Priority 2
 3 - Priority 3
 4 - Priority 4
 5 - Priority 5

¹ For NatureMap's purposes, species flagged as endemic are those whose records are wholly contained within the search area. Note that only those records complying with the search criterion are included in the calculation. For example, if you limit records to those from a specific datasource, only records from that datasource are used to determine if a species is restricted to the query area.

APPENDIX 2

Protected Matters Search Tool Report



EPBC Act Protected Matters Report

This report provides general guidance on matters of national environmental significance and other matters protected by the EPBC Act in the area you have selected.

Information on the coverage of this report and qualifications on data supporting this report are contained in the caveat at the end of the report.

Information is available about [Environment Assessments](#) and the EPBC Act including significance guidelines, forms and application process details.

Report created: 01/11/18 18:34:15

[Summary](#)

[Details](#)

[Matters of NES](#)

[Other Matters Protected by the EPBC Act](#)

[Extra Information](#)

[Caveat](#)

[Acknowledgements](#)



This map may contain data which are
©Commonwealth of Australia
(Geoscience Australia), ©PSMA 2010

[Coordinates](#)

Buffer: 2.5Km



Summary

Matters of National Environmental Significance

This part of the report summarises the matters of national environmental significance that may occur in, or may relate to, the area you nominated. Further information is available in the detail part of the report, which can be accessed by scrolling or following the links below. If you are proposing to undertake an activity that may have a significant impact on one or more matters of national environmental significance then you should consider the [Administrative Guidelines on Significance](#).

World Heritage Properties:	None
National Heritage Places:	None
Wetlands of International Importance:	None
Great Barrier Reef Marine Park:	None
Commonwealth Marine Area:	None
Listed Threatened Ecological Communities:	1
Listed Threatened Species:	44
Listed Migratory Species:	25

Other Matters Protected by the EPBC Act

This part of the report summarises other matters protected under the Act that may relate to the area you nominated. Approval may be required for a proposed activity that significantly affects the environment on Commonwealth land, when the action is outside the Commonwealth land, or the environment anywhere when the action is taken on Commonwealth land. Approval may also be required for the Commonwealth or Commonwealth agencies proposing to take an action that is likely to have a significant impact on the environment anywhere.

The EPBC Act protects the environment on Commonwealth land, the environment from the actions taken on Commonwealth land, and the environment from actions taken by Commonwealth agencies. As heritage values of a place are part of the 'environment', these aspects of the EPBC Act protect the Commonwealth Heritage values of a Commonwealth Heritage place. Information on the new heritage laws can be found at <http://www.environment.gov.au/heritage>

A [permit](#) may be required for activities in or on a Commonwealth area that may affect a member of a listed threatened species or ecological community, a member of a listed migratory species, whales and other cetaceans, or a member of a listed marine species.

Commonwealth Land:	2
Commonwealth Heritage Places:	1
Listed Marine Species:	31
Whales and Other Cetaceans:	None
Critical Habitats:	None
Commonwealth Reserves Terrestrial:	None
Australian Marine Parks:	None

Extra Information

This part of the report provides information that may also be relevant to the area you have nominated.

State and Territory Reserves:	1
Regional Forest Agreements:	None
Invasive Species:	43
Nationally Important Wetlands:	1
Key Ecological Features (Marine)	None

Details

Matters of National Environmental Significance

Listed Threatened Ecological Communities [\[Resource Information \]](#)

For threatened ecological communities where the distribution is well known, maps are derived from recovery plans, State vegetation maps, remote sensing imagery and other sources. Where threatened ecological community distributions are less well known, existing vegetation maps and point location data are used to produce indicative distribution maps.

Name	Status	Type of Presence
Banksia Woodlands of the Swan Coastal Plain ecological community	Endangered	Community likely to occur within area

Listed Threatened Species [\[Resource Information \]](#)

Name	Status	Type of Presence
------	--------	------------------

Birds

Anous tenuirostris melanops Australian Lesser Noddy [26000]	Vulnerable	Species or species habitat may occur within area
Botaurus poiciloptilus Australasian Bittern [1001]	Endangered	Species or species habitat known to occur within area
Calidris ferruginea Curlew Sandpiper [856]	Critically Endangered	Species or species habitat likely to occur within area
Calyptorhynchus banksii naso Forest Red-tailed Black-Cockatoo, Karrak [67034]	Vulnerable	Species or species habitat known to occur within area
Calyptorhynchus baudinii Baudin's Cockatoo, Long-billed Black-Cockatoo [769]	Endangered	Species or species habitat likely to occur within area
Calyptorhynchus latirostris Carnaby's Cockatoo, Short-billed Black-Cockatoo [59523]	Endangered	Species or species habitat known to occur within area
Diomedea amsterdamensis Amsterdam Albatross [64405]	Endangered	Species or species habitat may occur within area
Diomedea epomophora Southern Royal Albatross [89221]	Vulnerable	Species or species habitat likely to occur within area
Diomedea exulans Wandering Albatross [89223]	Vulnerable	Species or species habitat likely to occur within area
Diomedea sanfordi Northern Royal Albatross [64456]	Endangered	Species or species habitat likely to occur within area
Leipoa ocellata Malleefowl [934]	Vulnerable	Species or species habitat may occur within

Name	Status	Type of Presence
Macronectes giganteus Southern Giant-Petrel, Southern Giant Petrel [1060]	Endangered	Species or species habitat may occur within area
Macronectes halli Northern Giant Petrel [1061]	Vulnerable	Species or species habitat may occur within area
Numenius madagascariensis Eastern Curlew, Far Eastern Curlew [847]	Critically Endangered	Species or species habitat may occur within area
Pachyptila turtur subantarctica Fairy Prion (southern) [64445]	Vulnerable	Species or species habitat likely to occur within area
Rostratula australis Australian Painted-snipe, Australian Painted Snipe [77037]	Endangered	Species or species habitat likely to occur within area
Thalassarche cauta cauta Shy Albatross, Tasmanian Shy Albatross [82345]	Vulnerable	Species or species habitat may occur within area
Thalassarche cauta steadi White-capped Albatross [82344]	Vulnerable	Species or species habitat likely to occur within area
Thalassarche impavida Campbell Albatross, Campbell Black-browed Albatross [64459]	Vulnerable	Species or species habitat may occur within area
Thalassarche melanophris Black-browed Albatross [66472]	Vulnerable	Species or species habitat may occur within area
Mammals		
Dasyurus geoffroii Chuditch, Western Quoll [330]	Vulnerable	Species or species habitat likely to occur within area
Neophoca cinerea Australian Sea-lion, Australian Sea Lion [22]	Vulnerable	Species or species habitat known to occur within area
Pseudocheirus occidentalis Western Ringtail Possum, Ngwayir, Womp, Woder, Ngoor, Ngoolangit [25911]	Critically Endangered	Species or species habitat may occur within area
Other		
Westralunio carteri Carter's Freshwater Mussel, Freshwater Mussel [86266]	Vulnerable	Species or species habitat may occur within area
Plants		
Andersonia gracilis Slender Andersonia [14470]	Endangered	Species or species habitat known to occur within area
Calytrix breviseta subsp. breviseta Swamp Starflower [23879]	Endangered	Species or species habitat likely to occur within area
Conospermum undulatum Wavy-leaved Smokebush [24435]	Vulnerable	Species or species habitat likely to occur within area
Diuris micrantha Dwarf Bee-orchid [55082]	Vulnerable	Species or species habitat may occur within area

Name	Status	Type of Presence
Diuris purdiei Purdie's Donkey-orchid [12950]	Endangered	Species or species habitat likely to occur within area
Drakaea elastica Glossy-leafed Hammer Orchid, Glossy-leafed Hammer Orchid, Warty Hammer Orchid [16753]	Endangered	Species or species habitat likely to occur within area
Drakaea micrantha Dwarf Hammer-orchid [56755]	Vulnerable	Species or species habitat likely to occur within area
Eleocharis keigheryi Keighery's Eleocharis [64893]	Vulnerable	Species or species habitat may occur within area
Eremophila glabra subsp. chlorella [84927]	Endangered	Species or species habitat known to occur within area
Eucalyptus x balanites Cadda Road Mallee, Cadda Mallee [87816]	Endangered	Species or species habitat may occur within area
Grevillea curviloba subsp. incurva Narrow curved-leaf Grevillea [64909]	Endangered	Species or species habitat may occur within area
Lepidosperma rostratum Beaked Lepidosperma [14152]	Endangered	Species or species habitat likely to occur within area
Macarthuria keigheryi Keighery's Macarthuria [64930]	Endangered	Species or species habitat likely to occur within area
Synaphea sp. Fairbridge Farm (D. Papenfus 696) Selena's Synaphea [82881]	Critically Endangered	Species or species habitat likely to occur within area
Thelymitra dedmaniarum Cinnamon Sun Orchid [65105]	Endangered	Species or species habitat may occur within area
Thelymitra stellata Star Sun-orchid [7060]	Endangered	Species or species habitat may occur within area
Reptiles		
Caretta caretta Loggerhead Turtle [1763]	Endangered	Species or species habitat known to occur within area
Chelonia mydas Green Turtle [1765]	Vulnerable	Species or species habitat known to occur within area
Dermochelys coriacea Leatherback Turtle, Leathery Turtle, Luth [1768]	Endangered	Species or species habitat known to occur within area
Natator depressus Flatback Turtle [59257]	Vulnerable	Species or species habitat known to occur within area

Listed Migratory Species		[Resource Information]
* Species is listed under a different scientific name on the EPBC Act - Threatened Species list.		
Name	Threatened	Type of Presence
Migratory Marine Birds		
Apus pacificus Fork-tailed Swift [678]		Species or species habitat likely to occur

Name	Threatened	Type of Presence
Diomedea amsterdamensis Amsterdam Albatross [64405]	Endangered	within area Species or species habitat may occur within area
Diomedea epomophora Southern Royal Albatross [89221]	Vulnerable	Species or species habitat likely to occur within area
Diomedea exulans Wandering Albatross [89223]	Vulnerable	Species or species habitat likely to occur within area
Diomedea sanfordi Northern Royal Albatross [64456]	Endangered	Species or species habitat likely to occur within area
Macronectes giganteus Southern Giant-Petrel, Southern Giant Petrel [1060]	Endangered	Species or species habitat may occur within area
Macronectes halli Northern Giant Petrel [1061]	Vulnerable	Species or species habitat may occur within area
Thalassarche cauta Tasmanian Shy Albatross [89224]	Vulnerable*	Species or species habitat may occur within area
Thalassarche impavida Campbell Albatross, Campbell Black-browed Albatross [64459]	Vulnerable	Species or species habitat may occur within area
Thalassarche melanophris Black-browed Albatross [66472]	Vulnerable	Species or species habitat may occur within area
Thalassarche steadi White-capped Albatross [64462]	Vulnerable*	Species or species habitat likely to occur within area
Migratory Marine Species		
Caretta caretta Loggerhead Turtle [1763]	Endangered	Species or species habitat known to occur within area
Chelonia mydas Green Turtle [1765]	Vulnerable	Species or species habitat known to occur within area
Dermochelys coriacea Leatherback Turtle, Leathery Turtle, Luth [1768]	Endangered	Species or species habitat known to occur within area
Manta alfredi Reef Manta Ray, Coastal Manta Ray, Inshore Manta Ray, Prince Alfred's Ray, Resident Manta Ray [84994]		Species or species habitat may occur within area
Manta birostris Giant Manta Ray, Chevron Manta Ray, Pacific Manta Ray, Pelagic Manta Ray, Oceanic Manta Ray [84995]		Species or species habitat may occur within area
Natator depressus Flatback Turtle [59257]	Vulnerable	Species or species habitat known to occur within area
Migratory Terrestrial Species		
Motacilla cinerea Grey Wagtail [642]		Species or species habitat may occur within area
Migratory Wetlands Species		

Name	Threatened	Type of Presence
Actitis hypoleucos Common Sandpiper [59309]		Species or species habitat known to occur within area
Calidris acuminata Sharp-tailed Sandpiper [874]		Species or species habitat known to occur within area
Calidris ferruginea Curlew Sandpiper [856]	Critically Endangered	Species or species habitat likely to occur within area
Calidris melanotos Pectoral Sandpiper [858]		Species or species habitat likely to occur within area
Numenius madagascariensis Eastern Curlew, Far Eastern Curlew [847]	Critically Endangered	Species or species habitat may occur within area
Pandion haliaetus Osprey [952]		Breeding known to occur within area
Tringa nebularia Common Greenshank, Greenshank [832]		Species or species habitat likely to occur within area

Other Matters Protected by the EPBC Act

Commonwealth Land [\[Resource Information \]](#)

The Commonwealth area listed below may indicate the presence of Commonwealth land in this vicinity. Due to the unreliability of the data source, all proposals should be checked as to whether it impacts on a Commonwealth area, before making a definitive decision. Contact the State or Territory government land department for further information.

Name
Commonwealth Land - Defence - HOLDFAST BARRACKS

Commonwealth Heritage Places [\[Resource Information \]](#)

Name	State	Status
Historic		
Victoria Park Post Office	WA	Listed place

Listed Marine Species [\[Resource Information \]](#)

* Species is listed under a different scientific name on the EPBC Act - Threatened Species list.

Name	Threatened	Type of Presence
Birds		
Actitis hypoleucos Common Sandpiper [59309]		Species or species habitat known to occur within area
Anous tenuirostris melanops Australian Lesser Noddy [26000]	Vulnerable	Species or species habitat may occur within area
Apus pacificus Fork-tailed Swift [678]		Species or species habitat likely to occur within area
Ardea alba Great Egret, White Egret [59541]		Breeding known to occur within area
Ardea ibis Cattle Egret [59542]		Species or species habitat may occur within area
Calidris acuminata Sharp-tailed Sandpiper [874]		Species or species habitat known to occur within area

Name	Threatened	Type of Presence
Calidris ferruginea Curlew Sandpiper [856]	Critically Endangered	Species or species habitat likely to occur within area
Calidris melanotos Pectoral Sandpiper [858]		Species or species habitat likely to occur within area
Diomedea amsterdamensis Amsterdam Albatross [64405]	Endangered	Species or species habitat may occur within area
Diomedea epomophora Southern Royal Albatross [89221]	Vulnerable	Species or species habitat likely to occur within area
Diomedea exulans Wandering Albatross [89223]	Vulnerable	Species or species habitat likely to occur within area
Diomedea sanfordi Northern Royal Albatross [64456]	Endangered	Species or species habitat likely to occur within area
Haliaeetus leucogaster White-bellied Sea-Eagle [943]		Species or species habitat likely to occur within area
Macronectes giganteus Southern Giant-Petrel, Southern Giant Petrel [1060]	Endangered	Species or species habitat may occur within area
Macronectes halli Northern Giant Petrel [1061]	Vulnerable	Species or species habitat may occur within area
Merops ornatus Rainbow Bee-eater [670]		Species or species habitat may occur within area
Motacilla cinerea Grey Wagtail [642]		Species or species habitat may occur within area
Numenius madagascariensis Eastern Curlew, Far Eastern Curlew [847]	Critically Endangered	Species or species habitat may occur within area
Pachyptila turtur Fairy Prion [1066]		Species or species habitat likely to occur within area
Pandion haliaetus Osprey [952]		Breeding known to occur within area
Rostratula benghalensis (sensu lato) Painted Snipe [889]	Endangered*	Species or species habitat likely to occur within area
Thalassarche cauta Tasmanian Shy Albatross [89224]	Vulnerable*	Species or species habitat may occur within area
Thalassarche impavida Campbell Albatross, Campbell Black-browed Albatross [64459]	Vulnerable	Species or species habitat may occur within area
Thalassarche melanophris Black-browed Albatross [66472]	Vulnerable	Species or species habitat may occur within area
Thalassarche steadi White-capped Albatross [64462]	Vulnerable*	Species or species

Name	Threatened	Type of Presence
Tringa nebularia Common Greenshank, Greenshank [832]		habitat likely to occur within area Species or species habitat likely to occur within area
Mammals		
Neophoca cinerea Australian Sea-lion, Australian Sea Lion [22]	Vulnerable	Species or species habitat known to occur within area
Reptiles		
Caretta caretta Loggerhead Turtle [1763]	Endangered	Species or species habitat known to occur within area
Chelonia mydas Green Turtle [1765]	Vulnerable	Species or species habitat known to occur within area
Dermochelys coriacea Leatherback Turtle, Leathery Turtle, Luth [1768]	Endangered	Species or species habitat known to occur within area
Natator depressus Flatback Turtle [59257]	Vulnerable	Species or species habitat known to occur within area

Extra Information

State and Territory Reserves	[Resource Information]
Name	State
Unnamed WA49363	WA

Invasive Species	[Resource Information]
Weeds reported here are the 20 species of national significance (WoNS), along with other introduced plants that are considered by the States and Territories to pose a particularly significant threat to biodiversity. The following feral animals are reported: Goat, Red Fox, Cat, Rabbit, Pig, Water Buffalo and Cane Toad. Maps from Landscape Health Project, National Land and Water Resources Audit, 2001.	

Name	Status	Type of Presence
Birds		
Acridotheres tristis Common Myna, Indian Myna [387]		Species or species habitat likely to occur within area
Anas platyrhynchos Mallard [974]		Species or species habitat likely to occur within area
Carduelis carduelis European Goldfinch [403]		Species or species habitat likely to occur within area
Columba livia Rock Pigeon, Rock Dove, Domestic Pigeon [803]		Species or species habitat likely to occur within area
Passer domesticus House Sparrow [405]		Species or species

Name	Status	Type of Presence
Passer montanus Eurasian Tree Sparrow [406]		habitat likely to occur within area Species or species habitat likely to occur within area
Streptopelia chinensis Spotted Turtle-Dove [780]		Species or species habitat likely to occur within area
Streptopelia senegalensis Laughing Turtle-dove, Laughing Dove [781]		Species or species habitat likely to occur within area
Sturnus vulgaris Common Starling [389]		Species or species habitat likely to occur within area
Turdus merula Common Blackbird, Eurasian Blackbird [596]		Species or species habitat likely to occur within area
Mammals		
Bos taurus Domestic Cattle [16]		Species or species habitat likely to occur within area
Canis lupus familiaris Domestic Dog [82654]		Species or species habitat likely to occur within area
Felis catus Cat, House Cat, Domestic Cat [19]		Species or species habitat likely to occur within area
Funambulus pennantii Northern Palm Squirrel, Five-striped Palm Squirrel [129]		Species or species habitat likely to occur within area
Mus musculus House Mouse [120]		Species or species habitat likely to occur within area
Oryctolagus cuniculus Rabbit, European Rabbit [128]		Species or species habitat likely to occur within area
Rattus norvegicus Brown Rat, Norway Rat [83]		Species or species habitat likely to occur within area
Rattus rattus Black Rat, Ship Rat [84]		Species or species habitat likely to occur within area
Vulpes vulpes Red Fox, Fox [18]		Species or species habitat likely to occur within area
Plants		
Anredera cordifolia Madeira Vine, Jalap, Lamb's-tail, Mignonette Vine, Anredera, Gulf Madeiravine, Heartleaf Madeiravine, Potato Vine [2643]		Species or species habitat likely to occur within area
Asparagus aethiopicus Asparagus Fern, Ground Asparagus, Basket Fern, Sprengi's Fern, Bushy Asparagus, Emerald Asparagus [62425]		Species or species habitat likely to occur within area
Asparagus asparagoides Bridal Creeper, Bridal Veil Creeper, Smilax, Florist's Smilax, Smilax Asparagus [22473]		Species or species habitat likely to occur within area

Name	Status	Type of Presence
Asparagus declinatus Bridal Veil, Bridal Veil Creeper, Pale Berry Asparagus Fern, Asparagus Fern, South African Creeper [66908]		Species or species habitat likely to occur within area
Asparagus plumosus Climbing Asparagus-fern [48993]		Species or species habitat likely to occur within area
Brachiaria mutica Para Grass [5879]		Species or species habitat may occur within area
Cenchrus ciliaris Buffel-grass, Black Buffel-grass [20213]		Species or species habitat may occur within area
Chrysanthemoides monilifera Bitou Bush, Boneseed [18983]		Species or species habitat may occur within area
Chrysanthemoides monilifera subsp. monilifera Boneseed [16905]		Species or species habitat likely to occur within area
Eichhornia crassipes Water Hyacinth, Water Orchid, Nile Lily [13466]		Species or species habitat likely to occur within area
Genista linifolia Flax-leaved Broom, Mediterranean Broom, Flax Broom [2800]		Species or species habitat likely to occur within area
Genista monspessulana Montpellier Broom, Cape Broom, Canary Broom, Common Broom, French Broom, Soft Broom [20126]		Species or species habitat likely to occur within area
Genista sp. X Genista monspessulana Broom [67538]		Species or species habitat may occur within area
Lantana camara Lantana, Common Lantana, Kamara Lantana, Large-leaf Lantana, Pink Flowered Lantana, Red Flowered Lantana, Red-Flowered Sage, White Sage, Wild Sage [10892]		Species or species habitat likely to occur within area
Lycium ferocissimum African Boxthorn, Boxthorn [19235]		Species or species habitat likely to occur within area
Olea europaea Olive, Common Olive [9160]		Species or species habitat may occur within area
Opuntia spp. Prickly Pears [82753]		Species or species habitat likely to occur within area
Pinus radiata Radiata Pine Monterey Pine, Insignis Pine, Wilding Pine [20780]		Species or species habitat may occur within area
Rubus fruticosus aggregate Blackberry, European Blackberry [68406]		Species or species habitat likely to occur within area
Sagittaria platyphylla Delta Arrowhead, Arrowhead, Slender Arrowhead [68483]		Species or species habitat likely to occur within area
Salix spp. except S.babylonica, S.x calodendron & S.x reichardtii Willows except Weeping Willow, Pussy Willow and Sterile Pussy Willow [68497]		Species or species habitat likely to occur within area

Name	Status	Type of Presence
Salvinia molesta		
Salvinia, Giant Salvinia, Aquarium Watermoss, Kariba Weed [13665]		Species or species habitat likely to occur within area
Tamarix aphylla		
Athel Pine, Athel Tree, Tamarisk, Athel Tamarisk, Athel Tamarix, Desert Tamarisk, Flowering Cypress, Salt Cedar [16018]		Species or species habitat likely to occur within area

Reptiles

Hemidactylus frenatus		
Asian House Gecko [1708]		Species or species habitat likely to occur within area

Nationally Important Wetlands

[Resource Information]

Name	State
Swan-Canning Estuary	WA

Caveat

The information presented in this report has been provided by a range of data sources as acknowledged at the end of the report.

This report is designed to assist in identifying the locations of places which may be relevant in determining obligations under the Environment Protection and Biodiversity Conservation Act 1999. It holds mapped locations of World and National Heritage properties, Wetlands of International and National Importance, Commonwealth and State/Territory reserves, listed threatened, migratory and marine species and listed threatened ecological communities. Mapping of Commonwealth land is not complete at this stage. Maps have been collated from a range of sources at various resolutions.

Not all species listed under the EPBC Act have been mapped (see below) and therefore a report is a general guide only. Where available data supports mapping, the type of presence that can be determined from the data is indicated in general terms. People using this information in making a referral may need to consider the qualifications below and may need to seek and consider other information sources.

For threatened ecological communities where the distribution is well known, maps are derived from recovery plans, State vegetation maps, remote sensing imagery and other sources. Where threatened ecological community distributions are less well known, existing vegetation maps and point location data are used to produce indicative distribution maps.

Threatened, migratory and marine species distributions have been derived through a variety of methods. Where distributions are well known and if time permits, maps are derived using either thematic spatial data (i.e. vegetation, soils, geology, elevation, aspect, terrain, etc) together with point locations and described habitat; or environmental modelling (MAXENT or BIOCLIM habitat modelling) using point locations and environmental data layers.

Where very little information is available for species or large number of maps are required in a short time-frame, maps are derived either from 0.04 or 0.02 decimal degree cells; by an automated process using polygon capture techniques (static two kilometre grid cells, alpha-hull and convex hull); or captured manually or by using topographic features (national park boundaries, islands, etc). In the early stages of the distribution mapping process (1999-early 2000s) distributions were defined by degree blocks, 100K or 250K map sheets to rapidly create distribution maps. More reliable distribution mapping methods are used to update these distributions as time permits.

Only selected species covered by the following provisions of the EPBC Act have been mapped:

- migratory and
- marine

The following species and ecological communities have not been mapped and do not appear in reports produced from this database:

- threatened species listed as extinct or considered as vagrants
- some species and ecological communities that have only recently been listed
- some terrestrial species that overfly the Commonwealth marine area
- migratory species that are very widespread, vagrant, or only occur in small numbers

The following groups have been mapped, but may not cover the complete distribution of the species:

- non-threatened seabirds which have only been mapped for recorded breeding sites
- seals which have only been mapped for breeding sites near the Australian continent

Such breeding sites may be important for the protection of the Commonwealth Marine environment.

Coordinates

-31.976429 115.906857,-31.983709 115.913852,-31.986094 115.915419,-31.990907 115.91823,-31.992727 115.920247,-31.996494 115.925032,-31.998032 115.926984

Acknowledgements

This database has been compiled from a range of data sources. The department acknowledges the following custodians who have contributed valuable data and advice:

- [-Office of Environment and Heritage, New South Wales](#)
- [-Department of Environment and Primary Industries, Victoria](#)
- [-Department of Primary Industries, Parks, Water and Environment, Tasmania](#)
- [-Department of Environment, Water and Natural Resources, South Australia](#)
- [-Department of Land and Resource Management, Northern Territory](#)
- [-Department of Environmental and Heritage Protection, Queensland](#)
- [-Department of Parks and Wildlife, Western Australia](#)
- [-Environment and Planning Directorate, ACT](#)
- [-Birdlife Australia](#)
- [-Australian Bird and Bat Banding Scheme](#)
- [-Australian National Wildlife Collection](#)
- Natural history museums of Australia
- [-Museum Victoria](#)
- [-Australian Museum](#)
- [-South Australian Museum](#)
- [-Queensland Museum](#)
- [-Online Zoological Collections of Australian Museums](#)
- [-Queensland Herbarium](#)
- [-National Herbarium of NSW](#)
- [-Royal Botanic Gardens and National Herbarium of Victoria](#)
- [-Tasmanian Herbarium](#)
- [-State Herbarium of South Australia](#)
- [-Northern Territory Herbarium](#)
- [-Western Australian Herbarium](#)
- [-Australian National Herbarium, Canberra](#)
- [-University of New England](#)
- [-Ocean Biogeographic Information System](#)
- [-Australian Government, Department of Defence](#)
- [Forestry Corporation, NSW](#)
- [-Geoscience Australia](#)
- [-CSIRO](#)
- [-Australian Tropical Herbarium, Cairns](#)
- [-eBird Australia](#)
- [-Australian Government – Australian Antarctic Data Centre](#)
- [-Museum and Art Gallery of the Northern Territory](#)
- [-Australian Government National Environmental Science Program](#)
- [-Australian Institute of Marine Science](#)
- [-Reef Life Survey Australia](#)
- [-American Museum of Natural History](#)
- [-Queen Victoria Museum and Art Gallery, Inveresk, Tasmania](#)
- [-Tasmanian Museum and Art Gallery, Hobart, Tasmania](#)
- Other groups and individuals

The Department is extremely grateful to the many organisations and individuals who provided expert advice and information on numerous draft distributions.

Please feel free to provide feedback via the [Contact Us](#) page.

APPENDIX 3

Conservation Codes

Conservation Codes for Western Australian Flora and Fauna

Specially protected fauna or flora are species* which have been adequately searched for and are deemed to be, in the wild, either rare, at risk of extinction, or otherwise in need of special protection, and have been gazetted as such.

Categories of specially protected fauna and flora are:

T Threatened species – Schedules 1-4

Published as Specially Protected under the *Wildlife Conservation Act 1950*, and listed under Schedules 1 to 4 of the Wildlife Conservation (Specially Protected Fauna) Notice for Threatened Fauna and Wildlife Conservation (Rare Flora) Notice for Threatened Flora (which may also be referred to as Declared Rare Flora).

- **Threatened fauna** is that subset of ‘Specially Protected Fauna’ declared to be ‘likely to become extinct’ pursuant to section 14(4) of the Wildlife Conservation Act.
- **Threatened flora** is flora that has been declared to be ‘likely to become extinct or is rare, or otherwise in need of special protection’, pursuant to section 23F(2) of the Wildlife Conservation Act.

The assessment of the conservation status of these species is based on their national extent and ranked according to their level of threat using IUCN Red List categories and criteria as detailed below.

CR Critically endangered species – Schedule 1

Threatened species considered to be facing an extremely high risk of extinction in the wild. Published as Specially Protected under the *Wildlife Conservation Act 1950*, in Schedule 1 of the Wildlife Conservation (Specially Protected Fauna) Notice for Threatened Fauna and Wildlife Conservation (Rare Flora) Notice for Threatened Flora.

EN Endangered species – Schedule 2

Threatened species considered to be facing a very high risk of extinction in the wild. Published as Specially Protected under the *Wildlife Conservation Act 1950*, in Schedule 2 of the Wildlife Conservation (Specially Protected Fauna) Notice for Threatened Fauna and Wildlife Conservation (Rare Flora) Notice for Threatened Flora.

VU Vulnerable species - Schedule 3

Threatened species considered to be facing a high risk of extinction in the wild. Published as Specially Protected under the *Wildlife Conservation Act 1950*, in Schedule 3 of the Wildlife Conservation (Specially Protected Fauna) Notice for Threatened Fauna and Wildlife Conservation (Rare Flora) Notice for Threatened Flora.

EX Presumed extinct species - Schedule 4

Species which have been adequately searched for and there is no reasonable doubt that the last individual has died. Published as Specially Protected under the *Wildlife Conservation Act 1950*, in Schedule 4 of the Wildlife Conservation (Specially Protected Fauna) Notice for Presumed Extinct Fauna and Wildlife Conservation (Rare Flora) Notice for Presumed Extinct Flora.

IA Migratory birds protected under an international agreement - Schedule 5

Birds that are subject to an agreement between the government of Australia and the governments of Japan (JAMBA), China (CAMBA) and The Republic of Korea (ROKAMBA), and the Bonn Convention, relating to the protection of migratory birds. Published as Specially Protected under the *Wildlife Conservation Act 1950*, in Schedule 5 of the Wildlife Conservation (Specially Protected Fauna) Notice.

CD Conservation dependent fauna - Schedule 6

Fauna of special conservation need being species dependent on ongoing conservation intervention to prevent it becoming eligible for listing as threatened. Published as Specially Protected under the *Wildlife Conservation Act 1950*, in Schedule 6 of the Wildlife Conservation (Specially Protected Fauna) Notice.

OS Other specially protected fauna - Schedule 7

Fauna otherwise in need of special protection to ensure their conservation. Published as Specially Protected under the *Wildlife Conservation Act 1950*, in Schedule 7 of the Wildlife Conservation (Specially Protected Fauna) Notice.

P Priority species

Possibly threatened species that do not meet survey criteria, or are otherwise data deficient, are added to the Priority Fauna or Priority Flora Lists under Priorities 1, 2 or 3. These three categories are ranked in order of priority for survey and evaluation of conservation status so that consideration can be given to their declaration as threatened flora or fauna.

Species that are adequately known, are rare but not threatened, or meet criteria for near threatened, or that have been recently removed from the threatened species or other specially protected fauna lists for other than taxonomic reasons, are placed in Priority 4. These species require regular monitoring.

Assessment of Priority codes is based on the Western Australian distribution of the species, unless the distribution in WA is part of a contiguous population extending into adjacent States, as defined by the known spread of locations.

1 Priority 1: Poorly-known species

Species that are known from one or a few locations (generally five or less) which are potentially at risk. All occurrences are either: very small; or on lands not managed for conservation, e.g. agricultural or pastoral lands, urban areas, road and rail reserves, gravel reserves and active mineral leases; or otherwise under threat of habitat destruction or degradation. Species may be included if they are comparatively well known from one or more locations but do not meet adequacy of survey requirements and appear to be under immediate threat from known threatening processes. Such species are in urgent need of further survey.

2 Priority 2: Poorly-known species

Species that are known from one or a few locations (generally five or less), some of which are on lands managed primarily for nature conservation, e.g. national parks, conservation parks, nature reserves and other lands with secure tenure being managed for conservation. Species may be included if they are comparatively well known from one or more locations but do not meet adequacy of survey requirements and appear to be under threat from known threatening processes. Such species are in urgent need of further survey.

3 Priority 3: Poorly-known species

Species that are known from several locations, and the species does not appear to be under imminent threat, or from few but widespread locations with either large population size or significant remaining areas of apparently suitable habitat, much of it not under imminent threat. Species may be included if they are comparatively well known from several locations but do not meet adequacy of survey requirements and known threatening processes exist that could affect them. Such species are in need of further survey.

4 Priority 4: Rare, Near Threatened and other species in need of monitoring

(a) Rare: Species that are considered to have been adequately surveyed, or for which sufficient knowledge is available, and that are considered not currently threatened or in need of special protection, but could be if present circumstances change. These species are usually represented on conservation lands.

(b) Near Threatened: Species that are considered to have been adequately surveyed and that are close to qualifying for Vulnerable, but are not listed as Conservation Dependent.

(c) Species that have been removed from the list of threatened species during the past five years for reasons other than taxonomy.

*Species includes all taxa (plural of taxon - a classificatory group of any taxonomic rank, e.g. a family, genus, species or any infraspecific category i.e. subspecies or variety, or a distinct population).

A list of the current rankings can be downloaded from the Parks and Wildlife Threatened Species and Communities webpage at <http://www.dpaw.wa.gov.au/plants-and-animals/threatened-species-and-communities>

Commonwealth of Australia Conservation Codes

Threatened fauna and flora may be listed under Section 178 of the *Environment Protection and Biodiversity Conservation Act 1999* (EPBC Act) in any one of the following six categories:

Extinct

A native species is eligible to be included in the extinct category at a particular time if, at that time, there is no reasonable doubt that the last member of the species has died.

Extinct in the wild

A native species is eligible to be included in the extinct in the wild category at a particular time if, at that time:

- a) it is known only to survive in cultivation, in captivity or as a naturalised population well outside its past range; or
- b) it has not been recorded in its known and/or expected habitat, at appropriate seasons, anywhere in its past range, despite exhaustive surveys over a time frame appropriate to its life cycle and form.

Critically endangered

A taxon is Critically Endangered when the best available evidence indicates that it meets any of the five criteria for the category identified in Part 7.01 of the EPBC Regulations, and it is therefore considered to be facing an extremely high risk of extinction in the wild.

Endangered

A taxon is Endangered when the best available evidence indicates that it meets any of the five criteria for the category identified in Part 7.01 of the EPBC Regulations, and it is therefore considered to be facing a very high risk of extinction in the wild.

Vulnerable

A taxon is Vulnerable when the best available evidence indicates that it meets any of the five criteria for the category identified in Part 7.01 of the EPBC Regulations, and it is therefore considered to be facing a high risk of extinction in the wild.

Conservation dependent

A native species is eligible to be included in the conservation dependent category at a particular time if, at that time:

- a) the species is the focus of a specific conservation program the cessation of which would result in the species becoming vulnerable, endangered or critically endangered; or
- b) the following subparagraphs are satisfied:
 - i. the species is a species of fish;

- ii. the species is the focus of a plan of management that provides for management actions necessary to stop the decline of, and support the recovery of, the species so that its chances of long term survival in nature are maximised;
- iii. the plan of management is in force under a law of the Commonwealth or of a State or Territory;
- iv. cessation of the plan of management would adversely affect the conservation status of the species.

The EPBC Act does not provide for listing in a data deficient category. Where sufficient data (evidence) is unavailable to allow assessment by the Threatened Species Scientific Committee against the criteria for listing, the species are found to be ineligible. A recommendation is made to the Minister to not include the species in any category under the EPBC Act. For reasons of transparency and to inform future research, the Threatened Species Scientific Committee publishes the names of those species found to be data deficient. As data deficient is not a listing category under the EPBC Act, this has no statutory implications and the species is not considered to be listed under the EPBC Act.

APPENDIX 4

Field Data

Location 1 Geraldton Wax and Woolly Bush in rail reserve



Location 2 Jarrah and Marri in rail reserve



Location 3 *Xanthorrhoea preissii*, WA Peppermint and Geraldton Wax in rail reserve



Location 4 Olive and *Melaleuca quinquenervia* in road reserve



Location 5 Norfolk Island Pine, WA Peppermint and Bottlebrush in road reserve (photo taken from pedestrian crossing)



Location 6 WA Peppermint and *Xanthorrhoea preissii* in rail reserve



Location 7 River Red Gum and Moonah Paperbark on Cohn Street



Location 9 Kurrajong in road reserve



Location 12 WA Peppermint in rail reserve, Red Flowering Gum in road reserve



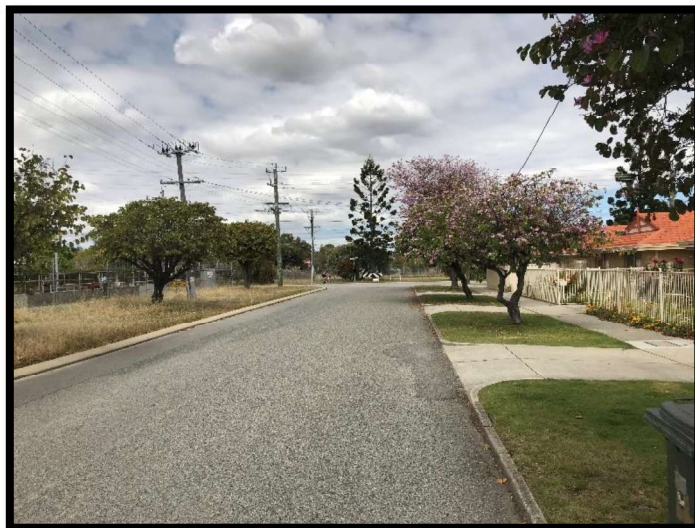
Location 13 WA Peppermint and Geraldton Wax in rail reserve, Bottlebrush in road reserve



Location 15 Norfolk Island Pine, *Melaleuca quinquenervia* and Bottlebrush in road reserve



Location 16 *Bauhinia* in Lion Street verge



Location 17 Geraldton Wax, WA Peppermint and Victorian Teatree in rail reserve



Location 18 *Melaleuca quinquenervia* in carpark verge

